

LIFE
CHALLENGE
LJUBLJANA



Life Challenge History

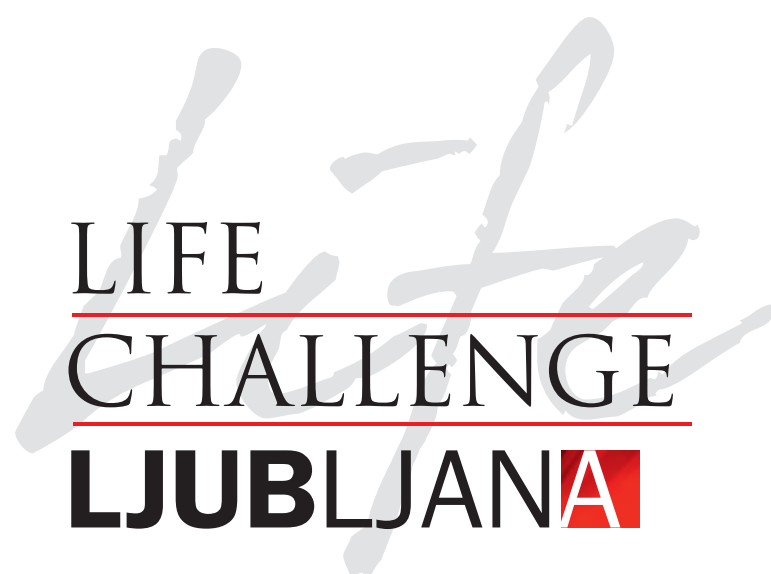
Despite the first Baunit Life Challenge officially taking place in Vienna on 12 June 2014, the Life Challenge journey began years prior, with a vision: "We want all people to live in healthy, energy-efficient, and beautiful homes for a sustainable future." Baunit Czech Republic initiated a national competition in 2000 called *Fasada roku* – Facade of the Year. This event selected the most beautiful facade created using products from the Baunit range. The success of this event led other Baunit countries such as Slovakia, Hungary, Poland, Romania, Bulgaria, and Ukraine to follow suit.

The release of the Baunit Life color system in 2012 significantly expanded design possibilities with 888 different colors, making it Europe's largest facade color range. In 2013, Baunit developed Baunit CreativTop, a free modeling putty offering almost complete texture freedom. Combined with the Baunit Life color system, designers could create something truly special. 'Shades of White', a palette of 12 different white shades for purist looks, became available in 2021. Additionally, in 2022, the Life Color System was extended by 180 moody color tones, totaling over 1000 facade colors to choose from.

With this in mind, Baunit elevated national competitions into a transnational event in 2014, launching the Baunit Life Challenge – The European Facade of the Year. It remains connected to the original vision of ensuring people live in aesthetically pleasing, energy-efficient homes.

List of Winners:

- Life Challenge Award 2022:
Cukrarna Gallery
Scapelab d.o.o., SLOVENIA
- Life Challenge Award 2020/21:
Mo Museum
Daniel Libeskind, Studio Libeskind,
Do Architects, LITHUANIA
- Life Challenge Award 2018:
Collective Housing and Health Centre
peris+toral.arquitectes; Bonell i Gil, SPAIN
- Life Challenge Award 2016:
Kindergarten Limbach
Architekti.sk, Ing. arch. Martin Rezník, Ing.
arch. Matúš Polák, Ing. arch. Juraj Makový,
SLOVAKIA
- Life Challenge Award 2014:
Vallecas 47
Untercio, SPAIN



LIFE
CHALLENGE
LJUBLJANA

LIFE
CHALLENGE
LJUBLJANA

*Architecture is a visual art, and
the buildings speak for themselves.*
(Julia Morgan)

Explore the Architecture of Baumit Life Challenge 2024

Dear Baumit partners and friends,

I am proud to present to you today the sixth anniversary edition of our Baumit Life Challenge book. Ten years ago, Europe's most beautiful façades were chosen for the first time at a festive awards ceremony in Vienna. The success went into series and the Baumit Life Challenge developed into a biennial event and source of inspiration for future extraordinary façades.

Around 500 participants from all European Baumit member countries once again impressed the audience and jury with their architectural excellence. With over 300 projects from all over Europe, they proved another time that the dynamic interplay of materials, textures, shapes, colors and rediscovered processing techniques holds the potential for unprecedented innovative design.

It was an extraordinary pleasure to welcome the winners of the Baumit Life Challenge 2024 to Ljubljana and to congratulate them personally on their architectural masterpieces. The choice of Slovenia's capital city as the venue for this year's Life Challenge has a worthy reason. It is home to last year's winner and a great example of a successful redevelopment project: Ljubljana's new cultural centre, the Cukrarna Gallery.

In the following six chapters, discover architectural highlights that have been realized not only with Baumit products, but also in the company of experienced Baumit teams. Because even the best ideas only have a future if they are built together.

I hope you enjoy reading and marvel!



Mag. Robert Schmid
CEO Baumit Group



Baumit Life Challenge Winners

What began as an idea in Vienna in 2014 has evolved into a premier façade contest across Europe. Over the past decade, this competition has served as a beacon of architectural innovation, showcasing outstanding designs crowned by our Life Challenge winners from Spain, Slovakia, Lithuania, and Slovenia. As we celebrate the 10-year anniversary, we reflect on the journey that has solidified the Baumit Life Challenge as a cornerstone of architectural excellence, fueled by the versatility and quality of Baumit materials.



VALLECAS 47

SPAIN

Architect:

Estudio Utercio



KINDERGARTEN LIMBACH

SLOVAKIA

Architect:

Architekti.sk

Ing. arch. Martin Rezník

Ing. arch. Matúš Polák

Ing. arch. Juraj Makový



PARIS+LIFE CHALLENGE
WINNER
2018



**COLLECTIVE HOUSING AND
HEALTH CENTRE**

SPAIN

Architect:
peris+toral.arquitectes
Bonell i Gil



PARIS+LIFE CHALLENGE
WINNER
2020



MO MUSEUM

LITHUANIA

Architect:
Daniel Libeskind
Studio Libeskind
Do Architects



PARIS+LIFE CHALLENGE
WINNER
2022



CUKRARNA GALLERY

SLOVENIA

Architect:
Scapelab d.o.o.

Jury Members



Lenka Kavčič
Slovenia

Head of Life Challenge Jury 2024

Lenka Kavčič is an architect, mentor, lecturer and advocate of quality architecture. She specialises in innovative approaches to spatial interventions and advocates a higher dwelling culture. She founded the aFRONT Institute, the organiser of Open House Slovenia (OHS). For the past ten years, OHS has been the biggest architectural festival in Slovenia, featuring the most important online guide to contemporary Slovenian architecture. OHS Festival is the recipient of the highest architectural award in the country – the Plečnik Medal.

Lenka Kavčič was also awarded the same prize for the Playful Architecture project of introducing architecture to children, and the gold medal of the BIO 16 – Biennial of Industrial Design. Her mission is to achieve a higher level of spatial culture and architectural standards, as she firmly believes that space should be dedicated to people and that only through collaboration can we preserve and create better spaces for our future.



Cukrarna Gallery
Architect: Scapelab d.o.o.

Explore the story of the LC Winner 2022 here:





Kurtul Erkmen
Türkiye

Kurtul Erkmen, born in Istanbul, began his architectural journey at Istanbul Academy of Fine Arts in 1978. He co-founded TE Construction Ltd. in 1980 and KG Architecture in 1990. He expanded internationally with KGRÖM in Romania since 1999 and ErmasKG in Kazakhstan since 2007. Erkmen is actively involved in architectural competitions, serving as a jury member and speaker. He lectured at Mimar Sinan Fine Arts University and currently teaches at the same institution. He's the founding Chairman of Aura Istanbul and a Board Member of Istanbul Chamber of Free Architects, contributing significantly to architectural education and practice in Turkey.



Igor Grozdanic
Bosnia and Herzegovina

Igor Grozdanic, an architect with 36 years of experience, specializes in urban planning and architectural design, having worked on multifunctional facilities globally. He began his career at DOM SPI in Sarajevo, winning prizes in competitions. After leaving due to war in 1992, he worked for Studio Rondina in Italy and HENN Architects in Munich until 1998. In 1999, he co-founded Studio nonstop in Sarajevo with Sanja Galic, shaping the city's skyline with complex projects and winning multiple awards. He served on urban advisory bodies from 2002 to 2010. Presently, he serves as managing director at Studio nonstop.



Alexander Gutzmer
Germany

Dr. Alexander Gutzmer, architecture and city planning expert, served as editor-in-chief of Baumeister magazine for 10 years and oversaw titles like Topos at Callwey publishing. Now, he's the research & communication director at ehret+klein. He's also a professor at Quadriga University, Berlin, and has lectured at Humboldt University and Tecnológico de Monterrey. Gutzmer contributes to newspapers like Frankfurter Allgemeine Zeitung, Neue Zürcher Zeitung, and Welt am Sonntag, and he's authored books including "TV Shows and Nonplace" (Routledge) and "Grenze aller Grenzen" (Kursbuch Edition).



Roger Kostarczyk
Poland

Roger Kostarczyk, a graduate of Gdańsk Technical University, leads the family-owned firm AKO ARCHITEKCI since 2015. He spearheaded the transition to BIM design in 2017. His firm specializes in hospitality design and projects within historical contexts or under preservation. Kostarczyk's designs prioritize contextual architecture, enriching the project's surroundings through deep analysis. His portfolio spans Poland, London, Dublin, and Bergen, showcasing his commitment to integrating projects harmoniously into their environments.



Bogdan-Constantin Neagu
Romania

Bogdan-Constantin Neagu, born in 1974, founded NBC ARCHITECT in 2003 after graduating from "Ion Mincu" University of Architecture and Urbanism. His firm has been recognized among Romania's top 50 architects by various institutions. Over 20 years, their projects have excelled in numerous architecture competitions, earning awards such as 1st place for the Memorial to Heroes of the Nation in Carol Park and the Golden Tulip Mamaia Conference Center. Neagu's achievements include finalist positions in international competitions like the ThyssenKrupp Elevator Architecture Award Istanbul. Notable recognitions include 1st prizes at the Bucharest Architecture Biennale and Romanian Building Awards, and special awards at events like the Bucharest Architecture Annual and BIG SEE Architecture Festival. In 2022, his landscape design for "Lacul Morii" park secured 2nd place.



Samuel Netočný
Slovakia

Samuel Netočný's architectural journey through Brno, Brighton, and Vienna encompasses technical expertise, conceptual thinking, and socio-political context. With a focus on localism and vernacular architecture under KKKD, he emphasizes pragmatic-romantic views, functional principles, and aesthetic sensitivity. His approach values individual client engagement and site integration, aiming for architecture that harmonizes with its surroundings. Netočný's philosophy centers on quality without overshadowing the natural landscape, advocating for purposeful construction and humble integration.



Paul Preiss
Austria

Paul Preiss studied architecture at the Vienna University of Technology with a particular passion for residential construction. In 2004, he founded the architectural office g.o.y.a. in Vienna together with his two partners Roman Drbusek and Christoph Janauschek. Influenced by the local demand for innovative solutions in subsidized housing and educational construction and the experience gained over the years, many exciting projects have been designed and implemented. He has been able to pass on this knowledge to students in lectures, for example at the Technical University or the University of Applied Arts Vienna. Both participating in and acting as a juror for various competitions has become a beloved task over the years.



Guillermo Reynés
Vázquez-Rovira
Spain

Guillermo Reynés, architect and founder of GRAS-Reynés Arquitectos, graduated from the University of Navarra and honed his skills at esteemed studios like Carlos Ferrater in Barcelona and MVRDV in Rotterdam. His firm, mainly active in Spain but expanding globally, gained recognition with wins in international competitions like the Ecocity in Montecorvo. They showcased their work at prestigious events like the Venice Biennale and Reynés himself earned acclaim, including the 40 UNDER 40 Europe Design Award in 2018. He also shares his expertise as a lecturer at institutions worldwide, contributing to architectural education and discourse.



Single Family House

Connemara II House
Architect: Peter Legge Associates



Bruno Rechner
Croatia

Bruno Rechner is working as the main architect at Rechner d.o.o., the company was founded by Predrag Rechner in 1991. Their main field of work is architectural design, consulting, engineering and design. Their projects have been exhibited and presented to domestic and international exhibitions and magazines, which were awarded fifteen times on various architectural awards and events all over the world. From Singapore, Slovenia, USA, Turkey, Italy and Spain to India. Numerous students and architects visit the company's realizations for professional training and the study of contemporary architecture.



Radomir Tankov Serafimov
Bulgaria

Radomir Tankov Serafimov, born in 1973 in Sofia, graduated with honors in 1997 from the Department of "Public Buildings" at the University of Architecture, Civil Engineering, and Geodesy, Sofia. Since 1998, he has been the chief designer and manager at "Atelier Serafimov Architects" Ltd. A member of the Union of Architects and the Chamber of Architects in Bulgaria, he's driven the firm's growth, making it a leading design company. Serafimov implements project management systems, actively participating in designs. His involvement in national and international competitions has garnered numerous awards, including 18 "Building of the Year" accolades for projects spanning hospitals, office complexes, and more.



Jan Jakub Tesař
Czech Republic

A generation younger, office partner Stempel Tesař Architects, had the opportunity to experience top architecture in the Netherlands while studying at the prestigious University of Delft and a job internship at Jeanne Dekker's renowned architecture office. During his graduation from the Faculty of Architecture in Prague, he was approached by his professor and the head of his diploma project, Jan Stempel, for cooperation. And here begins the history of the Stempel & Tesař.



Zoltan Peter Molnar, a certified architect from Budapest University of Technology, emphasizes the fusion of engineering and design in architecture. With 30 years in the field, including 15 in design, 12 in consulting, and 3 as an expert reviewer, he prioritizes meticulous planning and material understanding for optimal results. Inspired by his mentor, he advocates for building upon past achievements for innovation and lasting value. In 2020, he was commended by the Minister of Innovation and Technology for his contributions to the domestic construction industry.

Zoltan Peter Molnar
Hungary



Thermal Renovation

Volkach Comprehensive School
Architect: Architekturbüro Jäcklein

*Architecture is about experience:
not only visual but also what you can
touch, what you can feel.*

(Ma Yansong)



VINO.TAKE



Architect: DI Boder Ziviltechnik

Investor: Wolfgang Kowald

Applicator: Heinrich Bau GmbH, Marcut Dumitru Putze GmbH,
Tschandl Farben und Malerei

Location: Bad Loipersdorf, Austria

Located in vineyards in Southeast Styria »VINO.TAKE« resembles a sculpture in harmony with the colours of the surrounding landscape.

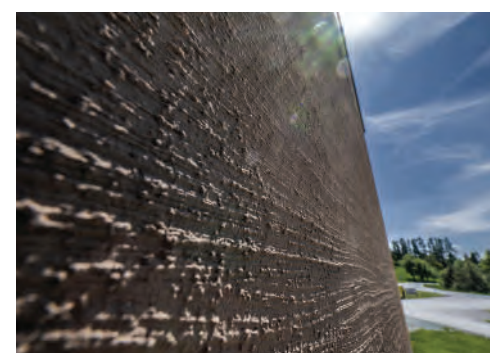
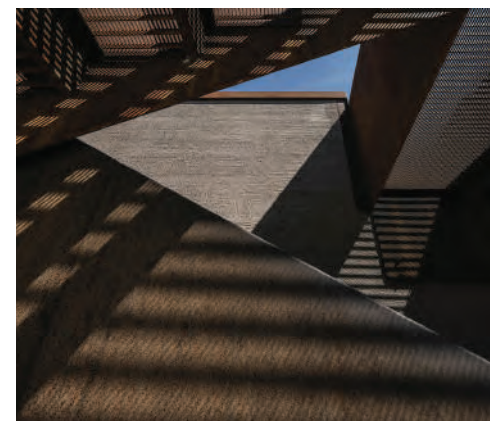
Earthy colour tones all over – from plaster to steel to concrete. The vineyard offers an elegant and modern scenery indoor as well as on the spectacular panoramic terrace.



Baumit Insulation System: Baumit
StarSystem Mineral

Baumit Materials: CreativTop, MultiWhite

Life Colors: 0383



Rebirth of the modernist House



Architect: Zsuffa és Kalmár Építész Műterem Kft. –

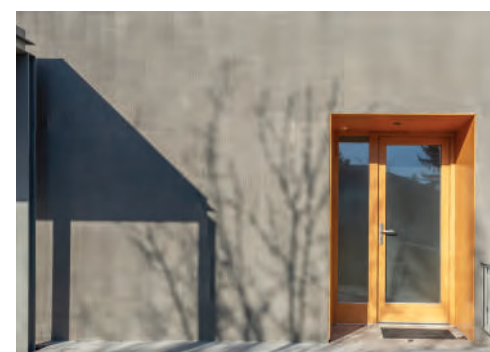
Kalmár László, Rose Balázs, Zsuffa Zsolt

Investor: Private

Constructor: Zsolt HALMÁGYI

Location: Máriaremete, Hungary

A residential house built in 1974 has been renovated, respecting its modernist massing and details. A new element is the covering of the terrace. The building received 20 cm of insulation, the plaster was made with Baumit CreativTop, using a comb technique, evoking the previous, unfinished plaster structure.



Baumit Materials: CreativTop

Life Colors: 0914

MZWIK w Sulejówku



Architect: DA Dziuba Architekci

Investor: Miejski Zakład Wodociągów i Kanalizacji w Sulejówku

Constructor: E.W.Rental

Location: Sulejówek, Poland

The modern shape of the MZWIK office building in Sulejówek was made using the highest quality Baumit products. Baumit CreativTop modeled plaster was used on the façade, which created the effect of concrete.



Baumit Insulation System:

Baumit ProSystem

Baumit Materials: SilikatTop, CreativTop, SilikonColor, Lasur, DuoContact, NivoFix



Riverside VI



Architect: Kančo studija, Architektas: G. Kančaitė

Investor: UAB Darnu Group

Constructor: UAB Naresta

Location: Vilnius, Lithuania

Riverside IV in Lithuania boasts a façade that seamlessly blends historical charm with contemporary design, echoing the ethos of its architect, G. Kančaitė.



Baumit Insulation System:

Baumit ProSystem

Baumit Materials: Metallic, Lasur, CreativTop

Pod Pekrsko gorco



Architect: Jereb in Budja arhitekti d.o.o., Arhitekti Dobrin d.o.o., Kostak GIP d.o.o.

Investor: Housing Fund of Republic of Slovenia

Applicator: Mogg projekti d.o.o.

Location: Maribor, Slovenia

The main idea behind the project is to create a sense of an integrated, multi-layered small town. The building volumes have been designed in a restrained manner and serve as frameworks for varied green atriums. Vehicle traffic is limited, which creates the possibility of a high-quality green and safe environment outside one's front door.



Baumit Insulation System:

Baumit StarSystem EPS

Baumit Materials: CreativTop,
StarContact Light White



Photos: Blaž Budja, Miran Kambič

Business Center Osijek



Architect: Mislav Salitrežić - Sirrah projekt d.o.o.

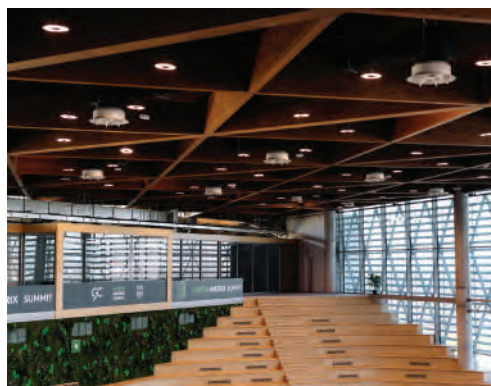
Investor: Osječko-baranjska županija, Grad Osijek, Europska unija

Constructor: PROJEKTGRADNJA plus d.o.o.

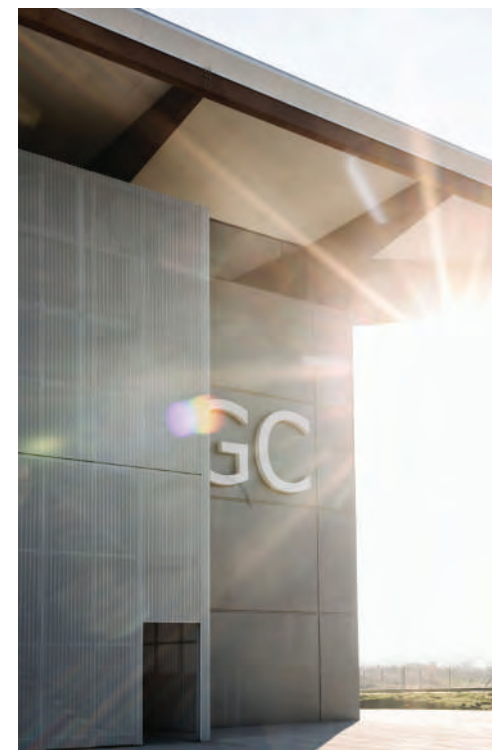
Applicator: PROJEKTGRADNJA plus d.o.o.

Location: Osijek, Croatia

The new exhibition building, spanning 5,000 m², embodies multifunctional design and sustainability, with almost zero energy consumption. Its impressive façade, adorned with Baumit CreativTop Silk and Metallic coating, adds to its unique appearance. With exhibition spaces, multifunctional halls, and offices, it fosters economic growth in Osijek-Baranja County.



Baumit Materials:
CreativTop, Metallic



Photos: Tomislav Marcijuš

Student House Holešovice



Architect: Pavel Hnilička
Architects + Planners, s.r.o.

Investor: Karlín Group
Management a.s.

Constructor: Metrostav
a.s.

Applicator: B A CH, spol.
s r.o.

Location: Czech Republic

The Student House Holešovice project consciously follows the large urban format of buildings with a fixed street line typical for this part of Prague. The uniquely designed façades of the building use creative techniques with an open ground floor to create a welcoming street space and, together with the newly widened sidewalk and tree line, add new energy to a previously neglected area. This is the first time that the stencil spraying technique has been used.

Baumit Insulation System: Baumit
StarSystem Mineral

Baumit Materials: CreativTop, StarTop,
SilikonTop, StarColor, StarContact,
ProContact

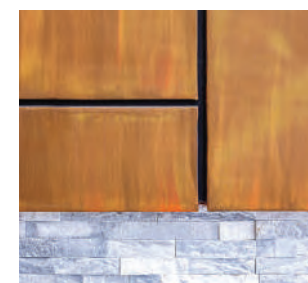
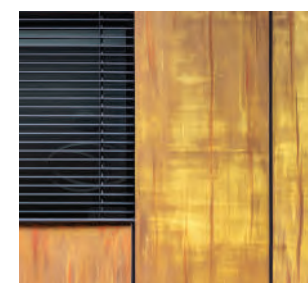
Life Colors: 0017 0164 0135

Family House Katka



Architect: "POLAK ATELIER s. r. o.,
Bardejov, Komenského 569/45 Marek
Polák, POLAK ATE
Constructor: MARKO a MARKO s.r.o.,
Bardejov, Priemyselná 4271
Location: Bardejovské Kúpele, Slovakia

The articulated façade of the house accentuates its uniqueness within the development. The Corten gloss of the façade amplifies this effect. The concept of "enclosing" the property boundaries without fencing has facilitated a smooth transition between public and private spaces. The owner's courage and the architect's creativity have collectively birthed an original structure in the middle of Bardejov Spa.



Baumit insulation
System: Baumit
ProSystem EPS
Baumit Materials:
CreativTop, StarTop,
Lasur, Metallic

Life Colors: 0019

Rhouse2



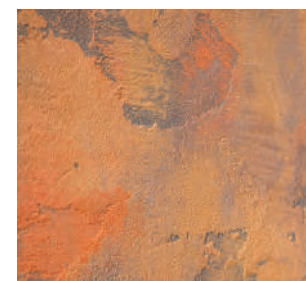
Architect: Šercel Švec, s.r.o., Bratislava
Location: Nitra - Lužianky, Slovakia

The compact monochromatic envelope of the house unifies the trio of operating blocks and hides a varied internal structure. An important part of the concept is the connection between living and the outdoors through extensive glazed areas and a covered terrace. The material solution highlights the straight lines, rhythm and gradation of the architecture.

Baumit insulation
System: Baumit
StarSystem Mineral
Baumit Materials:
SilikonTop, CreativTop

Life Colors: 0019

House in a Picture Frame



Architect: Martin Filina, Arch Konstrukt s.r.o., Trenčín

Constructor: Daniel Horňák, Recobuild s.r.o., Trenčín

Location: Trenčín, Slovakia

The house is an inspiring example of the symbiosis of house and garden. The chamfered edges on the front façade of the house create a symbolic picture frame emphasising the entrance. Its white surface is contrasted with the use of imitation corten. This element of the façade is also supported by the use of raw sheet metal in the sophisticated architecture of the garden.

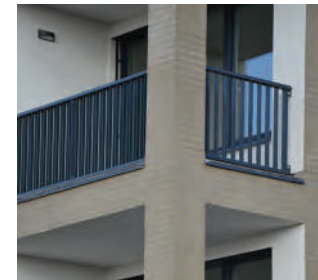
Baumit insulation

System: Baumit StarSystem Mineral

Baumit Materials: SilikonTop, CreativTop, Lasur, Metallic

Life Colors: 0019

Multifamily House Drnovská



Architect: Ing. arch.
Jaroslav Kačer

Investor:
FINEP spol. s r.o.

Constructor: VCES a.s.

Location: Czech Republic

The project seamlessly integrates the comfort of contemporary urban living with a feeling of liberation and an extensive array of amenities. The façade features imitation brick cladding crafted from Baumit CreativTop plaster, with varying shades of tiles adorning each building. The uniformity of the façades is disrupted by the sleek window jambs, which alternate in size and shape.

Baumit Insulation System: Baumit
StarSystem Mineral

Baumit Materials: CreativTop, ProContact

Life Colors: 0182 0913

Residential Complex LAGO I and II



Architect: Andrej Rodziňák,
ar.chitect s.r.o., Košice

Constructor: Chemkostav Michalovce,
Inžinierske stavby Košice,
DAR KOM Košice

Location: Košice, Slovakia

The residential complex consists of two terraced apartment buildings situated in the outskirts of the Nad Jazero housing estate. The seven-storey buildings have a total of 100 residential units and two multifunctional spaces on the 1st floor. The flats impress with their above-standard size, while each flat has a practical storage space.

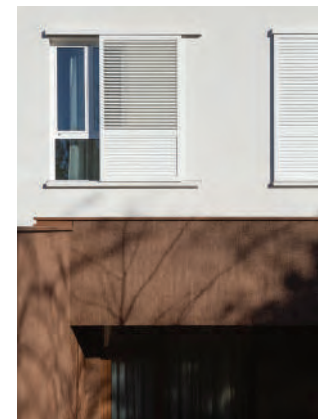
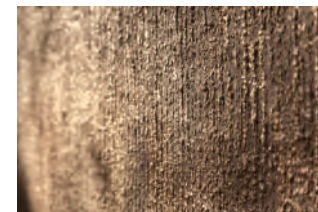
Baumit insulation

System: Baumit
ProSystem Mineral

Baumit Materials:
SilikonTop, CreativTop

Life Colors: 0402

Senior Care Residence Labin



Photos: K O R I D O R 2 7 Interior / architecture photography

Architect: Arhitektonski ured
Čikeš-Čuzela

Investor: Grad Labin

Constructor: De Conte d.o.o.

Applicator: De Conte d.o.o.

Location: Labin, Croatia

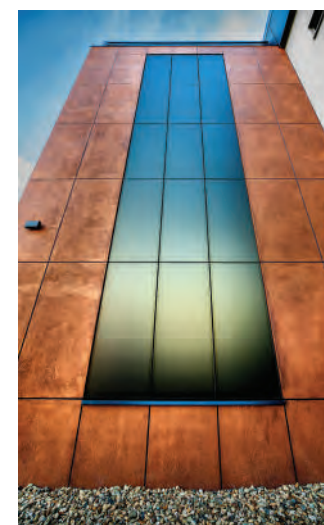
In Labin, the Senior Care Residence offers a secure and homely space for elderly residents. Constructed with high-quality Baumit materials, its façade features innovative techniques with Baumit CreativTop, enhancing both aesthetics and longevity.

Baumit insulation System: Baumit
ProSystem Mineral

Baumit Materials: CreativTop, StarColor,
PuraColor, Metallic, ProContact

Life Colors: 0431 0019

Multifamily house in Holešovičky



Architect: Ing. arch. Michal Vondra
Investor: Petr Silovský
Constructor: PROREDO s.r.o.
Location: Czech Republic

Two types of finishes were applied to the façade of the apartment building. The first creative technique is a smooth concrete, the second technique is an imitation rusted metal. The design of the façade articulation of the imitation rusted metal was based on the dimensions of the solar panels installed on the façade.

Baumit insulation System: Baumit ProSystem EPS
Baumit Materials: CreativTop, Lasur, Metallic, ProContact

Life Colors: 0562 0933

HD House



Photos: Mihail Novakov

Architect: arch. Ivan Moev, "Top Arch"

Investor: Inpro Group

Applicator: DP Construction

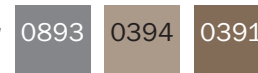
Location: Sofia, Bulgaria

The object is filled with Baumit ETICS Pro with final coating NanoporTop K1.5 in colors 0019, 0893, and CreativTop 1.0 in color 0394. The exterior paint used is Lazur in color 0391.

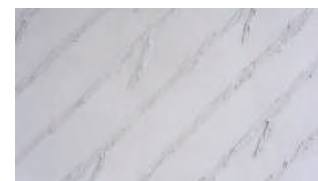
Baumit insulation System: Baumit ProSystem

Baumit Materials: NanoporTop, CreativTop, Lasur, ProContact

Life Colors:



Koru Dalyan Villas



Architect: Arda Işık
Investor: YAPI ST GAYRIMENKUL
 YATIRIM A.Ş
Constructor: YAPI ST GAYRIMENKUL
 YATIRIM A.Ş
Applicator: Yapı SD - Mehmet Salih Demir
Location: İzmir, Türkiye

Dalyan Project comprises 4 villas with varied models. The upper floor is shifted sideways to create a gallery space for the entrance and a shaded terrace by the pool. The building's envelope features a pattern using Baumit stucco/paint layers, enhancing spatial composition.

Baumit Materials:
 CreativTop

Life Colors: 0906

CINEMA BCK



Architect: J.Projekt -
Pracownia Architektury,
Jagoda Matuszczak
Investor: Urząd Miasta i
Gminy Białobrzegi
Constructor: Archibud
Małgorzata Pluta, Radom
Location: Białobrzegi,
Poland

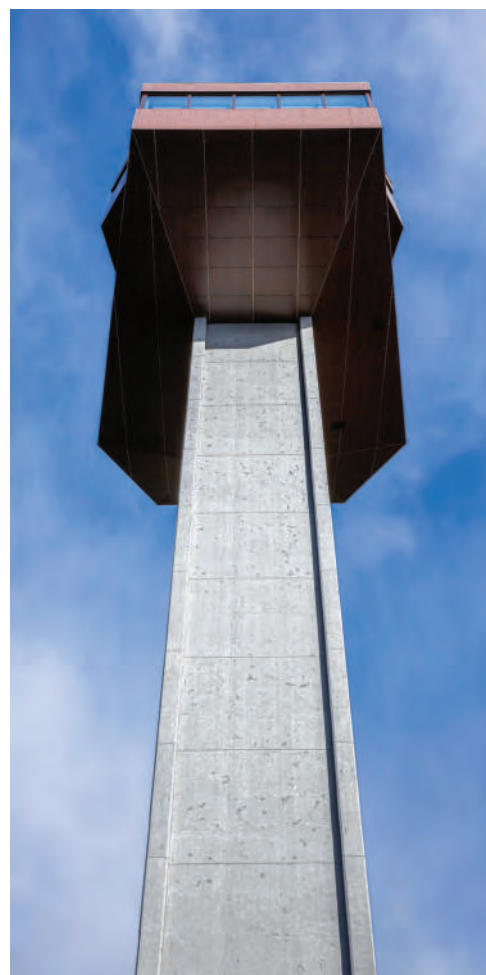
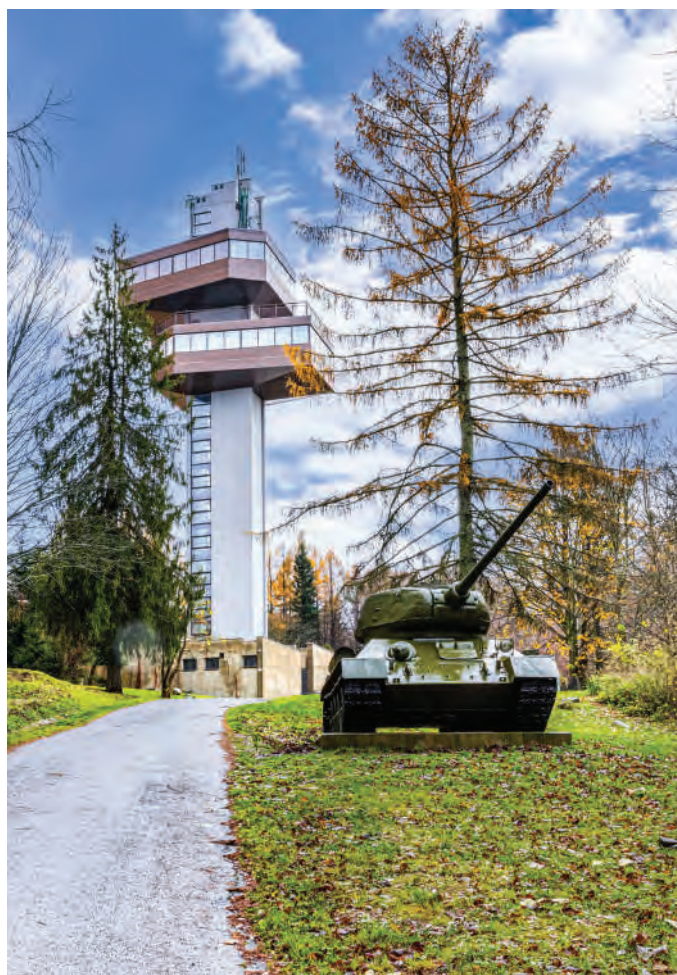
The project expanded the Municipal Cultural Center in Białobrzegi with a conference area including an auditorium and a reading room. Emphasis was placed on creating an open building integrated with the surroundings and a clear communication system. External development connected the square with the building's interior, enhancing dynamics.

Baumit insulation System: Baumit
ProSystem

Baumit Materials: SilikonTop, CreativTop,
ProContact, NivoFix

Life Colors: 0917 0915

Lookout Tower in Dukla - II



Architect: "Slávka Miškuřová, KApAR, s.r.o., Prešov KApAR, s.r.o., Prešov, Budovateľská

Constructor: Ľuboš Kost, H.K.K.mont, s.r.o., Svidník

Location: Vyšný Komárnik 49, Slovakia

The reconstruction of the observation tower was necessitated by the weather-induced degradation of its concrete structure. The design of the new façade of the tower respected its location in the protection zone "Dukla Battlefield" and therefore the construction modifications took into account the original architecture of the building from 1974.

Baumit Materials:
CreativTop

Life Colors: 0925

Koliba Gardens



Architect: ALEXY & ALEXY s.r.o.,
Bratislava

Investor: púpava development, s.r.o.

Constructor: BELSTAV SK, s.r.o.

Location: Bratislava, Slovakia

The complex consists of ten houses, each creating a separate living space. The architects were looking for a concept that would fully connect the interior with the garden, while evoking a feeling of maximum privacy. The intimacy is emphasised by a private path across the site, which is below the level of the main living floor.

Baumit insulation System:

Baumit openSystem

Baumit Materials: SilikonTop, CreativTop

Life Colors: 0926 0015 0922

The School's New Wing



Architect: A+ Építész Stúdió Kft. – Anna Mária TAMÁS DLA, Krisztián KOVÁCS-ANDOR DLA

Investor: Municipality of Visegrád

Constructor: KIPSZER FT Zrt.

Location: Visegrád, Hungary

The old building had to be complemented with the new wing in a narrow area, so that the result would evoke the atmosphere of a medieval town. On the exterior façade, warm grey tone Baunit CretivTop modelling plaster was applied using brush technique, giving the surface a fine texture.

Baunit Materials:
CretivTop

Life Colors: 0935

Mill Chalets



Architect: baudesignzsalcsik
Investor: Mario und Ulrike Müller
Applicator: Goll Bau GmbH
Location: Oslip, Austria

Adjacent to the historic Cselley Mill, seven 'Mill Houses' seamlessly integrate with the cultural center. Their façade design, using a classic slurry technique, harmonizes with the historical ensemble. Each chalet boasts unique interior colors, enhancing the tranquil holiday experience.

Baumit insulation System: Baumit StarSystem EPS
Baumit Materials: CreativTop

WAG 23

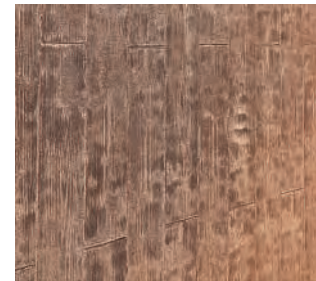


Architect: DI Andreas Mitterer
Ziviltechniker GmbH
Investor: Private
Applicator: Gemma Putz
Location: Kitzbühel, Austria

The building reinterprets the townhouse, blending a closed residential wing with distinctive plaster surfaces and an open, glazed access wing. White and black hues dominate, while PV systems ensure self-supply and green roofing adorns the underground car park exit.

Baumit insulation System: Baumit ProSystem
Baumit Materials: CreativTop, Finish

Schloßchemnitz residential park



Architect: Ing. Holger Schröder
Constructor: Technomash BIG AG
Location: Chemnitz, Germany

In Schloßchemnitz, three apartment blocks feature 15 luxuriously furnished units. The façade, boasting a natural and contemporary timber look achieved with Multi 5, is accentuated by modern joint profiles, providing a structured appearance. Special silicone stencils were used to create the timber effect, followed by painting with StarColor white and glazing in wenge.

Baumit insulation
System: Baumit StarSystem EPS
Baumit Materials: GranoporTop, Fascina SEP, StarColor, Lasur, Multi 5, RatioGlatt, PremiumPrimer DG 27

Social institution



Investor: Katholische Jugendfürsorge der Diözese Augsburg e.V.

Constructor: Murati Arben

Location: Kempten, Germany

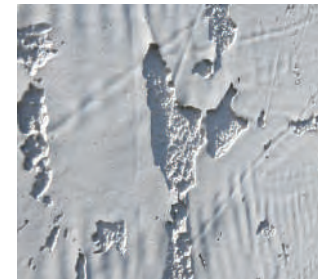
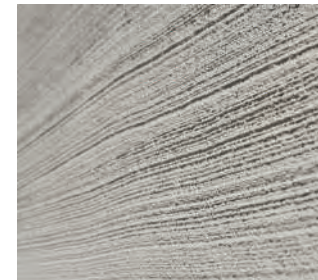
Facing structural defects, an educational institution underwent extensive reconstruction, blending energy efficiency with sophisticated architecture. ETICS and plaster façades, coupled with brushed rendering and modern color schemes, imbued the building with a distinct flair. Glass fiber concrete windowsills and innovative paint techniques further enhanced its appeal.

Baumit insulation

System: Baumit StarSystem Mineral

Baumit Materials: Fascina SEP, MPA 67 SL, StarContact Light

NEPOMUK: wine restaurant & wine café



Investor: Markus Weinmann
Constructor: Pech & Bösing GmbH
Location: Worms, Germany

The former pharmacy underwent extensive renovation, transforming into a wine restaurant and café with added guest rooms. Combining traditional craftsmanship with modern concrete aesthetics and professional thermal insulation, the building achieves a uniform appearance despite its varied materials. The chosen concrete grey base color, along with a brushed finish, offers both visual vibrancy and durability.

Baumit insulation
System: Baumit
StarSystem Mineral
Baumit Materials:
CreativTop, ProContact,
MPA 68 FL, Multi 5

Promienna Premium



Photos: ONYX Development Sp. z o.o. Sp. K

Architect: GDA Architekci Sp. z o.o.

Investor: ONYX Development
Sp. z o.o. Sp. k

Constructor: ONYX Development
Sp. z o.o. Sp. k

Location: Piła, Poland

A multi-family building with ground-floor service functions and an underground garage in Zielona Dolina, Piła, features an unconventional shape, facilitating an internal courtyard. The façade, blending earthy tones with modern mosaic plaster on the ground floor, exudes a contemporary elegance. Light brown plaster predominates, complemented by strategically positioned dark gray inserts, adding architectural interest.

Baumit insulation

System: Baumit
ProSystem

Baumit Materials:
CreativTop, MosaikTop
Superfine, Classico
Special, Metallic,
ProContact, NivoFix

Solaris Park I



Photos: B2 Studio Sp. z o.o.

Architect: B2 Studio Sp. z o.o.

Investor: Semaco Invest Group Sp. z o.o.

Constructor: Expres-Konkurent Sp. z o.o.
Sp.k.

Location: Kraków, Poland

Residential enclave, surrounded by park and a major artery, boasts raw concrete buildings resembling stone. Plaster and green elements blend with surroundings. Material proportions vary, more concrete facing street, more greenery facing park. Plaster colors adjust, darker for park side, lighter with concrete and wood accents inside.

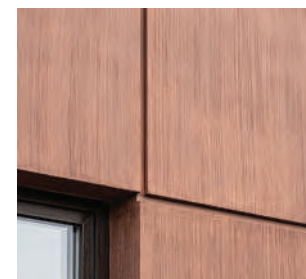
Baumit insulation

System: Baumit
ProSystem

Baumit Materials:

CreativTop, SilikonTop,
ProContact, NivoFix

D44 THE CLINIC



Architect: Architektoniczne Biuro Projektowe Podonowscy S.C.

Investor: Asklepios Technologies Sp. z o.o.

Constructor: Przedsiębiorstwo Budowlane Walczak Ewa Walczak i Stanisław Walczak Sp. J.

Location: Kalisz, Poland

D44 The Clinic is a medical facility offering services primarily in dermatology, surgery, and plastic surgery. The concept aimed to establish an environment where patients are enveloped in professional care within welcoming interiors. Emphasis was placed on the aesthetics and structural quality of the building. The final outcome is deemed satisfactory, partly attributable to the collaboration with Baumit.

Baumit insulation

System: Baumit ProSystem

Baumit Materials:

CreativTop, SilikonTop, MosaikTop, ProContact, NivoFix

Baumit house



Photos: Rok Deželak

Architect: Studio.A+V, d.o.o.
Constructor: Graditelj d.o.o.
Applicator: Mogg projekti d.o.o.
Location: Trzin, Slovenia

This building, situated in a business zone, underwent renovation to accommodate employees with offices, service areas and storage. The façade is used as an exhibition space for 13 creative techniques.

Baumit insulation System: Baumit StarSystem EPS

Baumit Materials: StarTop, StarContact Light White, KlimaWhite, KlimaFino, KlimaFinish, Ionit Finish, IonitColor, Alpha 2000, Baumacol FlexTop, MM50

Farmhouse architecture



Constructor: Daniel Simon Freigericht
Location: Langenselbold, Germany

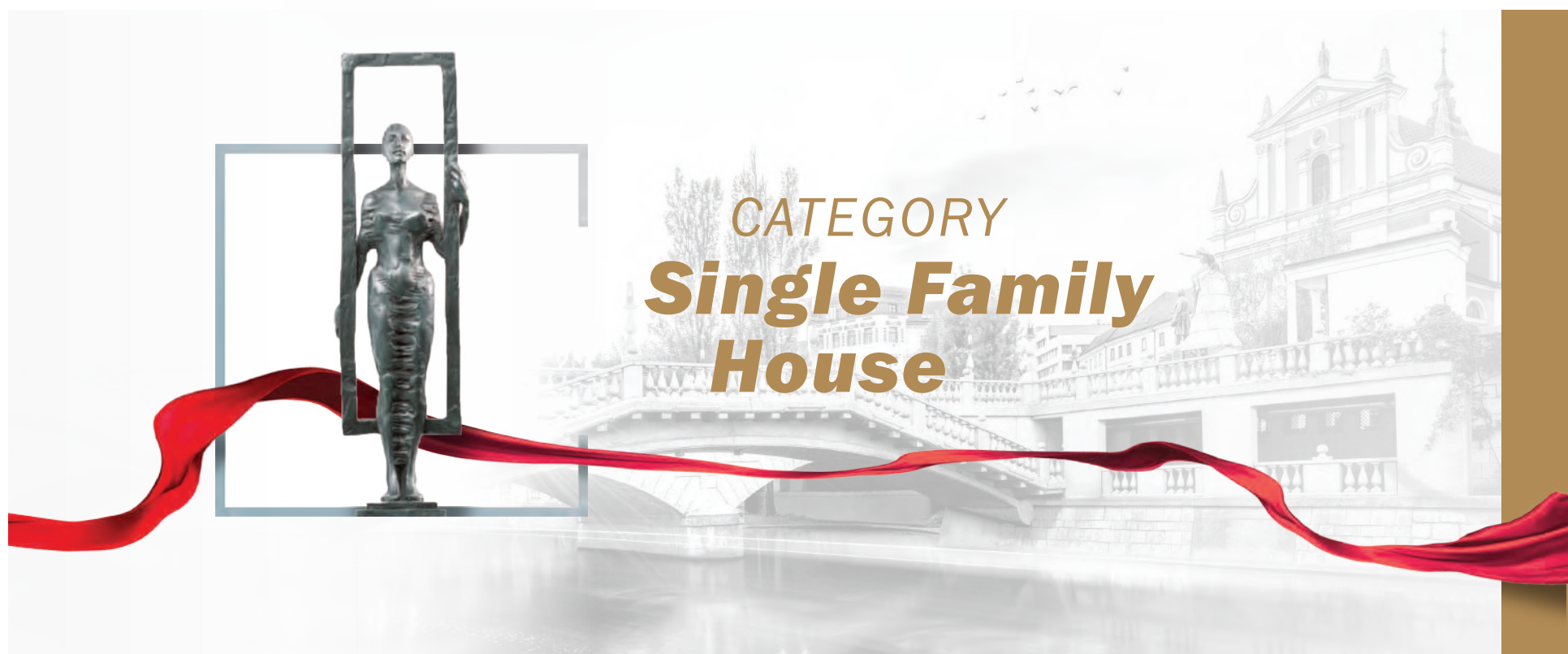
The residential property in Langenselbold's industrial area boasts a distinctive façade design. Combining greyish imitation wood plaster with dark brown wood, it exudes rural farmhouse charm with a modern twist. The creative technique used for the façade, including brushed finish with StyroporLeichtputz SL67, adds a personal touch to the building's aesthetic.



Baumit Materials:
CreativTop, Lasur, MPA
67 SL, 2PremiumPrimer
DG 27

*A new building should deliver a feeling
of hope.*

(Santiago Calatrava)



CATEGORY
***Single Family
House***

Snowfall House



Architect: George Athanasopoloulos (Lead Designer), Christina Kiorsavva

Investor: Private

Constructor: Meramos

Location: Kalavryta, Greece

Snowfall House, nestled in Helmos mountain's wilderness near Kalavryta ski center, sits on a 4000 sqm plot, basking in sunlight at 1200m altitude. Its main structure, housing a family of four, extends southward for scenic views and warmth, while the north part shields against winds. A covered courtyard offers shelter, embodying the concept of a snow-covered rocky abode. With wood and stone textures and minimal environmental impact, the design harmonizes with nature.



Baumit insulation System: Baumit ProSystem

Baumit Materials: CreativTop, StellaporTop Fine, GranoporTop, GranoporColor, Finish, ProContact

Life Colors: 0019



Photos: Yiorgis Yerolymbos

Family Houses Briežky



Architect: MUUR, s.r.o., Bratislava

Constructor: PANNONIA STEEL, s. r. o.

Location: Bratislava, Slovakia

Two larger houses with flat roofs were built in the upper half of the small plot between the forest and the former vineyards. In the lower half are two smaller and more distinctly shaped houses with set-back storeys inserted into the pitched roof from the north. The upper houses are inserted in the bays created by the lower houses.



Baumit Insulation System: Baumit

StarSystem EPS

Baumit Materials: SilikonTop

Life Colors: 0019



“Plochata” House



Architect: arch. Rumen Shekerov and arch. Stefan Shekerov, "M-2 Invest"

Investor: Private

Applicator: M and G

Location: Pleven, Bulgaria

The façade of the "Plochata" house is constructed with ETICS Baumit Open, final coatings NanoporTop and PuraTop K2.0. Colors are NanoporColor in shades 0019 and 0881.



Baumit insulation System: Baumit openSystem

Baumit Materials: NanoporTop, PuraTop, NanoporColor, StarContact White, openTherm

Life Colors: 0019 0881



House GK



Investor: Private

Constructor: Kulmer Bau GmbH

Applicator: PTT Putz u. Thermotechnik

Location: Steiermark, Austria

A farmhouse between tradition and modernity. The old farmhouse in an idyllic location is enthroned on its extensive grounds above the town of Gleisdorf. The house and outbuildings were completely renovated and perfectly complemented by a new building. The shape and style of old farmhouses with huge courtyard were interpreted in a contemporary way. The modern elements of wood, glass and plaster structures in the façade create an atmospheric appearance. With great attention to detail, you can experience a magnificent symbiosis of tradition and modernity.



Baumit insulation

System: Baumit
ProSystem

Baumit Materials:
CreativTop, SilikonTop,
SilikonColor, MPA
35 White, MPA 35 L,
SanovaMonoTrass



Carnation Street 4



Architect: Eventus Pro, Sigitas Sparnaitis

Investor: Private

Constructor: UAB Naujas fasadas

Location: Vilnius, Lithuania

The irregularly shaped two-story building blends naturally into the existing natural context. The main residential activity is organized on the eastern side of the plot, with the building separating it from the busy road. The planned structure of the planned building consists of three zones: technical, gallery and residential. A white, smooth, delicate plaster was chosen for the façade decoration.



Baumit Insulation System: Baumit ProSystem

Baumit Materials: NanoporTop

Satu Lagi House



Architect: Arch. Daniele Di Santolo
Investor: Private
Constructor: Eurocase Friuli
Applicator: Vando Venuti
Location: Terzo D'Aquileia (UD), Italy

The three tops of this peculiar building make it quite unuseful in the overview. The contrast of colors between light and dark makes the geometries stand out, vaguely reminiscent of industrial buildings.



Baumit insulation System: Baumit
 StarSystem Mineral
Baumit Materials: StarTop, StarContact

Éger project



Architect: Horváth S. Építész Stúdió Kft.
–Sándor HORVÁTH

Investor: MIB Property Kft.

Constructor: Gádor Stílusépítő Kft.

Location: Győr, Hungary

A special chain is formed by this family house complex, achieved by expanding the half-gable masses. Large glass panels let in light to the south, while the projecting terrace roof gives shade in summer. This, together with the Baumit insulation system, gives the houses excellent energy efficiency.

Baumit Materials:
SilikonTop, MosaikTop,
DuoContact

Life Colors: 0018

Five houses



Architect: Élményotthon Ingatlancsoport - Tibor ECKHARDT, Zoltán TÓTH

Investor: Private

Constructor: Élményotthon Ingatlancsoport - Ingatlanfejlesztő Kft.

Location: Vác, Hungary

The heart of the houses is the common space, where space proportions and light experience are the key. The modesty of the white plastered façade provides an excellent base for the playfulness of the masses and roofs, the emphasis of the large natural-framed windows and the spacing of the woodwork.

Baunit Materials:
SilikonTop

Life Colors: 0018

G.Ö Alaçatı Evi



Architect: Talha Haksever
Constructor: Fabers Proje
Applicator: Yapı SD-Mehmet Salih Demir
Location: İzmir, Türkiye

Located in Alaçatı, İzmir, the house was designed in a rectangular shape in harmony with the corner plot. Designed as a summer house, the house stands out as a modern version of the architecture of the region with the harmony of wood, stone and CreativTop.

Baumit Materials: GranoporTop, CreativTop

Life Colors: 0018 0872

House Arifagić



Architect: Bojan Šipka architects d.o.o.
Investor: Nedžad Arifagić
Applicator: ECK d.o.o.
Location: Kozarac, Bosnia and Herzegovina

Architecture is presented in masses, its main features are the obvious use of strong architectural elements, offering visuals in which natural texture and tonality are the main protagonists.

Baumit insulation System: Baumit StarSystem EPS

Life Colors: 0019

NS House



Architect: Parametar Studio - Skopje
Investor: Smilja Stojanovik
Applicator: Germak
Location: Negotino, North Macedonia

Situated in Negotino's outskirts, the cascading building elegantly blends into the sloping terrain. It features bedrooms and kitchen at the highest point, a living area with a city view, and a two-level yard with a pool. The design, accentuated by wooden façade panels, exhibits architectural finesse.

Baumit insulation System: Baumit openSystem

Baumit Materials: NanoporTop, StarContact, KlimaWhite, KlimaFino, KlimaColor

Life Colors: 0019

Cube House



Architect: Anta architekci
Investor: Tomasz Pilecki
Constructor: TH tradeks
Location: Michałowice, Poland

A single-family house with a very carefully thought-out shape concealing an equally carefully thought-out functional layout. The building is entirely covered with white plaster. This is a deliberate move - a clean, devoid of decorations façade emphasizes the unique shape and gives it extraordinary lightness.

Baumit insulation System: Baumit ProSystem
Baumit Materials: SilikonTop, ProContact

Life Colors: 0019

Compact house



Architect: Anta architekci

Investor: Konrad Piesyk, Katarzyna Czarnota Piesyk

Constructor: KABIS CONSULTING Konrad Piesyk, KABIS CONSULTING ENGINEERS Sp.z o.o.

Location: Rędziny, Poland

The building combines modernity with traditional barn aesthetics. Slate-covered gable roof and asymmetrical glazing add contemporary flair, while the white ground floor balances with the dark slate, creating a light, unobtrusive presence amidst the surroundings.



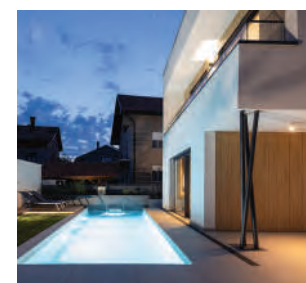
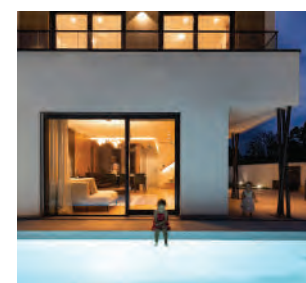
Baumit insulation

System: Baumit ProSystem

Baumit Materials: SilikonTop, ProContact

Life Colors: 0019

Villa KEA



Architect: Arde Line doo
Investor: Arde Line doo
Constructor: Arde Line doo
Location: Niš, Serbia

Villa KEA in the Arde Land settlement in Niš, was designed for family housing in accordance with the user's requirements. The building was built according to the principles of passive houses, where special attention was paid to the implementation of systems that use renewable energy sources for the needs of the house. The facility is equipped with a "smart house" system, heat pump, solar panels, and is a combination of modern and economical.

Baumit insulation
System: Baumit ProSystem
Baumit Materials: SilikatTop, ProContact

Life Colors: 0019

Whiteriver House



Architect: Ian Black Architect, Drogheda, Co Louth, Ireland

Investor: Iain & Jennifer Wogan

Constructor: MRM Structural Ltd.

Location: Dunleer, Co Louth, Ireland

Energy efficiency was prioritized through airtightness, mechanical ventilation with heat recovery, and an air to water electric heat pump. Baunit External wall insulation achieved a U value of 0.13W/m²K, ensuring stable internal temperatures of 19-21°C despite external variations.

Baunit insulation

System: Baunit

ProSystem EPS

Baunit Materials:

NanoporTop Fine

Life Colors: 0019

Casa Tomada



Architect: Castroferro Arquitectos
Investor: Private
Constructor: Construcciones Castro Figueiro
Location: Vigo, Spain

The project maximizes a small, sloping plot by creating an intimate patio at the house's center. The ground floor revolves around this space, with the kitchen and living areas opening onto it for a sense of intimacy and connection to the outdoors.



Photos: Héctor Santos-Díez

Baumit insulation
System: Baumit StarSystem EPS
Baumit Materials: StarTop, GranoporTop, StarContact

Life Colors: 0019

Between modernism and archetype



Photos: Maciej Jeżyk - ONI Studio

Architect: MEEKO Architekci

Investor: Private

Constructor: Fachman

Location: Mielec, Poland

The house near Mielec combines traditional barn elements with modernist design. Anthracite Ruukki Classic sheet metal contrasts with the white ground floor, while cedar boards add warmth. The large, roofed terrace extends the living space and offers ideal southwest exposure, perfect for enjoying warm summer evenings.

Baumit Materials:

CreativTop, ProContact, NivoFix

Life Colors: 0019

Zeytinli Evi



Architect: Office Istanbul Architects
Investor: Office Istanbul Architects
Constructor: Office Istanbul Architects
Applicator: Office Istanbul Architects
Location: Izmir, Türkiye

Inspired by Mediterranean life, Zeytinli House is located in the countryside of Seferihisar, Izmir in western Turkey. In this land, which gives life to a rich vegetation, a wide biodiversity and unique endemic species, Gölcük Village appears at the highest point of the hill. Surrounded by olive trees, green hills flowing between each other, vineyards that have been giving life to the wines of Teos for years shape the geomorphology of Gölcük Village.

Baumit Materials:
GranoporTop, StarColor

Life Colors: 0019

Experience home



Architect: Élményotthon Ingatlancsoport - Tibor ECKHARDT, Zoltán TÓTH

Investor: Private

Constructor: Élményotthon Ingatlancsoport - Ingatlanfejlesztő Kft.

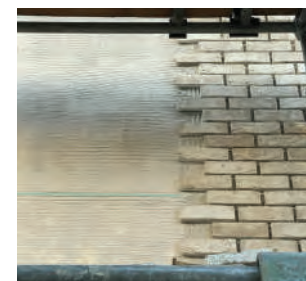
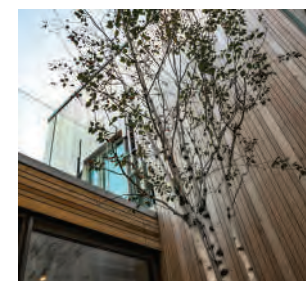
Location: Vác, Hungary

This family house is exemplary example of contemporary design, with high technical content. According to the architectural concept, it is not only a building on the breathtaking panoramic plot, but also outside and inside it provides a space experience with 145 square meters of living space.

Baunit Materials:
SilikonTop

Life Colors: 0019

Passive House on the Marina



Architect: Wain Morehead Architects Ltd
Constructor: Lough Contractors Ltd
Location: Cork, Ireland

The project prioritized sustainability by reusing materials like oak parquet floors and salvaged windows. Locally sourced and low VOC materials, along with eco-friendly construction methods, were employed to reduce the building's carbon footprint. Collaboration with Baumit ensured a seamless integration of the brick slip system and lime render features, referencing the existing dwellings' finishes.

Baumit Materials:
SilikonTop, BrickSlip System

Life Colors: 0019

Private Residence Varaždin



Photos: Tomislav Marcijuš

Architect:

Darko Brezovec

Investor: Renato Potočnik

Constructor: Vrba Kolor

Applicator: Vrba Kolor

Location: Varaždin,
Croatia

Constructed with premium Baumit materials, this private residence epitomizes modern elegance and environmental consciousness. Its façade, boasting exquisite colors and textures, offers both aesthetic appeal and exceptional thermal insulation. Amidst the urban landscape, this home stands out, providing residents with a luxurious and sustainable living experience.

Baumit Insulation System: Baumit ProSystem

Baumit Materials: PuraTop, SilikonTop, ProContact

Life Colors: 0019 0891

BIN House



Architect: BECZAK / BECZAK / ARCHITEKCI
Investor: Private
Constructor: Zakład Remontowo-Budowlany Józef Wróbel
Location: Warszawa, Poland

Designed for an art-loving family in Warsaw, Poland, this house harmonizes with nature by preserving existing trees and embracing a dynamic layout. Despite local regulations mandating a pitched roof, a wooden pavilion atop the living area adds flair and creates a sheltered terrace. The interplay of full walls and garden greenery enhances the home's scenic beauty.

Baumit insulation System: Baumit StarSystem EPS

Baumit Materials: SilikonTop, SilikonColor, StarContact White

Life Colors: 0019 0891 0931

Zatoka House



Photos: Aleksandar Nakić

Architect: Studio Arkhitekton i Arhitektura
Buđevac

Location: Ostrovica, Serbia

This family house harmonizes with nature, blending simplicity with landscape integration. Despite its basic form, it withstands mountainous and river conditions while maintaining a strong connection to nature. Spanning 47m², it serves as both a home and photography studio, using locally sourced materials and Baumit Ionit System for eco-friendly interior walls.

Baumit Materials:
CreativTop, PuraTop,
Lasur, IonitFinish,
IonitColor

Life Colors: 0891

Robyg Jagodno B,C,D



Architect: MAJOR Architekci
Investor: Robyg S.A.
Constructor: Robyg Construction
Location: Wrocław, Poland

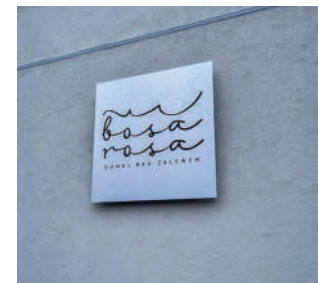
Jagodno is the first investment of the ROBYG Group in Wrocław. The estate was designed in the spirit of modern architecture, with diverse development: intimate terraced houses and atriums as well as modern multi-family buildings - thanks to which the space will be conducive to building neighborly relations.

Baumit insulation System: Baumit ProSystem

Baumit Materials: CreativTop, PuraColor, SilikonTop, MosaikTop Superfine, SilikonColor, NivoFix

Life Colors: 0891 0019

Bosarosa



Architect: Autorska Pracownia Architektoniczna PERSPECTIV Jacek Dobrzański

Investor: Jacek Dobrzański

Constructor: System Gospodarczy

Location: Radków Kłodzki, Poland

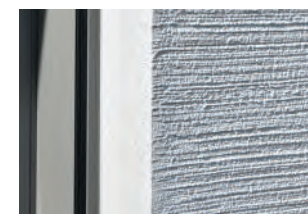
Nested within the resort complex on Zalew Radkowski's southern slope, the two cottages offer a nostalgic charm reminiscent of the PRL era. Each boasts a terrace and lawn, providing breathtaking views of Góry Stołowe and the reservoir. With cozy interiors and expansive corner windows, guests can enjoy stunning sunsets year-round.

Baumit insulation System: Baumit ProSystem

Baumit Materials: CreativTop, Finish, StarContact White, ProContact

Life Colors: 0907

Contemporary Insulation



Investor: Familie Weiß
Constructor: Bauwerk Handel GBR
Location: Bielefeld, Germany

On the former factory site, a luxurious residential area now stands, featuring exquisite detached family houses with exceptional architecture. The ETICS façade boasts a brushed finish with CreativTop, echoing the Bauhaus style for a unique aesthetic. Craftsmen meticulously crafted the surface using specially made tools, meeting the client's goal for perfection.

Baumit insulation
System: Baumit
StarSystem EPS
Baumit Materials:
CreativTop, StarColor,
StarContact White

Life Colors: 0914

Embracing simplicity



Architect: Pyxis Nautica Építésziroda Kft.
– Dávid TÓTH, Tamás TÓTSZABÓ

Investor: Private

Constructor: Richárd KAPORNAI

Location: Zsámbék, Hungary

This simple family house is divided into two different parts. The front, roof and eaves of the street front are grey, while the rear, private part is terracotta. The playfulness of the building also comes from asymmetrical gable roofs of the two parts, as if they were winking at each other.

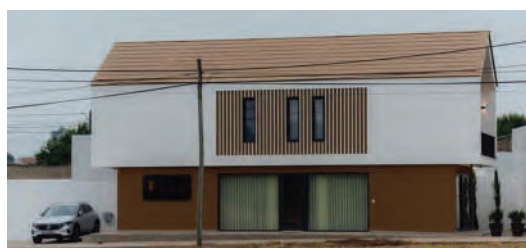
Baumit insulation

System: Baumit
StarSystem EPS

Baumit Materials:
SilikonTop

Life Colors: 0929

Moradia Novacobe



Architect: Novacobe -
Construção e Reabilitação, Lda
Investor: Novacobe -
Construção e Reabilitação, Lda
Constructor: Novacobe -
Construção e Reabilitação, Lda
Location: Benedita, Portugal

Single-family house construction method Light Steel
Frame materials used insulation eps 6cm Suprafix
bonding, busbar reinforced with Opencontact, primer
Uniprimer and Granopor white color and NCS 6030-Y-20R

Baumit insulation
System: Baumit
openSystem
Baumit Materials:
GranoporTop,
openContact, Suprafix

Life Colors: 0151

House P

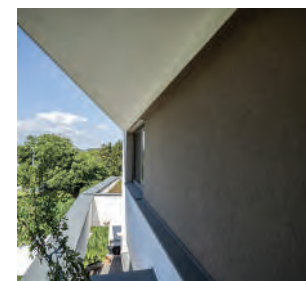


Investor: Private
Applicator: SG-Putz Glettler GmbH
Location: Graz, Austria

Green Oasis in the city. No contradiction - a modern design house and yet a cosy home. The beautiful detached house on the outskirts of Graz is a green Oasis of modern style. The creative surface in a calming earth tone and the robust stone elements of the façade the house blends in perfectly with the landscape. The detailed garden planting creates a perfect setting for the house and combines luxury with closeness to nature.

Baumit insulation
System: Baumit
StarSystem EPS
Baumit Materials:
CreativTop

House VKAM



Architect: DI Klemens Gabriel
Investor: Private
Constructor: Heinzl Bau
Applicator: Koch GmbH
Location: Burgenland, Austria

The building's looped geometry creates a dynamic outer shell. With a ground and upper floor, it features a cantilevered upper level doubling as a carport. Wide canopies offer sun protection, while a roof terrace above the carport ensures privacy. Built with solid brick, its white plaster façade emphasizes spacious glazing.

Baumit insulation
System: Baumit ProSystem
Baumit Materials: SilikonTop

Historical House in Valbruna



Architect: Ing. Giorgia Jordan Stefani;
Studio CivilProgetti

Investor: Private

Applicator: Luca Bressan

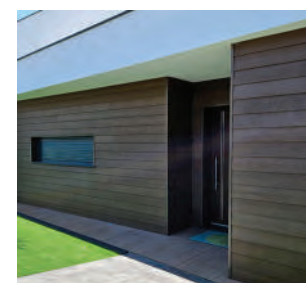
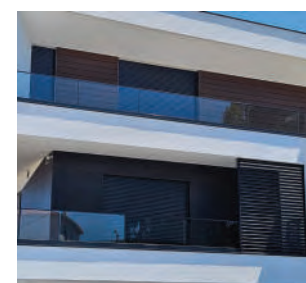
Location: Valbruna (UD), Italy

The refurbishment of this house has brought a modern aesthetic to its façade, seamlessly blending with the town's style. The synergy of wood and white color ensures perfect integration.



Baumit insulation
System: Baumit
openSystem
Baumit Materials:
openContact

Moradia Pousos - Leiria



Architect: Revestimentos J. Vieira Batista
Investor: Revestimentos J. Vieira Batista
Constructor: Revestimentos J. Vieira Batista
Location: Leiria, Portugal

Single-family house with thermal insulation EPS 8cm, adhesive and reinforcing mortar Baumit openContact, Baumit UniPrimer and final coatings Baumit GranoporTop and Baumit GranoporColor. Besides of that, we have also incorporated ventilated façades.

Baumit insulation System: Baumit openSystem
Baumit Materials: GranoporTop, GranoporColor, openContact

Gentle Park



Architect: arch. Lorita Panova, arch. Atanas Panov, arch. Greta Atiya; "LP ARCH"

Investor: KA S RENT

Applicator: Gentle House

Location: Sofia, Bulgaria

*Residential complex of twelve single-family houses
"Gentle Park" is situated in the slopes of Vitosha - one of
the fastest developing areas in Sofia.*

*"Gentle Park" is filled with Baunit Integrated Thermal
Insulation System Star and final coating NanoporTop K1,5.*

Baunit insulation

System: Baunit
StarSystem EPS

Baunit Materials:
NanoporTop, StarContact
White, ProContact

Gentle House IV



Architect: arch. Tanya Mitakeva, arch. Andrei Arnaudov; "Proectta Studio"

Investor: Hristo Stefanov

Applicator: Gentle House

Location: Sofia, Bulgaria

Gentle House IV is a continuation of a series of luxury residential buildings constructed in the area over the past few years. It consists of two detached single-family houses, built using Baunit StarSystem EPS and finished with NanoporTop coating.

Baunit insulation

System: Baunit StarSystem EPS

Baunit Materials:

NanoporTop, StarContact White

Villa Duca D'Aosta



Architect: Arch. Andrea Menzo
Investor: Private
Constructor: Evoluthion Srl
Location: Villa Vicentina (UD), Italy

This elegant single house with swimming pool is an authentic example of the coexistence between modernity and eco-sustainability: the thermal insulation was in fact made entirely with wood coat.

Baumit insulation
System: Baumit
StarSystem EPS
Baumit Materials:
SilikonTop

Tirau House



Architect: SC 3F STUDIO SRL
Investor: Familia Tirau
Constructor: Regie proprie
Location: Cluj Napoca, Romania

Perched on Cluj Napoca's southern hill, the Tirau house boasts modern architecture and spacious terraces offering panoramic city views. Spread across three stories, daily functions occupy the half-basement, bedrooms on the ground floor, and an office on the first floor. Decorative plaster, wood inserts, and glass parapets define its contemporary aesthetic.

Baumit insulation
System: Baumit
StarSystem EPS
Baumit Materials:
SilikonTop

House with swimming pool



Architect: Arch. Stefano Pilosio
Location: Basiliano (UD), Italy

This beautiful single house surrounded by greenery is a haven of peace where you can take refuge from ordinary chaos and seek relaxation. The large windows ensure brightness in the interiors, and the swimming pool provides refreshment during the long summer heat.



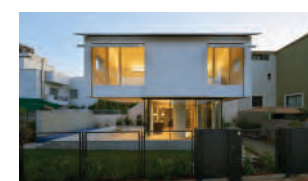
Baunit Materials:
SilikonTop, PuraColor

House E



Architect: Stephan Buerger, Demetra Katsota, Georgios Kourakos, Klelia Siska, Myrto Tsarouchi
Investor: Private
Constructor: ACRM S.A
Location: Artemida, Attica, Greece

Situated in Artemis, Attica, this small house redefines coastal living. Its two volumes, one seemingly floating with a pitched roof, create indoor-outdoor spaces while ensuring privacy. The construction combines concrete, steel, and minimal footprint, maximizing spatial flexibility and visual continuity with the garden.



Photos: Yorgis Yerolymbos

Baunit Materials:
StellaporTop, StarContact, PowerFlex

Duta



Architect: Per-Forma/Daniel Pana

Investor: Dutescu Sofia

Constructor: Conicon Prest SRL

Location: Craiova, Romania

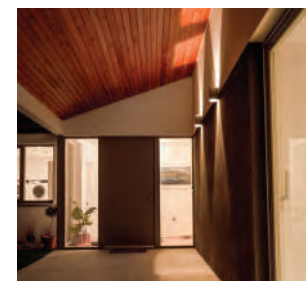
The DUTA house is a house with a minimalist appearance and airy interior spaces. Due to the land, the house has a rectangular shape, inside with many open spaces like open space, glazed areas on the ground floor that contrast with the white, minimalist façade of the first floor. The slats at an angle to the plane of the façade ensure the preservation of the desired level of privacy and indirect natural light in all the rooms of the house.



Baumit Materials:

NanoporTop

Hill House



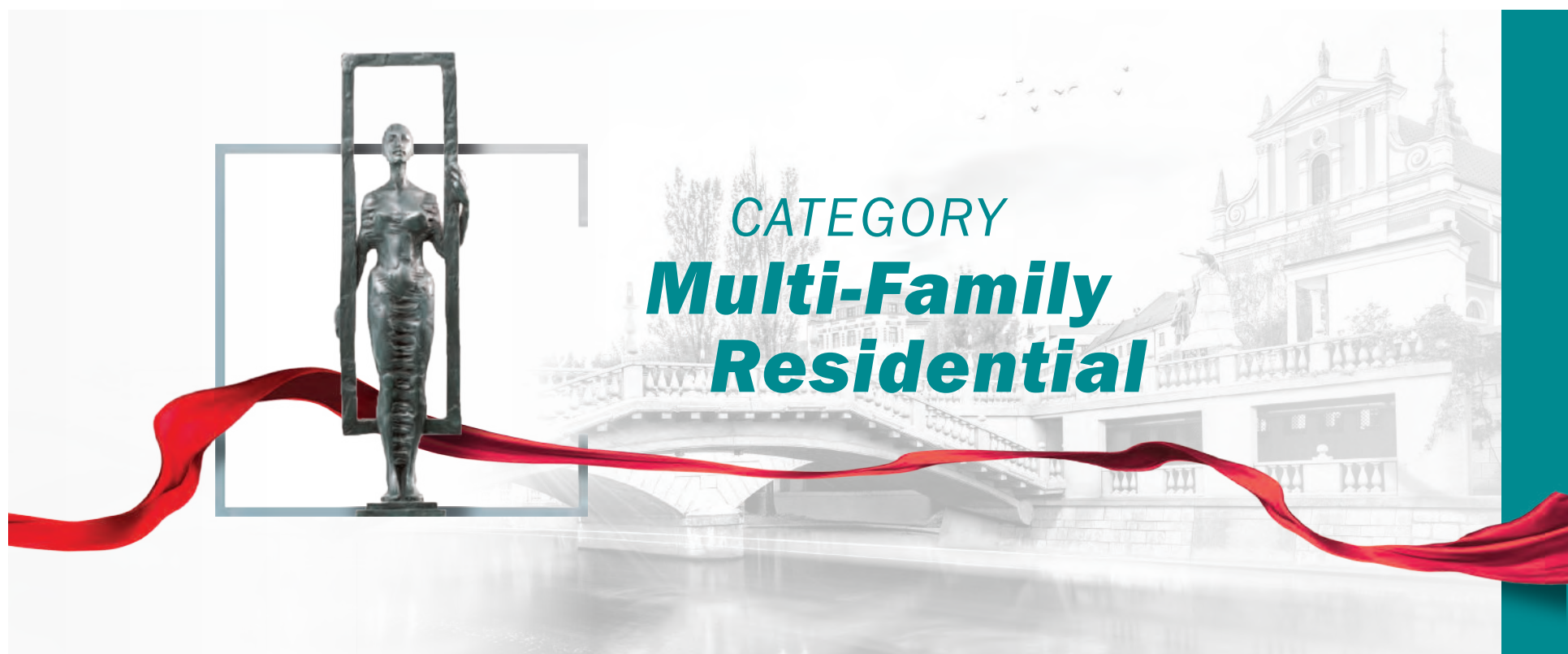
Architect: Paul Keating
Investor: Ricky and Maria Hill
Constructor: J.E Keating and Associates Limited
Location: Cork, Ireland

The linear floorplan allowed us to stretch all of the main living areas Kitchen, Living, Dining and all of the bedrooms to take full advantage of the view. The entrance to the rear parking area is framed by a monolithic Valentia stone clad wall which references the purple hue seen on the rugged coastline below.

Baumit insulation
System: Baumit StarSystem EPS
Baumit Materials: SilikonTop, SilikonTop Fine

*Architecture is the stage on which we live
our lives.*

(Mariaam Farnara)



Cuevas Eternidad



Architect: Pavlos Chatziangelidis, Giota Chala, Eleftheria Fatsea

Investor: QG investments, Padelis Apodiakos

Constructor: QG investments, Padelis Apodiakos

Applicator: Nicusor Grosu

Location: Voula, Attica, Greece

Plot in Voula, 3150.84 sqm, near sea, designed by 314 Architecture studio for experimentation, emotional connection with space. Integrates Mediterranean elements, enclosed gardens, morphological forms. Three autonomous buildings with hanging gardens, connected visually with monolithic plates, sculptural pergolas, creating unified, distinct composition.



Baumit insulation System: Baumit ProSystem

Baumit Materials: GranoporTop Fine, ProContact

Life Colors: 0019



Photos: Spyros Hound Photography

Bulevar Oslobođenja 97

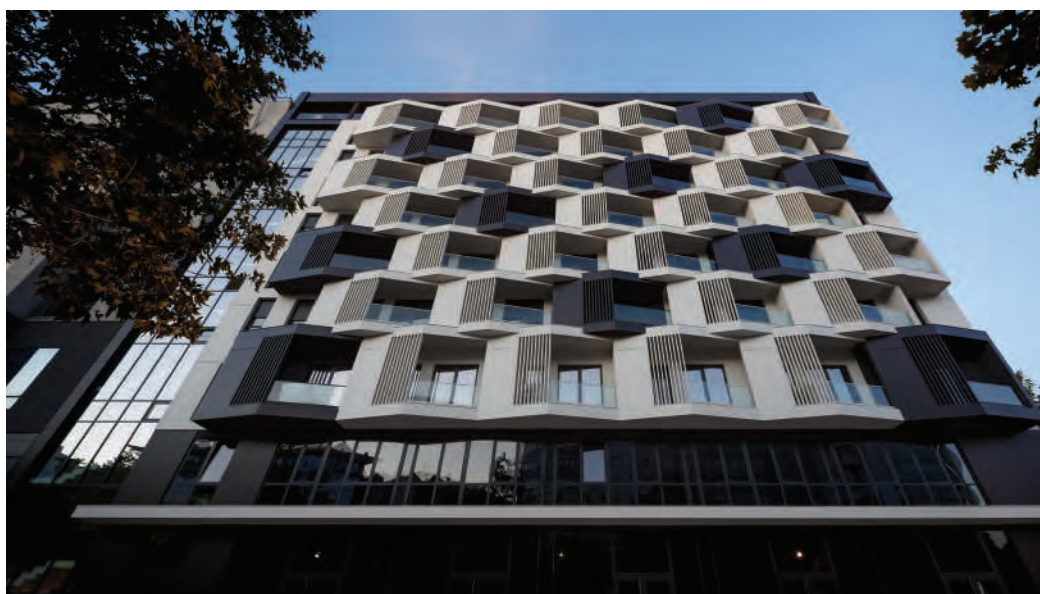


Architect: Kuzmanov and Partners

Investor: Bulevar invest doo

Location: Novi Sad, Serbia

The architect aimed for the building to evoke strong reactions from passers-by, prioritizing seductive architecture. Despite the practical organization and simple plot setting, the main principle was architectural allure. Mutual respect and client freedom facilitated the realization of this distinctive design.



Baumit insulation System: Baumit ProSystem

Baumit Materials: PuraTop, SilikatTop, ProContact, PlanoFix, NivoFix, MPI 25, Solido E225, Beton B20

Life Colors: 0019 0891



NSA13 “TWPEAKS”



Architect: MADhel (M. Herraiz y D.Bergman) + MARMOLBRAVO (M. del Marmol y M.Bravo)

Investor: Empresa Municipal de la Vivienda y Suelo de Madrid (EMVS)

Constructor: Vialterra (subcontrata SATE Hermanos Toribio)

Location: Madrid, Spain

Twpeaks, a social housing project in Vallecas, blends with surrounding urban fabric. It adapts heights to neighboring buildings, ensuring privacy and sociability with raised dwellings, thoughtful gateways, and varied façade elements. Terraces enhance street interaction.



Baumit insulation System: Baumit
StarSystem EPS

Baumit Materials: SilikonTop, CreativTop,
Lasur

Life Colors: 0337 0914



Photos: Pedro Pegenaute

Karlheinz Hora Hof



Architect: querkraft Architekten ZT GmbH

Investor: WIGEBÄ Wiener Gemeindewohnungs Baugesellschaft m.b.H.

Constructor: GERSTL BAU GmbH & Co KG

Applicator: Simsek Bau GmbH

Location: Vienna, Austria

More green space despite densification. Seven living cubes float above the garden deck at different heights for optimising the lighting and views for the existing building. Green spaces and slender residential towers respond intelligently to the conditions. Their façades are coated in various shades of grey and yellow.



Baumit Insulation System: Baumit
StarSystem Mineral

Baumit Materials: StarTop, PuraTop,
GranoporTop

Life Colors: 0988



Photos: Hertha Hurnaus

Nadmottławie



Architect: Schleifer Milczanowski SIM Architekci sp.k.

Investor: Robyg S.A.

Constructor: Device Sp. z o.o.

Location: Gdańsk, Poland

Nadmotławie, mixed-use development in Gdańsk, revitalizes neglected port areas into vibrant hub. Housing, commercial, recreational spaces maximize river views, blend seamlessly with urban landscape. Innovative design: ground floor shops, first-floor patio, top terrace. Wide windows, natural materials enhance connection to surroundings, creating inviting landmark along Motława river.



Baumit insulation System: Baumit ProSystem

Baumit Materials: PuraColor, Lasur, StarContact White, ProContact, NivoFix



Photos: fotograf - umowa licencyjna

The Seashore Rise



Architect: Pavlos Chatziangelidis, Giota Chala, Andrianna Triantafyllopoulou, Alkis Vasalios, Eirini Bouliou, Caterina Palantzi, Giannis Dimitrelis, Dimitris Panagiotou, Antonis Sarris, Alexandros Papadopoulos, Anna Stagaki, Iro Dermitzaki, Popi Papachristou, Timotheos Kopsidas, Harris Grivokostopoulos, Angeliki Ragava, George Ouzounis, Sofia Stavrou, Eva Sofoulaki, Angelos Sotiriou, Chritinna Iliopoulou, Caterina Papoutsas, Caterina Tsili

Investor: Private

Constructor: Euphoria Residences

Applicator: Papadelis Adreas

Location: Glyfada, Attica, Greece

The Seashore Rise by 314 Architecture Studio is a residential building that integrates dynamic petal-like elements inspired by the movement of the sea. Its innovative design includes volumetric changes for privacy, white reflective finishes, Benadresa tiles, custom oak wardrobes, and stylish kitchens by Miton. Pools and artificial lakes on balconies enhance the ambiance.



Baumit Materials: CreativTop, SilikonTop
Fine, PowerFlex



Photos: Voumvakis Architecture Photography

Egremont



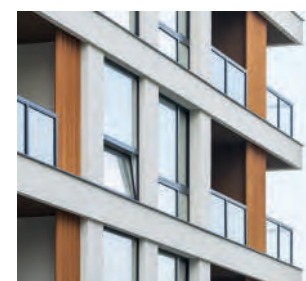
Constructor: Durkan Residential
Location: Dublin, Ireland

Located on Church Road in Killiney, County Dublin, the homes in Egremont are A2-rated and all electric, heated by an integrated air-based heating and ventilation system in the smaller units, and air-to-water heat pumps in the larger ones. Developed by Durkan Residential and designed by Ruth O'Herlihy of architects McCullough Mulvin, the development also saw consulting input from Irish passive house pioneer Tomas O'Leary of MosArt.

Baumit insulation
System: Baumit
StarSystem Mineral
Baumit Materials:
BrickSlip System

Life Colors: 0014

AiA24



Photos: Mihail Novakov

Architect: arch. Krum Sergeev,
"CREATIVE STUDIO"

Investor: Prime Builds

Applicator: FACADE BG

Location: Sofia, Bulgaria

The façade of the residential building "AiA24" is constructed with Baumit ETICS Pro and final coating SilikatTop K1.5 in color 0018.

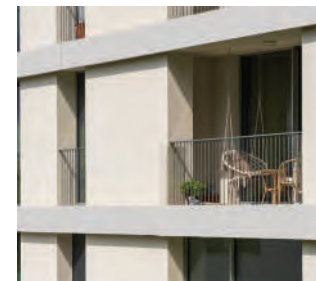
Baumit insulation

System: Baumit
ProSystem

Baumit Materials:
SilikatTop

Life Colors: 0018

Kamenna



Photos: Mihail Novakov

Architect: arch. Vyara Zhelyazkova, arch. Georgi Kutov and arch. Stefan Apostolov; "I/O ARCHITECTS"

Investor: Strukto Engineering Ltd

Applicator: Bulcarp OOD

Location: Sofia, Bulgaria

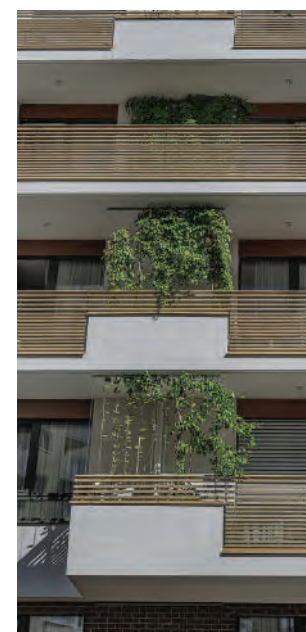
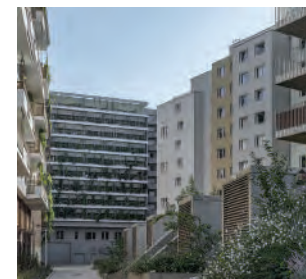
The structure is enveloped with Baunit StarSystem EPS, finalized with NanoporTop K1.5 coating and NanoporColor paint in color 0018.

Baunit insulation System: Baunit StarSystem EPS

Baunit Materials: NanoporTop, NanoporColor, StarContact White

Life Colors: 0018

Lifecampus Wolfgangstreet



Photos: Baunit/Christian Postl

Architect: GERNER GERNER PLUS., M&S Architekten

Investor: wbv-gpa Wohnbauvereinigung für Privatangestellte Gemeinnützige Gesellschaft mit beschränkter Haftung NEUES LEBEN

Applicator: Simsek

Location: Vienna, Austria

Life and campus – these two terms are formative. In this way, a coherent neighbourhood was created, that offers living quality for residents in all life cycles. Social diversity and changing needs are catered for in the wide range of flats on offer. Green façades are not only eye-catching but an ecological answer to „urban heat“.

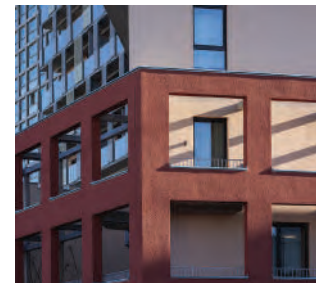
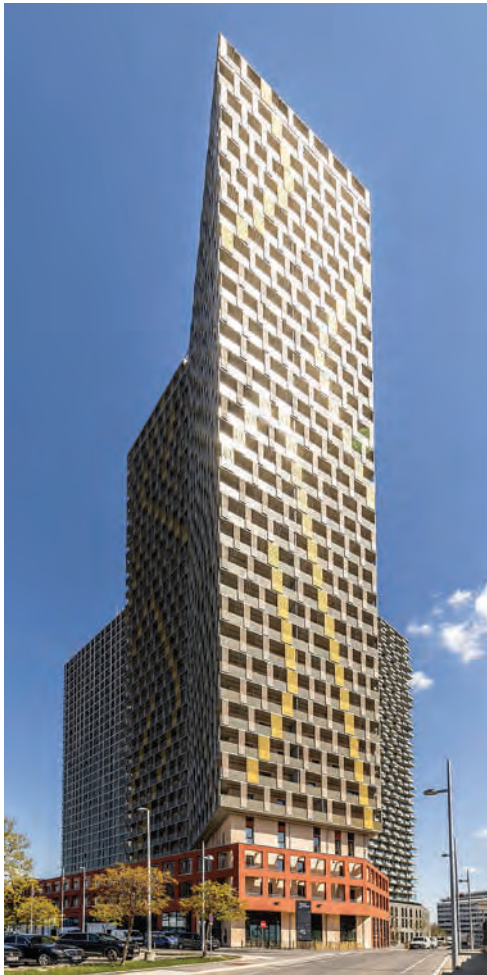
Baunit insulation

System: Baunit StarSystem Mineral

Baunit Materials: SilikatTop, SilikonTop, SilikonColor

Life Colors: 0019

Q-Tower



Photos: Baunit/Christian Postl

Architect: Rüdiger Lainer + Partner
Architekten ZT GmbH

Investor: ÖSW Österreichisches
Siedlungswerk Gemeinnützige
Wohnungsaktiengesellschaft

Applicator: Simsek Bau GmbH

Location: Vienna, Austria

The Q-Tower redefines high-rise construction with its innovative design, addressing urban challenges sustainably. Its distinctive silhouette and multi-faceted façade, featuring gold and copper tones, create a visually stunning presence, appearing as if floating above the surroundings.

Baunit insulation

System: Baunit
StarSystem Mineral

Baunit Materials:
SilikonTop, SilikonColor

Life Colors: 0019

Colina Lac



Architect: Quadratum Architecture
Investor: BluePlanet Distribution
Constructor: Concelex Romania
Location: Saftica, Ilfov, Bucharest, Romania

Colina Lac is the inaugural phase of a visionary development fostering community cohesion. Spread over 3 ha, it comprises 112 meticulously crafted homes, with future plans for amenities like schools, sports fields, and commercial spaces. Drawing from iconic European cities, each house bears a unique identity, steering away from monotonous terraced housing while maintaining a cohesive aesthetic.

Baumit insulation System: Baumit ProSystem
Baumit Materials: NanoporTop

Life Colors: 0019

ATRIA Residence



Photos: Miloš Martinović

Architect: Centar za arhitekturu Beograd

Investor: Coherence Group d.o.o.

Constructor: GR Popović Gradnja

Location: Belgrade, Serbia

With its authentic architecture and unique environment, ATRIA Residence redefines the concept of comfortable lifestyle in an urban surrounding. The complex, designed to the highest standards, rises on the location at which the city harmoniously coexists with the nature, providing the tenants with the luxury of having a park-forest as the backyard, all that while at the vicinity of the city center.

Baumit Insulation System: Baumit ProSystem, Baumit CeramicSystem

Baumit Materials: SilikatTop, MPI 25, Baumacol FlexUni, Baumacol ProPlus, Baumacol FlexTop, Baumacol FlexTop White

Life Colors: 0019

Dhil Alsamaka



Photos: Youmvakis Architecture Photography

Architect: Pavlos Chatziangelidis, Giota Chala, Evi Apodiakou, Eleftheria Fatsea
Investor: QG investments, Padelis Apodiakos
Constructor: QG investments, Padelis Apodiakos
Applicator: Nicusor Grosu
Location: Voula, Attica, Greece

The architectural design aims to create a contemporary landmark in Voula, considering both current and future needs. It features a double shell for privacy, with curved plates creating dynamic shadows and visual perspectives. Sustainable elements include water surfaces, green spaces, and a perforated pergola for shading and ventilation, promoting a symbiotic relationship with the environment.

Baumit insulation System: Baumit ProSystem
Baumit Materials: GranoporTop Fine, ProContact

Life Colors: 0019

Oxygen



Photos: Papadiotis Gavril

Architect: Pieros Pieris
Investor: Private
Constructor: Sustain Development Services
Applicator: Georgios Birbilis
Location: Marousi, Athens, Greece

Greece's 1st BREEAM-certified residential complex, 'Oxygen', prioritizes sustainability and well-being. Smart features, private gardens, communal green spaces, and home offices redefine modern living.

Baumit insulation System: Baumit ProSystem
Baumit Materials: GranoporTop Fine, ProContact

Life Colors: 0019

Residential Complex Čerešne Lake



Architect: Architekti Šebo Lichý s. r. o.

Investor: ITB Development, a.s.

Constructor: ise, s.r.o., MONTY Pro spol. s r.o.

Location: Bratislava, Slovakia

When creating the Čerešne complex, the architects tried to respond to the diverse phenomena occurring in the surroundings. Therefore, the whole complex opens towards the forest park and closes towards the shopping centre. The creators wanted to achieve its community character as opposed to the anonymity of monotonous residential complexes.

Baumit insulation

System: Baumit ProSystem Mineral

Baumit Materials: SilikonTop

Life Colors: 0019

White ft. black



Photos: Žiga Lovšin

Architect: Lab Arhitekti d.o.o.
Applicator: Makro 5 Gradnje d.o.o.
Location: Ljubljana, Slovenia

Residential building in Ljubljana connects multi-apartment and detached houses, aiming to unify the area. Architects prioritize innovative design, arranging four floors 'randomly' around a central core. 120 balconies soften the appearance, contrasting with the white façade. Ground floor hosts offices, upper floors storage and bicycle areas.

Baumit insulation
System: Baumit ProSystem
Baumit Materials: PuraTop, SilikonTop, ProContact

Life Colors: 0019

Kay River Lofts



Architect: Ivan Kroupa architekti, spol. s r.o.

Investor: Karlín Group Management a.s.

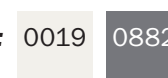
Constructor: ELSEREMO, a.s.

Location: Prague, Czech Republic

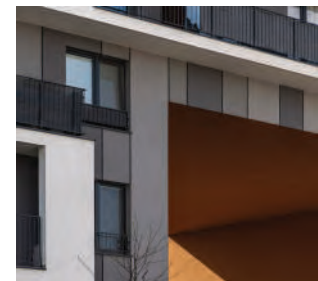
Kay River Lofts presents stylish living close to the centre of Prague, offering 55 apartments and penthouses with exceptional standards, generous terraces and breathtaking views of the Vltava River and the Prague skyline. The modern look of the building is accentuated by the combination of soft white and black surfaces on the façade.

Baumit Materials: StarTop Fine, DuoContact

Life Colors: 0019 0882



Slnečnice - City Zone A4, A5, A6



Architect: Juraj Benetin,
Matej Grébert, Miroslav
Čatloš; Compass, s.r.o.
Investor:
CRESCO REAL ESTATE a.s.
Constructor:
Chemkostav, a.s.
Location:
Bratislava, Slovakia

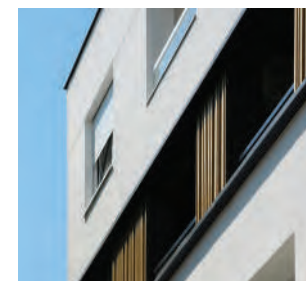
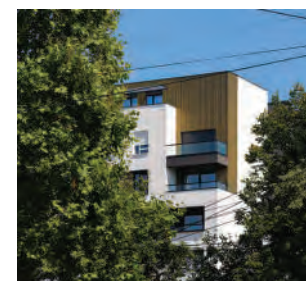
In the project there is an obvious ambition to realize pleasant living and quality architectural form while respecting the brief with a large number of apartments. The façade is based on continuous loggias that line almost the entire house. The white colour emphasises the horizontal elements, the grey accentuates the ground floor and the receding roof floors.

Baumit insulation System: Baumit
ProSystem Mineral

Baumit Materials: SilikonTop, PuraColor

Life Colors: 0019 0883 0321

P63



Architect: KontraStudio
Investor: KontraStudio Invest
Constructor: KontraStudio Invest
Location: Niš, Serbia

The residential and commercial building is located in Niš, in a quiet street in the wider city center. It has an ideal location near the river, main roads, schools and health institutions.
The building was designed in an uninterrupted sequence, of considerable size in an environment, with a dominant façade front, in accordance with the tendency of transformation of the existing block.

Baumit insulation System: Baumit ProSystem
Baumit Materials: SilikatTop, PuraTop, ProContact

Life Colors: 0019 0891

Luzern



Architect: Scheitlin Syfrig Architekten AG
Investor: Pneumatikhaus AG
Applicator: SCHMID ARCHITEKTUR & BAUMANAGEMENT AG
Location: Luzern, Switzerland

*The latest standards and technologies:
Living and working in an environmentally
friendly building.*

Baumit Insulation System: Baumit
StarSystem Mineral

Baumit Materials: NanoporColor,
MultiContact MC 55 W, CeramicFix

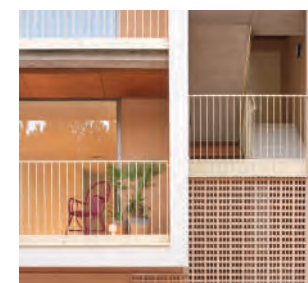
Life Colors: 0186

SFJ6



Architect: MARMOLBRAVO + MADHEL
Investor: Empresa Municipal de la Vivienda y Suelo de Madrid, EMVS
Constructor: AMENABAR
Location: Madrid, Spain

SFJ6 is a project of 102 dwellings designed to adapt to the complexity of the city, solving urban problems and generating quality public spaces in its surroundings. It is integrated into the city as a folded volume that embraces the disparate existing buildings, taking special care of the contact areas and adapting its ground floor to the topography.



Photos: José Hevia

Baumit insulation
System: Baumit StarSystem EPS
Baumit Materials: CreativTop, StarTop, Lasur
Life Colors:

0405 0376

Small forest condominiums



Architect: Lukácsi Építész Műterem Kft.
–Tamás LUKÁCSI

Investor: ADASTE 2003 Kft.

Constructor: Jáger és Társa Kft.

Location: Mosonmagyaróvár, Hungary

According to the eco-conscious architectural concept, the energy-efficient houses will have a large horizontal and vertical green area. Baumit CreativTop was used for the special structure of the façade using broom and concrete technique. Baumit Metallic façade paint was applied on some surfaces.

Baumit Materials: CreativTop, DuoTop, Metallic

Life Colors: 0433 0233

Solaris



Architect: maerz ag

Investor: Aktiengesellschaft für Sachwerte, St.Gallen

Applicator: BAUSTOFFE PLUS AG

Location: St. Gallen, Switzerland

“Solaris” is a new development on Rosenberg with 4 terrace houses (52 residential units) in a privileged location in St. Gallen.

Baumit insulation System: Baumit StarSystem Mineral

Baumit Materials: StarColor, ProContact, PerlaMaxima, MPI 30 Speed

Life Colors: 0458

Vitosha Apartments 2



Photos: Mihail Novakov

Architect: arch. Tsvetan Petrov, "Ivo Petrov - Architects" (IPA)

Investor: Miroslav Milorov, Vienna Building Group 2

Applicator: OrSiKa Group

Location: Pernik, Bulgaria

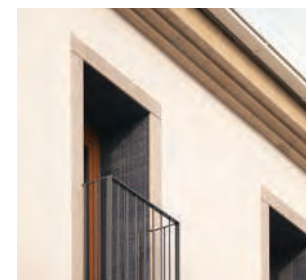
Residential buildings with underground garages, shops, and offices - staged construction. The Vitosha Apartments 2 residential complex is constructed using the Baumit External Thermal Insulation Composite System Pro and the final coating SilikatTop K1.5 in colors 0869 and 0883.

Baumit insulation System: Baumit ProSystem

Baumit Materials: SilikatTop, ProContact

Life Colors: 0869 0883

Downtown condominium



Architect: Studiobazaar Építész és Design Műhely Kft. – Ákos GYERGYÁK DLA, Barnabás KOZÁK

Investor: Private

Constructor: BGW Kft.

Location: Pécs, Hungary

During the planning of the apartment building, due to the historical environment, the architects paid special attention to the street façade. The window distribution and its rhythm continue the old tight window arrangement, but with longer windows, harmoniously fitting in with the neighboring buildings.

Baumit Materials:
DuoTop, DuoContact

Life Colors:

0879

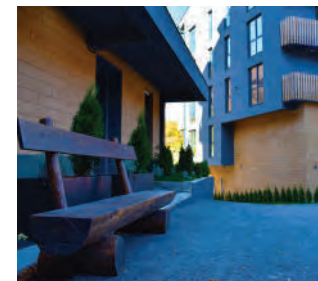
0403

Mavrovo 2 Residence



Architect: Forton
Investor: Forton
Applicator: ABZ - Bogovin: ARA GROUP
Location: Gostivar, North Macedonia

MAVROVO 2 is a modern residential complex with 150 residential units. The complex is located in the Mavrovo National Park on the slopes of Mount Bistra and next to the ski slopes. As a concept, MAVROVO 2 offers modern residential housing with low maintenance costs, is safe and easily accessible. The complex has ideal access to peace, quiet, natural beauty and the potential for an active life in Mavrovo National Park.



Baumit insulation

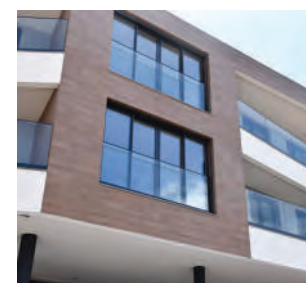
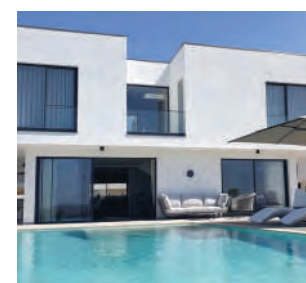
System: Baumit
ProSystem

Baumit Materials:

CreativTop, GranoporTop,
ProContact, Baumacol

Life Colors: 0883

Skycity Complex



Architect: JPS Group
Constructor: JPS Group
Applicator: Amazing Falcon
Location: Carnaxide (Oeiras), Portugal

In the Hills of Carnaxide, SKYCITY complex harmonizes architecture, design, and nature. Villas, townhouses, and apartments are integrated with landscape, river, and mountains. The design features a parallelepiped shape with continuous balconies creating a dynamic effect. Glass panels enhance visual openness. The modern design accentuates residential function.

Baumit insulation System: Baumit ProSystem

Baumit Materials: GranoporTop, ProContact

Life Colors: 0885 0019

Glasi



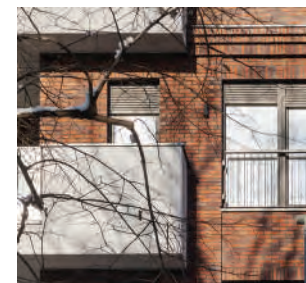
Architect: Duplex Architekten AG
Investor: Steiner AG Zürich
Applicator: Gipser.ch AG
Location: Bülach, Switzerland

From a glass factory to a family-oriented neighborhood: 520 apartments and 21 houses with versatile uses.

Baumit insulation System: Baumit StarSystem Mineral
Baumit Materials: ProContact, SupraFix

Life Colors: 0889 0149 0497

Vip Casa



Photos: Miloš Martinović

Architect: Milan Todorović

Investor: Vip Casa Invest

Applicator: Brick Inženjering

Location: Belgrade, Serbia

Residential and commercial building in the Belgrade, right next to the park Šumice. The combination of bricks and façade plaster, as well as the contrasts in the colors of the façade, give it an urban character. The proximity to one of the largest parks in Belgrade, as well as the proximity to the city center, make the location of this object particularly attractive.

Baumit insulation System: Baumit ProSystem

Baumit Materials: GranoporTop, PuraTop, PuraColor, NivoFix

Life Colors: 0897 0891

Waterfront City



Architect: Hajnal Építész Iroda Kft. –
Zsolt HAJNAL, Péter KENDELÉNYI

Investor: Biggeorge Property

Constructor: GroundUp Kft.

Location: Budapest, Hungary

Many-eyed apartment buildings overlooking the Danube, lush green promenades, offices and shops in the remaining buildings of the industrial past, curved and angular shapes, cheerful colors, proximity of the big river and the island opposite, centuries-old trees, all that give a sense of freedom.

Baumit Materials:

GranoporTop,
ProfiContact, DuoContact

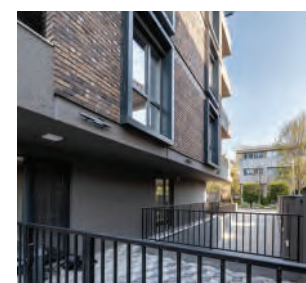
Life Colors:

0902

0742

0136

Kapitol Drezdenska



Architect: ATTIKA Arhitekti
Investor: Kapitol Inzenering
Applicator: PMG Construction
Location: Skopje, North Macedonia

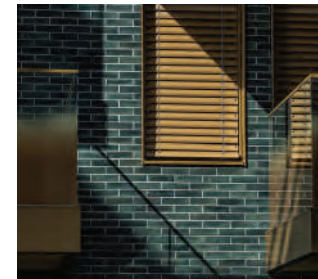
Drezdenska is a new, luxurious, four-story building, located in one of the most attractive parts of Skopje - Taftalidze. Each of the apartments is a combination of functionality and sophistication, with the appearance of the façade leaves an impression of the new modern Skopje.

Baumit insulation System: Baumit ProSystem

Baumit Materials: GranoporTop, MosaikTop, ProContact, Baumacol

Life Colors: 0904

LAX 151



Architect: UMA Architektur ZT GmbH

Investor: S+B C&P LAX 151
Immobilienentwicklung GmbH & Co KG

Constructor: Dyckerhoff & Widmann
Gesellschaft m.b.H.

Applicator: NFS Bau GmbH / Keob
Fliesen GmbH / Venit Projektentwicklung
GmbH

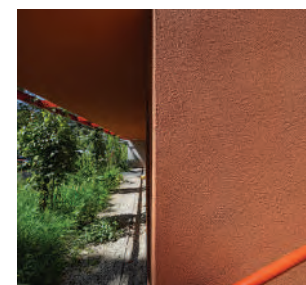
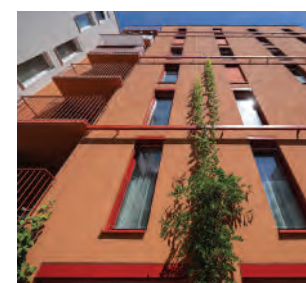
Location: Vienna, Austria

The new residential area complements the existing structure, offering commercial space and a kindergarten. Communal green spaces with trees and play areas enhance outdoor recreation. André Heller designed the open spaces.

Baumit insulation

System: Baumit
StarSystem EPS ,
Baumit CeramicSystem
Baumit Materials:
StarContact

Wohnquartier Wientalterrassen



Photos: Baunit/Christian Postl

Architect: ARGE KDG / Architekt
Christoph Lechner & Partner BERGER
PARKKINEN + ARCHITEKTEN ZT GMBH
Investor: WBV-GPA Wohnbauvereinigung
für Privatangestellte GsmBH
Constructor: Strabag AG
Applicator: Kölbl GesmbH
Location: Vienna, Austria

The Residential Quarter Wientalterrassen is guidepost for social and sustainable housing construction. It's a urban building block focusing on energy self-sufficiency (nearly 100 % renewable energy) and also allows for future-orientated, ecological architecture which has since been honoured with the ÖGUT Environmental Award.

Baunit insulation
System: Baunit
StarSystem Mineral
Baunit Materials:
SilikatTop, PuraTop,
GranoporTop,
GranoporColor

Bene



Architect: KREMMEL - Unterhaching

Investor: ZIMA Holding AG

Constructor: Alltech Bau GmbH

Location: München, Germany

The exclusive apartment block in Grünwald / Harlaching perfectly embodies the timeless elegance of the Munich lifestyle and is an example of high-end living.

The design of the façade was accomplished with a focus on classic style elements and a successful combination with modern features.

The insulation of the façade shows that not only aesthetic aspects, but also efficient insulation has been factored in to ensure maximum energy efficiency and home comfort.

Baumit insulation

System: Baumit
StarSystem Mineral

Baumit Materials:
SilikatTop, StarContact
Light

Lias quarter



Architect: Merz Objektbau GmbH
Investor: MOE LIAS Aalen GmbH
Constructor: B. Heiter GmbH
Location: Aalen, Germany

The LIAS quarter in Aalen serves as a model for the upcoming development area 'Am Tannenwäldle.' It features 14 premium townhouses, eight penthouses, and 18 residential units with scenic city views. A special feature involves two plaster structures: brushed and rolled, posing challenges in detail clarification, especially around window sills and base connections.

Baumit insulation
System: Baumit
StarSystem Mineral
Baumit Materials:
StarColor, Multi MC 55 W,
SupraFix, ScheibenPutz
SEP

Living & Community



Architect: Architekturbüro Müller + Huber;
Architekturbüro Bähr; Grossmann Group; Lehmann
Architekten GmbH; Architekturbüro Seebacher-Braun
Investor: Rendler Immobilien GmbH & Co. KG
Constructor: Sefer GmbH; Malyschew Kryeziu GmbH;
Berger Maler und Ausbau GmbH; S&V Bau GmbH; BSW
Maler Handwerk
Location: Oberkirch, Germany

The Oberkirch development features 5 buildings with distinct façade designs. With 107 units, medical offices, and offices, it spans 2.4 hectares. Challenges included unique window designs, fire barriers, and rounded window corners. Each building blends modern materials with traditional craftsmanship, creating a harmonious blend with the surroundings.

Baumit insulation
System: Baumit
StarSystem Mineral,
Baumit CeramicSystem
Baumit Materials:
SilikonTop, StarColor,
FlexaColor, StarContact
Light, ProContact,
SupraFix

Fredry 6 II



Architect: B2 Studio Sp. z o.o.
Investor: Spravia Sp. z o.o.
Constructor: Przedsiębiorstwo
Budowlano-Handlowo-Transportowe
Edmund Leś
Location: Kraków, Poland

The residential complex features diverse small structures, organized around communal spaces like a town square and courtyards. Despite repetitive volumes, exceptions adapt to terrain or urban needs. Materials, including brick textures, create a picturesque and cozy atmosphere amidst geometric regularity.

Baumit insulation
System: Baumit
ProSystem
Baumit Materials:
SilikonTop, MosaikTop
Superfine, ProContact,
DuoContact, NivoFix

Insta 21



Photos: Piotr Krajewski

Architect: 22ARCHITEKCI Sp. z o.o.

Investor:

Polski Holding Nieruchomości S.A.

Constructor:

CHEMOBUDOWA - KRAKÓW S.A.

Location: Warszawa, Poland

INSTA 21 is a six-story residential building renowned for its modern architecture. Situated at Instalatorów 21 Street, between Warsaw's Włochy and Ochota districts, it boasts a tranquil courtyard green space. The façade features Baumit MosaikSuperfine plaster inserts, adding to its distinctive appeal.

Baumit insulation

System: Baumit

ProSystem

Baumit Materials:

SilikonTop, MosaikTop

Superfine, ProContact,

NivoFix

Tetmajera Residence III



Architect: Kita Koral Architekci Sp. z o.o.

Investor: LOGI Sp. z o.o.

Constructor: LOGI Sp. z o.o.

Location: Kraków, Poland

Baumit insulation

System: Baumit

ProSystem

Baumit Materials:

MosaikTop Superfine,

SilikonColor, ProContact,

NivoFix

Smolna Sopot



Photos: KD Kozikowski Design/Potearchitekci

Architect: KD Kozikowski Design/
Potearchitekci

Investor: Invest Komfort Spółka Akcyjna
Sp.K.

Constructor: Invest Komfort Spółka
Akcyjna Sp.K.

Location: Sopot, Poland

Smolna Sopot, nestled within the renowned Sopot Resort area, offers a serene retreat at the edge of Tricity Landscape Park. With Japanese and Scandinavian design, it harmonizes nature and architecture using Shou Sugi Ban burnt wood finishes, green roofs, and eco-friendly materials.

**Baumit insulation
System:** Baumit
ProSystem

Baumit Materials:
EdelPutz Spezial,
StarColor, StarContact
White, NivoFix

I see Vilnius

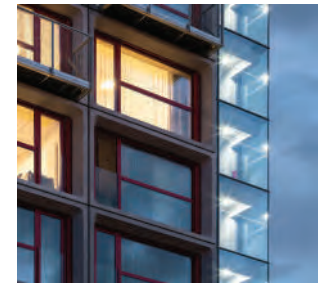


Architect: VAS, Kęstutis Kisielius
Investor: YIT Lietuva
Constructor: YIT Lietuva
Location: Vilnius, Lithuania

Residents of "I see Vilnius" don't have to choose - the rhythm of the city or the peace of home, spaces where it is good to watch how the seasons change, or squares where life is boiling. All the ways home are the shortest here. In order to experience the city in the way you do best.

Baumit insulation System: Baumit ProSystem, Baumit CeramicSystem

Domeq 2&3



Photos: Studio acht, spol. s r.o.

Architect: Studio acht, spol. s r.o.

Investor: CTP Invest, spol. s r.o.

Constructor: Vivas CZ, s.r.o.

Location: Brno, Czech Republic

Domeq 2&3 expands Ponávka's functions with modern housing for young residents. Its façade blends decorative trowel and textured plaster, adding contemporary flair. Two types of finish are used on the façade: decorative trowel resembling smooth concrete and sprayed plaster with a distinctive texture, divided by horizontal notes.

Baumit insulation

System: Baumit ProSystem Mineral

Baumit Materials: CreativTop, StarTop, ProContact

Marmura Residence



Architect: ADNB Arhitectura
Investor: Prime Kapital
Constructor: Erbasu General Construct
Location: Bucharest, Romania

Marmura Residence, centrally located in Bucharest, spans 15,000 m² with 5 buildings varying in height. It offers 458 spacious apartments, 6 offices, including studios, duplexes, and apartments with balconies, loggias, or private gardens. The ultra-modern design features large glazed areas and green roofs.

Baumit insulation System: Baumit ProSystem Mineral
Baumit Materials: StellaporTop

Residential Complex NIDO 2



Architect: Grido Architektura & Design

Investor: IURIS GROUP a.s.

Constructor: ise, s.r.o.; sub-company:
LEGON s.r.o.

Location: Bratislava, Slovakia

The architecture of the houses, with its articulated structure, differentiated heights and “staggered” façade, laid the foundation for the emerging urbanism. The second phase brought a mix of functional uses to the project. A semi-public inner block with parkland was defined, while creating a parterre as an attribute of the urban class.



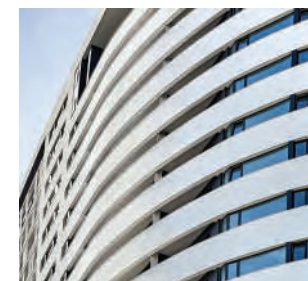
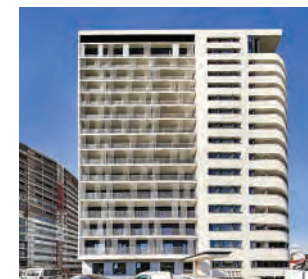
Baumit insulation

System: Baumit
ProSystem Mineral

Baumit Materials:

SilikonTop, PuraTop,
ProContact, StarContact,
RatioGlatt L, MPI 25

Avanera Suceava



Architect: SC LTFB STUDIO SRL
Investor: SC TRUTZI REAL ESTATE SRL
Constructor: SC TRUTZI CONSTRUCT SRL
Location: Suceava, Romania

In the heart of Suceava, the AVANERA project blends local charm with contemporary living, elevating architectural standards. Three 50m-high blocks offer 182 apartments each and 850 parking spaces, promising to redefine the cityscape.

Baumit insulation System: Baumit StarSystem EPS
Baumit Materials: NanoporTop

Riverside IV



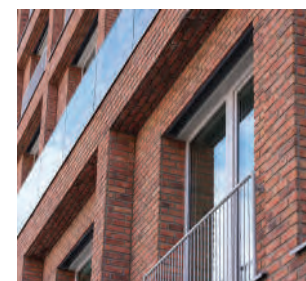
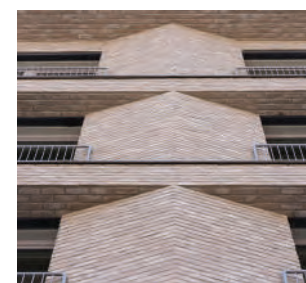
Architect: T. Balčiūno architektūros biuras, T. Balčiūnas
Investor: UAB Darnu Group
Constructor: UAB Naresta, UAB Mitnija
Location: Vilnius, Lithuania

RIVERSIDE IV marks a new chapter in Vilnius' architectural narrative. Inspired by the city's historic layers, it blends old-town charm with modern living. The quarter features green yards, river-view terraces, and a courtyard with recreational spaces.



Baumit insulation System: Baumit StarSystem EPS
Baumit Materials: StarTop

Two Houses



Architect: bevk perović arhitekti d.o.o.
Investor: Karlín Group Management a.s.
Constructor: VKLSTAV Group s.r.o.
Location: Praha 8 - Karlín, Czech Republic

The design of the façades refers both to the industrial past of the Karlín neighbourhood and to the Cubist tradition of Prague modernism. The proportions, tectonics, and treatment of the surface reflect the character of the Křižíkova street and the whole district, but at the same time, they look modern and up-to-date in spite of the use of traditional materials.

Baumit insulation
System: Baumit
StarSystem Mineral
Baumit Materials:
SilikonTop, StarContact,
ProContact

Mogilska Tower 2



Photos: B2 Studio Sp. z o.o.

Architect: B2 Studio Sp. z o.o.

Investor: Semaco Invest Group Sp. z o.o.

Constructor: Przedsiębiorstwo
Budowlano-Handlowo-Transportowe
"Edmund Leś"

Location: Kraków, Poland

Located centrally, the building harmonizes with the bustling urban landscape. Alongside MT1 tower, it stands as a defining landmark. Characterized by rhythmic repetition, it features unique design elements like sharp corners and a truncated top hosting panoramic terraces. Ground-level services seamlessly integrate with the street and terrain.

Baumit Materials:
SilikonTop, NivoFix

Reininghausstreet 80



Architect: Stoiser Wallmüller Architekten
ZT GmbH

Investor: RS80 Projektentwicklungs
GmbH & Co KG K2 Immo GmbH

Constructor: Wallner & Schemitsch
Zivilingenieure

Applicator: Leist Karl GmbH

Location: Graz, Austria

Remains of buildings from the period of promoterism, residential buildings from the 1960s, industrial buildings, single-family houses and allotment gardens form a neighbourhood with little identity. The new development has reorganised the existing urban space, urban squares and a green inner courtyard create new places to spend time.

Baumit Insulation

System: Baumit
ProSystem

Baumit Materials:

GranoporTop, ProContact

Arbo Residence



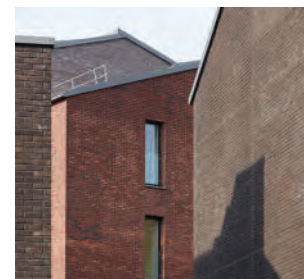
Architect: Concrete Design Solution
Investor: North Development
Constructor: Concelex Romania & Erbasu
Location: Mogosoaia, Ilfov, Romania

Arbo Residence blends comfort with exclusive design for an ideal lifestyle. Constructed with top materials and cutting-edge technology, the apartments offer elegance, durability, reliability, and exclusive design. The complex features restaurants, a supermarket, a kindergarten, a bank, and a mini mall on the main street.



Baumit Materials:
NanoporTop

Riverside III



Architect: Architektūros Linija,
G.Čaikauskas

Investor: UAB Darnu Group

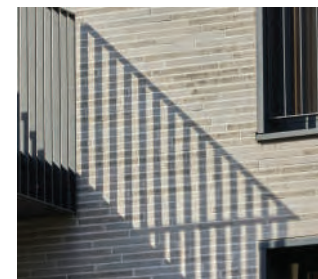
Constructor: UAB Naresta

Location: Vilnius, Lithuania

"They say that architecture is frozen music. Being here, you will feel the principles of musical composition, but most of all, harmony." - architect Gintaras Čaikauskas. Riverside III, a neighborhood harmonizing with music, reflects the area's character. A round town square fosters community life, hosting cultural events, benches, and fountains, offering residents unity and togetherness.

Baumit Insulation System: Baumit CeramicSystem

Sierakauskas 25



Architect: T. Balčiūno architektūros biuras
Investor: UAB Realinija
Constructor: UAB Keista
Location: Vilnius, Lithuania

The location of Sierakauskas 25 houses is known as a quiet city center. Here you will find everything that the best life in the city center can offer: excellent infrastructure, cultural life, comfort and prestige. The project consists of five residential buildings, each of which has 4 floors connected to an underground parking lot. The project is distinguished by a spacious yard, a children's playground equipped with walking paths. This is the first multi-apartment residential building in the Baltic States to be assessed with the international building sustainability certificate "BREEAM In-Use".

Baumit Insulation System: Baumit CeramicSystem

Riverside Flats



Architect: Architekten Ritz & Losacker GmbH

Constructor: Senal Bau

Location: Weilburg, Germany

Modern, barrier-free living near River Lahn. Two buildings house 14 units, 65-150 sqm each. Ground floors offer parking and flood protection. Harmonious blend of wood and plaster accentuates connection to nature.



Baumit Materials:

NanoporTop,
NanoporColor, MPA 68 FL
Speed, Ratio 2000

*There's only one way to understand
architecture and that's to visit
buildings.*

(Paul Randolph)



Kindergarten among Mountains



Architect: Ana Jerman, Janja Šušnjar (ARREA); Sofía Romeo Gurrea-Nozaleda, Miguel Sotos Fernández-Zúñiga (KAL A)

Investor: Municipality Bohinj

Applicator: Dema plus d.o.o.

Location: Bohinjska Bistrica, Slovenia

Bohinjska Bistrica Kindergarten is a community-driven project fostering education in environmental harmony. Strategically positioned, it promotes engagement and strengthens the connection with nature. Tradition-based sustainable construction establishes a caring environment for children and the local community.



Baumit insulation System: Baumit ProSystem

Baumit Materials: SilikonTop, ProContact

Life Colors: 0019



Photos: Luís Díaz Díaz, Miran Kambič

Market in Pécs



Architect: Gettoplan Bt. – Tamás GETTO DLA, Gergely SZTRANYÁK DLA

Investor: Municipality of Pécs

Constructor: B Build & Trade Kft.

Location: Pécs, Hungary

The Mediterranean city of Hungary was once a Roman settlement. Stylistic features of the Roman basilica and Oriental bazaar were combined. The arched, slender design with glass on one side, resembles a basilica, and the continuous interior area is reminiscent of the hustle and bustle of the bazaars.



Baumit Materials: SilikonTop, MosaikTop, DuoContact

Life Colors: 0436

Balçova Cemevi



Architect: NSMH

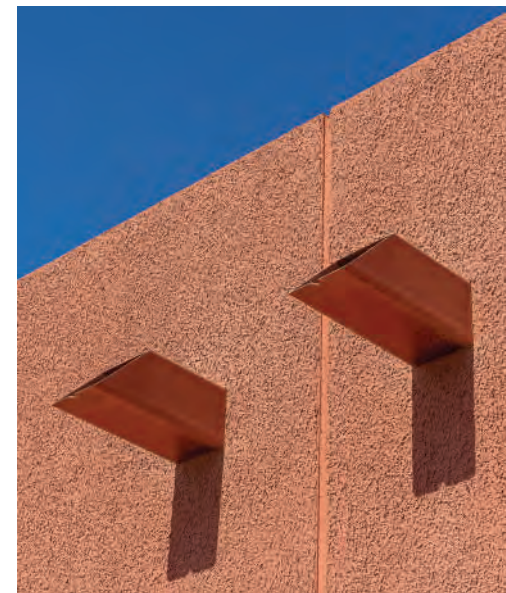
Investor: Municipality of Balçova

Constructor: Isıl Mühendislik

Applicator: Isıl Mühendislik

Location: Izmir, Türkiye

This monolithic structure, designed by following traditional indoor traces, has been built as a place of worship for Alevis, who have lived in secrecy until recently. It is produced with a focus on the fundamental characteristics of Alevi teachings.



Baumit Materials: CreativTop

Life Colors: 0572

European House of Culture *and National Minorities*



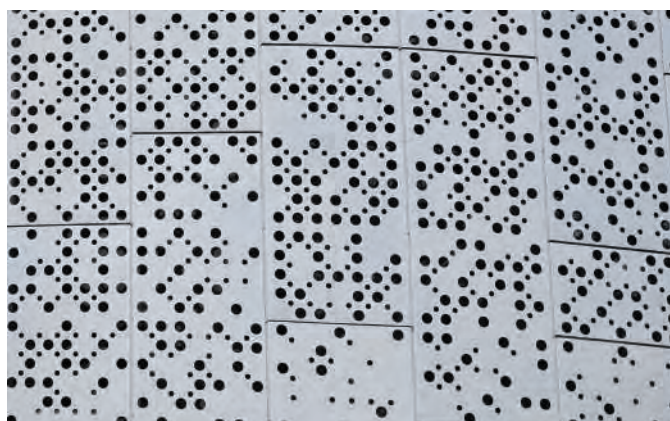
Architect: Ilma & Zejd Kobilica

Investor: Općina Centar, Sarajevo

Constructor: Džekos doo

Location: Sarajevo, Bosnia and Herzegovina

The European House of Culture and National Minorities will play an important role in the preservation and promotion of culture, history, art, social activities, tradition, but also diversity within our society, according to the announcement.



Life Colors: 0896

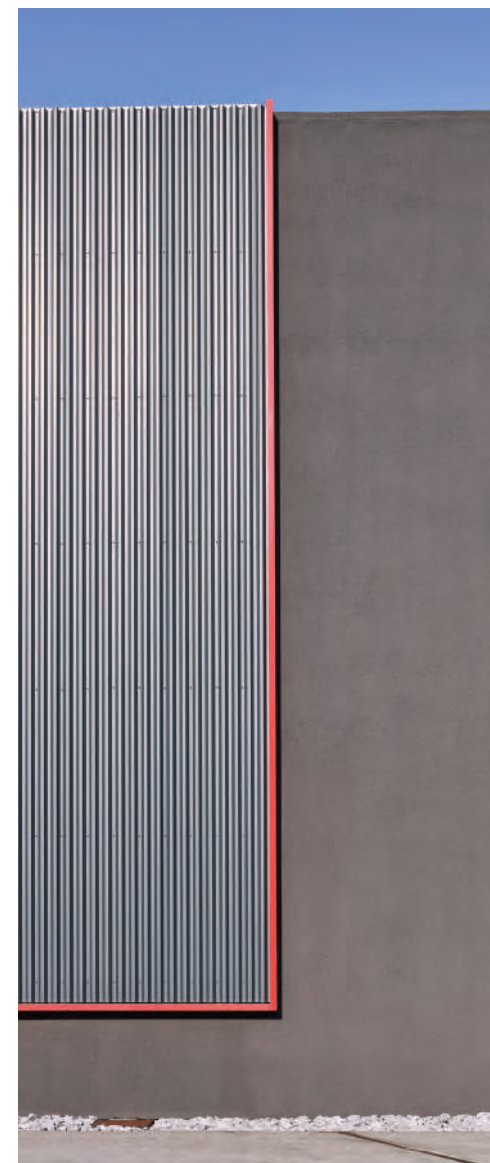
D'Agaro industrial Building



Investor: D'Agaro Trasporti

Location: Amaro (UD), Italy

The defined shapes and dark colors define the strong character of this industrial building, making it a construction integrated into nature just like the mountains in the background.



Baumit insulation System: Baumit
StarSystem EPS

Baumit Materials: PuraTop, StarContact

Student House Wilanowska



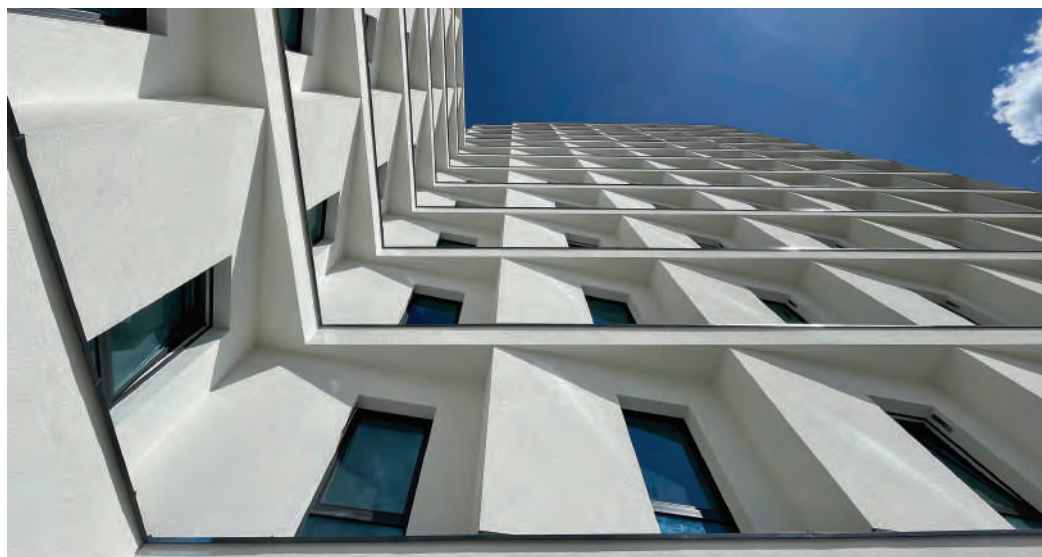
Architect: 4am Architekci s.c. Tomasz Karpiński, Arkadiusz Wróblewski

Investor: Griffin, Platforma: Student Depot Sp. z o.o.

Constructor: Kajima Poland Sp. z o.o.

Location: Warszawa, Poland

Private dormitory located in Warsaw's Mokotów district. The characteristic shape rising in steps surrounds the city square and reaches a height of eight to thirteen storeys. The façade composition is made up of smooth, off-white plastered surfaces with modular divisions.



Baumit insulation System: Baumit
StarSystem EPS

Baumit Materials: SilikatTop, ProContact,
NivoFix, MM 100



Photos: ABR

Plan G



Investor: Plan G Bau GmbH
Constructor: Plan G Bau GmbH
Applicator: Plan G Bau GmbH
Location: See / Tirol, Austria

A unique company building, planned and constructed by the owner and employees. Featuring an office on pillars with Baunit CreativTop in a rust look, blending functionality with individual design. Sales and storage areas complement the structure.

Baunit insulation
System: Baunit
StarSystem Mineral
Baunit Materials:
CreativTop, Lasur, Metallic

Life Colors: 0019

Brno Business Park



Architect: K4 a.s.

Investor: Brno Business Park, a.s.

Constructor: N.K.STAV Brno, a.s.

Location: Czech Republic

The building is a versatile office building based on the proven "H" concept. The façades of the lower and higher parts of the building are designed differently. The façade of the lower building is designed with a window-sill system in view of the conceptual affinity with the first phases of the business park. The windows are designed in aluminium in combination with a thermal insulation system and self-cleaning plaster.

Baumit insulation

System: Baumit

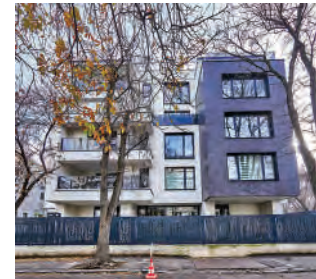
ProSystem Mineral

Baumit Materials:

StarTop, ProContact

Life Colors: 0019

Embassy of Saudi Arabia



Architect: STUDIO 10 M
Investor: Zaharia Corneliu, Zaharia Lucica
Constructor: SC Qvadra Construction & Consulting SRL
Location: Bucharest, Romania

New construction with an administrative role, with façades combined in a special design. Each façade system has a series of its own characteristics and combines appropriately with the adjacent façade systems, with the structure of the building or with the elements of other specialties. The building is located in the center of Bucharest, in an area full of greenery, surrounded by houses built at the beginning of the century.

Baumit insulation System: Baumit StarSystem Mineral

Baumit Materials: StarTop, ProContact, MPA 35, FinoGrande, FinoBello, Divina Pro, Nivello Quattro, Baumacol, MM 50, Beton B20, Solido E225

Life Colors: 0019

Leopoldov City Hall



Architect: ZEROZERO,
Prešov

Investor: City of
Leopoldov

Constructor: INVEX, s.r.o.,
TRNAVA

Location: Leopoldov,
Slovakia

The winning design by zerozero impressed the jury with its “thoughtful restraint”. The architects decided not to demolish the historic office building - they placed a library in it and at the same time designed a new town hall that creates a cultivated public space with the original one. The latter is conceived as a two-storey cube with a legible reduction of mass.

Baumit insulation System: Baumit
StarSystem Mineral

Baumit Materials: KratzPutz KRP Jura,
Sanova S, SanovaMonoTrass

Life Colors: 0019

Market in Esztergom



Architect: DKD Kft. – Kristóf DANKÓ
Investor: Municipality of Esztergom
Constructor: Volero Kft.
Location: Esztergom, Hungary

By renovating and inserting existing buildings, a new marketplace was built with shops and an indoor marketplace. This, eco-deigned building was built as an atrium, with a uniform appearance, but preserving the structure of the old listed building in the center of the horseshoe shaped space.

Baumit Materials: SilikonTop, CreativTop

Life Colors: 0019 0184 0442

SeniorResort Štěpánka



Architect: Ing. arch. David Lédl
Investor: LOOS BUILDING s.r.o.
Constructor: LOOS BUILDING s.r.o.
Location: Czech Republic

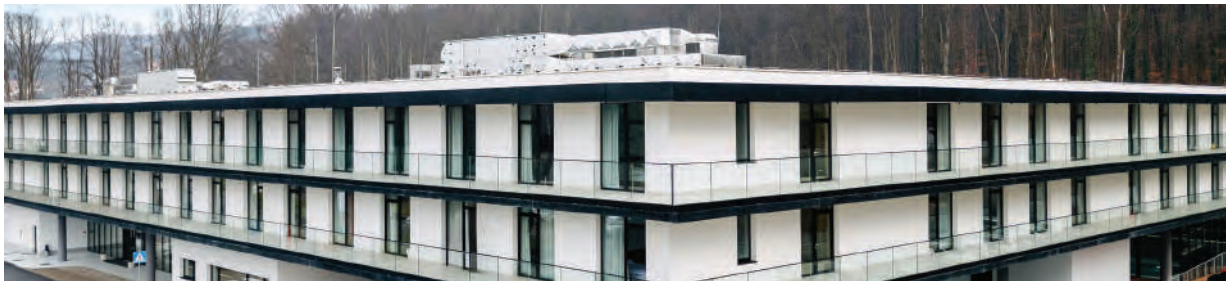
The resort adheres to contemporary standards of quality housing, prioritizing long-term sustainability. Utilizing low-energy, low-maintenance construction methods and materials. Façades blend wooden panels with ETICS plaster in white and dark hues, complementing the natural cityscape.

Baumit insulation System: Baumit StarSystem Mineral

Baumit Materials: SilikonTop, StarContact, DuoContact

Life Colors: 0019 0882

Veterans Center



Photos: Tomislav Marcijuš

Architect: prof.dr.sc. Vesna Mikić + Sanja Filep

Investor: Ministarstvo hrvatskih branitelja i Europski fond za regionalni razvoj

Constructor: Presoflex gradnja d.o.o.

Applicator: Presoflex gradnja d.o.o.

Location: Daruvar, Croatia

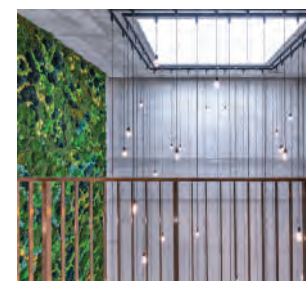
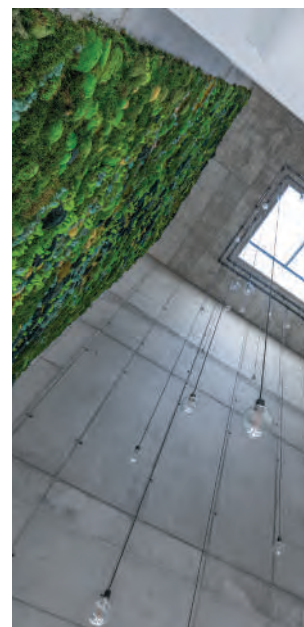
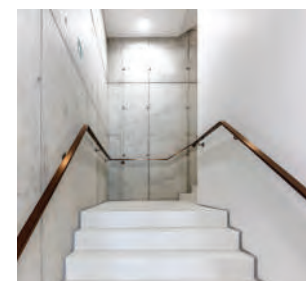
The Veterans Center in Daruvar, accommodating 200 beds, offers comprehensive support for veterans, prioritizing their physical, mental, and social well-being. Situated near the Roman Forest and Daruvar Thermal Spa, it provides an ideal setting for recovery and communal activities. Emphasizing quality and sustainability, Baumit was chosen as a reliable partner for design and material selection.

Baumit insulation System: Baumit ProSystem

Baumit Materials: SilikatTop, NivoFix, KlimaFino L, ProContact, MineralTherm

Life Colors: 0019 0894

Provincial Ambulance Station Szczecin



Architect: KONSORCJUM FIRM CH2
ARCHITEKCI SP. ZO.O. S.K. I NAAN
ARCHITEKCI SP. Z O.O. S.K.
Investor: Wojewódzka Stacja Pogotowia
Ratunkowego
Constructor: Mirbud s.a.
Location: Szczecin, Poland

The project of the Provincial Ambulance Station in Szczecin was created in 2017, construction was completed in 2023. A complex of two buildings with a shelter for ambulances and a park area was designed. Building B1 is an office building with a training and hotel area. Building B2 houses garages for ambulances, technical rooms and service stations. The facility was designed as energy-saving and modern in form.

Baumit insulation
System: Baumit
ProSystem
Baumit Materials:
PuraTop, ProContact,
NivoFix, RatioGlatt L

Life Colors: 0881

Student Depot Dormitory



Photos: MoonStudio Sp. z o.o. / Student Depot Sp. z o.o.

Architect: MoonStudio Sp. z o.o.

Investor: Projekt 18-Grupa Echo Sp. z o.o.
/ Student Depot Sp. z o.o.

Constructor: Erbud S.A.

Location: Kraków, Poland

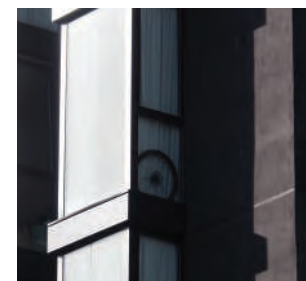
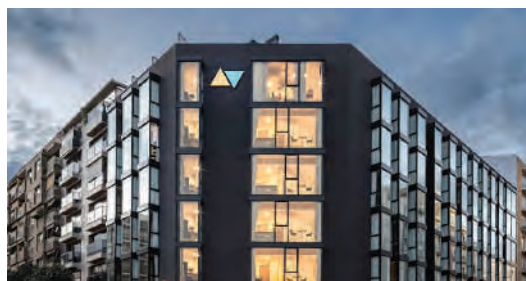
The building has the form of a prism with a trapezoidal base. The scale of the building was visually reduced by divisions on the façade. The undercuts and the recess of the façade have been highlighted with a brick and copper colour. The colors that have been used give the building lightness and blend with existing urban tissue.

Baumit insulation System: Baumit ProSystem

Baumit Materials: StarTop, PuraTop, GranoporTop, ProContact

Life Colors: 0888 0882 0403

Residencia de estudiantes Amro



Architect: Serta arquitectos

Investor: AMRO

Constructor: EDIFESA

Location: Valencia, Spain

Amro Valencia, near the University of Valencia, offers student housing while boosting the local community. With sustainability at its core, it holds BREEAM 'Outstanding', Fitwel 'Stars', and Wiredscore 'Platinum' certifications, promoting environmental responsibility.

Baumit insulation System: Baumit ProSystem

Baumit Materials: StarTop Fine, PuraColor, ProContact

Life Colors: 0893 0891

LUX - sports and entertainment hall



Photos: Projekt Plus Architekci

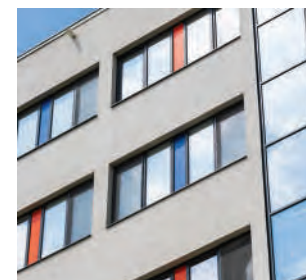
Architect: Projekt Plus Architekci Sp. z o.o. / Tomasz Borkowski, Grzegorz Tkacz
Investor: Gmina Bobrowniki, Bobrowniki
Constructor: Anbud, Będzin
Location: Rogoźnik, Poland

LUX. Inspiration by natural light. The object adopts the natural color of its surroundings at the time of day or season: orange, blue or silver. The lower part, fully glazed, reflects the surroundings, optically disappears and allows you to bring out the main idea - inspiration by natural light.

Baumit insulation System: Baumit ProSystem
Baumit Materials: PuraTop, ProContact, NivoFix

Life Colors: 0901

Regional Hospital for Active Treatment



Photos: Mihail Novakov

Architect: Arch. Tsvetan Petrov, arch. Daniela Angelova, arch. Angel Hristov; “Ivo Petrov - Architects” (IPA)

Investor: Multiprofile Regional Hospital for Active Treatment Dr. Stefan Cherkezov

Applicator: Building Comfort

Location: Veliko Tarnovo, Bulgaria

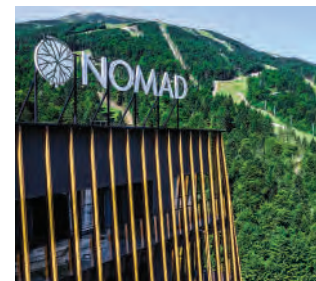
The new wing of the Multiprofile Regional Hospital for Active Treatment features a cohesive façade with Baumit ETICS Pro, GranoporTop K1.5, and GranoporColor 0909 + MosaicTop M337 paint. Its design integrates seamlessly with the existing part, emphasizing unity and functionality, while colorful window accents add visual interest.

Baumit insulation System: Baumit ProSystem

Baumit Materials: GranoporTop, MosaikTop, GranoporColor, ProContact

Life Colors: 0909

Hotel Nomad



Architect: TEAMM d.o.o. & Nox-biro d.o.o.

Investor: Birotim d.o.o.

Constructor: Hadžić Gradnja d.o.o. /

Vektor-integra d.o.o.

Location: Babin do, Bjelašnica, Bosnia and Herzegovina

When viewed from the side of the hill, the building seems to be a three-volume structure that floats over the lower, sunken floors. Wrapping balconies of all projecting volumes in repetitive vertical slats gives the voluminous structure the appearance of lightness in a natural environment.

Baumit insulation System: Baumit ProSystem

Life Colors: 0913 0881

Buffalo and grey cattle shelter



Architect: András FÜZES, László FEKE
Investor: Directorate of Körös-Maros National Park
Constructor: Futizo Kft.
Location: Dévaványa, Hungary

Built for grey cattle and buffalo, this anthropomorphic and zoomorphic complex seems to have emerged from the ground. The main entrance symbolizes two buffaloes, and the layout of the stables is reminiscent of a grey cattle horn. The complex in "the Puszta" look as if it has always been there.

Baumit Materials: SilikonTop, MPA 35

Life Colors: 0913 0916

Primary school



Photos: Žiga Intihar

Architect: Studio.A+V, d.o.o.
Applicator: Makro 5 Gradnje d.o.o.
Location: Škofije, Slovenia

The design of Oskar Kovačič Škofije primary school embodies its dual role: as an educational institution and a social space. Reflecting the Mediterranean setting, outdoor areas are integrated with indoor spaces. The school's layout, connected to a memorial park, fosters community engagement. This investment enhances local quality of life.

Baumit insulation System: Baumit ProSystem

Baumit Materials: StarTop, ProContact

Life Colors: 0926 0924

Old and new modernism



Architect: SAGRA Építész Kft. – Gábor SAJTOS

Investor: Our Lady of Hungarians
Franciscan Order Province

Constructor: LATEREX Építő Zrt.

Location: Budapest, Hungary

The most significant architectural work of Hungarian modernism is the church, monastery and parish in Budapest, built in 1934. The buildings were partially rebuilt and renovated in 2022. Next to them, a new community house was built with the same stylistic features, façade structure and color.

Baumit Materials: openTop, MosaikTop, ProfiContact

Life Colors: 0935 0019



Regio Parco Torino



Architect: Picco Architetti
Constructor: ST di George Shokralla
Location: Torino, Italy

The fusion of a student residence, a supermarket and an innovative restaurant in this building confirms the positive model of the mix of functions proposed by the nineteenth-century city.



Baumit insulation
System: Baumit
StarSystem EPS
Baumit Materials:
StellaporTop

The Firehouse



Architect: Ing. arch. Gustav Křivinka
Investor: City Lelekovice
Constructor: PSK Group, spol. s r.o.
Location: Lelekovice, Czech Republic

The Firehouse building in Lelekovice is an example of a minor structure that stands out and comes up with a high-quality, timeless solution both in terms of material and mass. The Firehouse is very sensitively set in the surrounding landscape, and despite the small scale, it does not lack pleasant dynamics. The façade combines facing masonry and a thermal insulation system with silicone plaster.

Baumit insulation
System: Baumit
 StarSystem EPS
Baumit Materials:
 SilikonTop, DuoContact

LAC



Photos: Stan Zajączkowski

Architect: arch_it Piotr Zybura

Investor: Gmina Wrocław, Zarząd Inwestycji Miejskich

Constructor: AWM BUDOWNICTWO S.A.

Location: Wrocław, Poland

The Local Activity Center is located in Maślice, Wrocław's dynamically developing district, characterised by residents highly involved in the integration and activation of all social groups. The new facility functional program was developed in a cooperation with the Neighborhood Council as a response to the rapidly shifting needs of future users.

Baumit insulation

System: Baumit ProSystem

Baumit Materials: SilikonTop, CreativTop

Oliwa 501



Architect: Grupa 5 Architekci Sp. z o.o.
Investor: Moderna Holding Sp. z o.o.
Constructor: Moderna Sp. z o.o.
Location: Gdańsk, Poland

The Oliwa 501 façade blends classic urban elements with historical references, featuring sloping roofs and rhythmic divisions reminiscent of traditional tenement houses. To integrate with the surrounding historical buildings, the structure incorporates recesses, gaps, and decorative verandas. The top floor is concealed behind a high ceramic roof, aligning with the neighboring architectural lines.



Photos: ABR

Baumit insulation
System: Baumit ProSystem
Baumit Materials: MosaikTop Superfine, ProContact, NivoFix

Stadium minimalism



Architect: Lab Arhitekti d.o.o.
Applicator: Senmed d.o.o.
Location: Maribor, Slovenia

The heating training facility in Maribor spans three floors (basement, ground, and first). The basement houses running tracks, a long jump track, and a fitness room. The ground floor comprises administrative offices, doping control rooms, athlete rooms, and a Tourist Information Centre. The tribune area includes VIP sections, referee and commentator booths. The stadium accommodates 976 spectators.



Baumit insulation
System: Baumit
StarSystem Mineral
Baumit Materials:
StarTop

Oko multifunctional building



Architect: S-projekt plus, a.s.
Investor: OBEK SERVIS a.s.
Constructor: PSG Construction a.s.
Location: Zlín, Czech Republic

The Oko multifunctional building, formerly a project institute, underwent a transformation into a modern barrier-free space with commercial areas for rent. Its façade received notable upgrades, transitioning from traditional Sorela style to a contemporary look. The addition of columns between windows enhances the building's character, contributing to its overall aesthetic appeal.

Baumit Materials:
StarTop, StarColor,
DuoContact

Studio Comploj Glassblower



Photos: Baumit/Christian Postl

Architect: BERGER PARKKINEN +
ARCHITEKTEN ZT GMBH

Investor: Private

Location: Vienna, Austria

This charming jewel shows, that sustainable construction in existing buildings is not a question of scale but feasible and affordable. Unutilised vacant space was turned back into a functional production facility - in this case a craft studio - in an urban setting.

With skilful measures, it was possible to develop something special and also adapt the buildings to modern comfort and energy standards.

Kindergarten “Farbenfroh”



Architect: Kraft + Kraft Architekten
Architektenpartnerschaft mbB
Investor: Stadt Ilshofen
Constructor: Hajdari Stuckateurbetrieb
Location: Ilshofen, Germany

The kindergarten comprises five interconnected buildings: housing staff areas, multipurpose rooms, and group rooms. Access areas double as play spaces, enhancing spatial qualities. Staggered pent roofs create distinct group areas inside, aiding children's orientation. Skylight strips provide light and ventilation, while the color scheme mirrors the clear functional structure, aiding navigation.



Baumit Materials:
Classico SEP, UltimoColor,
ProContact, FlexProtect,
MPA Sockel 62 LS, MPA
67 SL

*Never demolish. Always transform,
with and for inhabitants.*

(Anne Lacaton)



CATEGORY
***Thermal
Renovation***

CUS in the Old Gasworks



Architect: Projekt Plus Architekci Sp. z o.o. / Tomasz Borkowski, Grzegorz Tkacz

Investor: Miasto Zabrze, Powstańców Śląskich 5-7, 41-800 Zabrze

Constructor: Robirex Gliwice/ Częstobud Częstochowa

Location: Zabrze, Poland

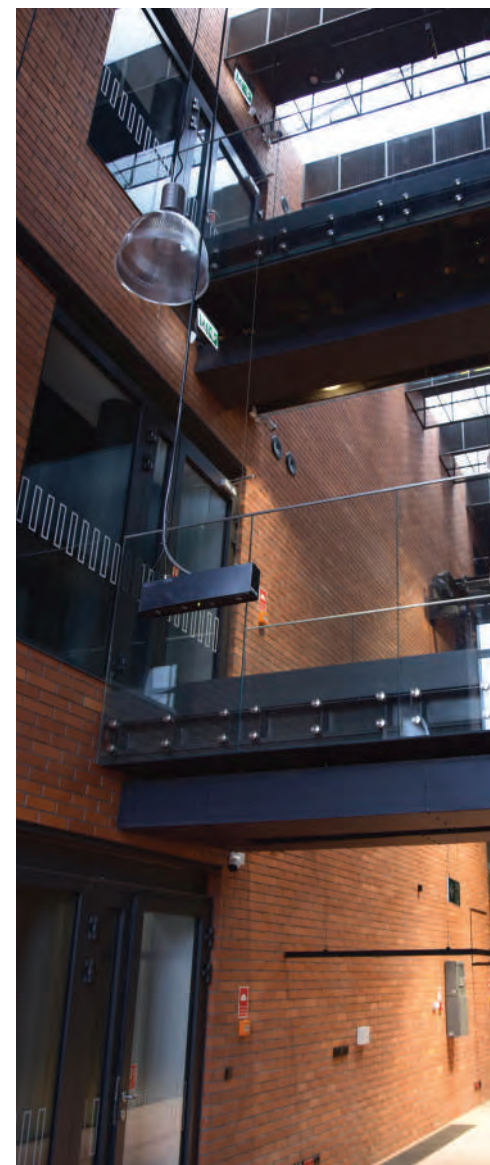
CUS in the historic Zandka estate in Zabrze, unique on a national scale. The sculptural character of the beautiful crafted brick façades of the old gasworks building goes through the interior. A stone bas-relief of Tyche is an idea of the caring mission of the building for the inhabitants of the city.



Baumit insulation System: Baumit ProSystem

Baumit Materials: CreativTop, ProContact, Klinker S, KlinkerFuge

Life Colors: 0019



Photos: Projekt Plus Architekci

House A-2



Architect: Stephan Buerger, Demetra Katsota, Maria Chassioti, Georgios Kourakos, Klelia Siska

Investor: Private

Location: Paros, Greece

On Paros Island, degraded rental studios transformed into holiday residences, respecting Cycladic architecture and natural landscape. Cubic volumes with outdoor spaces, eco-friendly materials. Each building has private spaces on ground level, common areas with panoramic views upstairs. Outdoor pergolas provide shaded areas, blending seamlessly with landscape.



Baumit insulation System: Baumit StarSystem EPS

Baumit Materials: StellaporTop, StarContact

Life Colors: 0019



Photos: Yiorgis Yerolymbos

Albeniz



Architect: Ruiz Barbarin Arquitectos - Antonio Ruiz Barbarin

Investor: Silicius Real Estaet Socimi S.A.

Constructor: Espirea - Reval

Location: Madrid, Spain

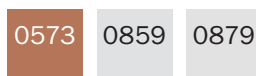
This restoration project is not a normal project, it is a unique project for Madrid, either a luxury hotel with a theatre inside or a theatre within a hotel. The challenges have been complex, as protected architectural elements (such as the protected façades) are added to the BIP (Bien de Interés Patrimonial) protection of the theatre, an almost thousand-seat theatre surrounded by a luxury hotel, each with its own peculiarities, needs, and regulations.



Baumit insulation System: Baumit ProSystem

Baumit Materials: NanoporTop, CreativTop, GranoporTop

Life Colors: 0573 0859 0879



Photos: Imagen Subliminal

House Center



Architect: ARHITEKTOR LTD Skopje

Investor: Private

Applicator: PMG Construction

Location: Skopje, North Macedonia

Built in the 1930s in neoclassical style, this house hosted eminent families and served as a British consulate. Surviving the 1963 Skopje earthquake unscathed, it's now undergoing extensive renovations while retaining its cultural and historical significance.



Baumit insulation System: Baumit StarSystem EPS

Baumit Materials: NanoporTop, StarContact, KlimaWhite, KlimaFino, KlimaColor, MPA

Life Colors: 0879



Delambre Joncours



Architect: Faun Architecte

Investor: Nantes Métropole Habitat

Constructor: Inoviso

Location: Nantes, France

Rehabilitation of 216 social collective housing units spread over 5 R+4 buildings in a very urban location. For the renovation of “street” façades we offer bricks for the base (terracotta brick) and a finishing coating on the current floors, thus we offer a smoother façade which reveals a horizontal and vertical frame.



Baumit insulation System: Baumit
StarSystem EPS, StarSystem Ceramic
Baumit Materials: SilikonTop



Photos: Marianne Liegeois

Moxy Kaunas Center



Architect: G. Natkevičius ir partneriai

Investor: UAB Tala

Constructor: UAB Mitnija

Location: Kaunas, Lithuania

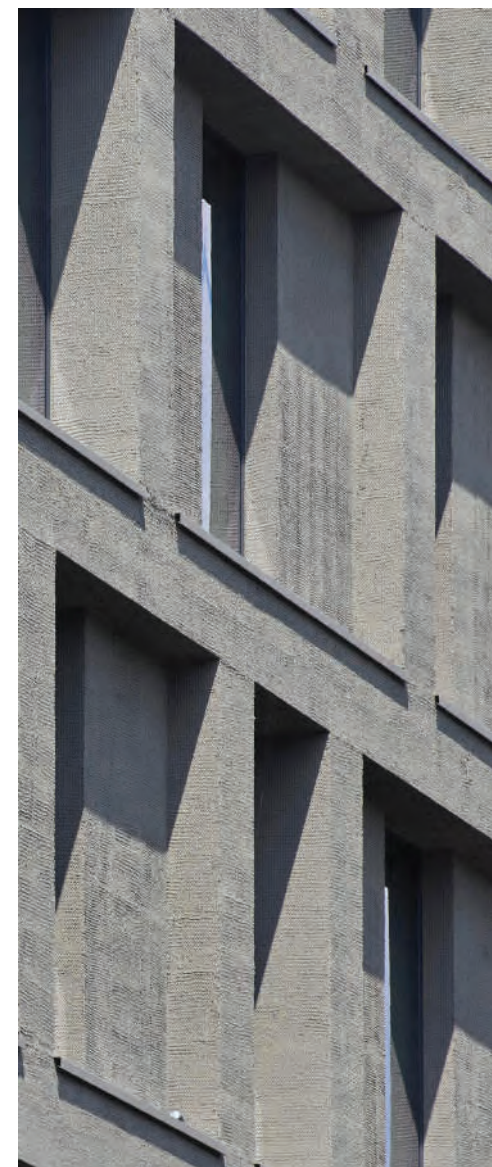
Inspired by interwar architecture, this building in Kaunas echoes its stylistic elements with rounded façades, decorative pilasters, and a textured plaster finish reminiscent of old buildings. The design creates a dialogue with the city's architectural heritage while incorporating modern elements.



Baumit insulation System: Baumit

StarSystem EPS

Baumit Materials: NanoporTop



Vladete Kovačevića



Architect: Autorski atelje Spajić

Investor: BONIS NYC 5 d.o.o.

Constructor: GM Dekor Fasade

Applicator: Zoran Simić

Location: Belgrade, Serbia

During the thermal renovation, and the extension of the house Baumit materials of the highest quality were used. With the Baumit open façade system, the highest level of vapor permeability was achieved, along with improved thermal insulation properties. Baumit CreativTop as well as FineTop special façade plasters for creative and especially smooth structures on the façade were used on the façade details, in combination with natural stone and marble.

Baumit insulation System: Baumit openSystem

Baumit Materials: SilikonTop, CreativTop, FineTop, SilikonColor, openContact, openTherm

Life Colors: 0014 0016

Family House Aravaca



Constructor: SIO LORENZO ROSARIO
DECORACIÓN SL

Location: Madrid, Spain

Renovating a two-story single-family house in Aravaca, Madrid aimed at aesthetically refreshing the original exposed brick façade while enhancing insulation and energy efficiency. Baunit ProSystem with CreativTop Pearl 0.5 in white was chosen to contrast with slate roofs and black carpentry.



Baunit insulation

System: Baunit
ProSystem EPS

Baunit Materials:
CreativTop, SilikonColor,
ProContact

Life Colors: 0019

Shopping Center Centrál



Architect: Slovak Medical Company, a.s.,
Prešov, Duchnovičovo nám. 1

Constructor: GMT development, s. r.o.,
Prešov, Kúpeľná 3

Location: Prešov, Slovakia

The two-storey Centrál Shopping Centre in Prešov was designed by architect František Souček in the 1960s in the spirit of functionalist architecture with an atrium inside the ground plan. The reconstruction consisted of insulation of the façade and a flat roof, while respecting the principles of the original architecture.

Baumit insulation

System: Baumit
ProSystem

Baumit Materials:

Baumit Materials:
SilikonTop, SilikonColor

Life Colors: 0019

Museum DAV



Architect: Ing. arch. Martin Čonka, Senica
Investor: The city of Senica
Constructor: PALKOVIČ - SK, s.r.o., Hlboké
Location: Senica, Slovakia

The building was tastefully reconstructed taking into account the architectural principles of the original author of the building, architect Peter Brtko, who received the Emil Belluš Award for his life's work. The former building of the DAV group is located in the city park in Senica and is used as a cultural and social space and community centre.

Baumit insulation
System: Baumit
 StarSystem Mineral
Baumit Materials:
 SilikonTop

Life Colors: 0019

Multifamily Mydlářka



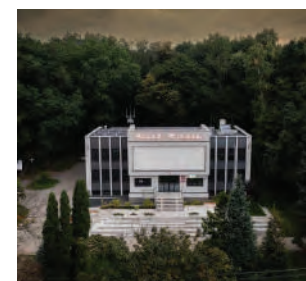
Architect: Private
Investor: Private
Constructor: ProNobis s.r.o.
Location: Czech Republic

The reconstruction of the façade of an apartment building in the Dejvice district of Prague is based on a combination of classic EPS insulation and fire belts made of mineral wool. The surface treatment consists of premium StarTop Fine plaster and standard SilikonTop silicone plaster. The renovation is sensitively set into the existing development of years gone by and does not detract from the surrounding area in terms of its appearance and materials.

Baumit Materials:
SilikonTop, StarTop Fine,
DuoContact

Life Colors: 0019

Wojkowice City Hall



Photos: Tomasz Borkowski

Architect: Projekt Plus Architekci
Sp. z o.o.

Investor: Urząd Miasta Wojkowice

Constructor: F.H.U. Fest Bud

Location: Wojkowice, Poland

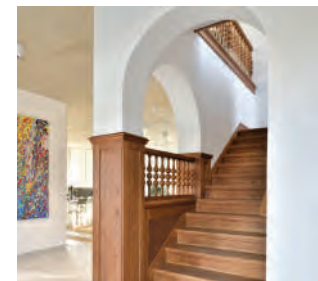
The building is renovated in relation to the architecture of the 1960s, respecting its original form. The inscription above the entrance refers to the years when the building was built. A huge window on the south side covered with a movable blind with an engraving of trees according to setting- park.

Baumit insulation System: Baumit
ProSystem

Baumit Materials: SilikonTop, ProContact

Life Colors: 0019 0891

Villa dr. Juvan



Photos: Matej Lozar

Architect: Styria arhitektura d.o.o.

Applicator: Dekor plesk d.o.o.

Location: Maribor, Slovenia

The Juvan Villa, designed by architect Maks Czeike in 1902, underwent a complete refurbishment, preserving its original exterior and interior staircase. Now housing IT company premises, the renovated building features an open and airy interior with glass walls.

Baumit insulation System:

Baumit StarSystem

Baumit Materials: CreativTop,
StarContact Light White, MultiWhite

Life Colors: 0196 0199

Renovation of a Fishing shop



Architect: Éva LUX, Zsolt SOMODY

Investor: Private

Constructor: Viktor SLOMINSZKY

Location: Esztergom, Hungary

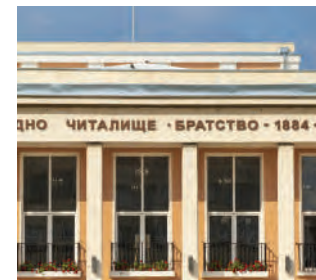
Renovation of the façade of an old building in a heritage environment with thermal insulation and replacement of windows and doors. The plinth and the framing of the openings are limestone. The high wall section above the windows was reduced optically by using a white strip.

Baumit Materials: DuoTop

Life Colors: 0312 0319



Community Center



Photos: Mihail Novakov

Architect: Arch. Dancho Rushev, "Gravity Design"

Investor: Pavlikeni municipality

Applicator: Eko Tradex Group

Location: Pavlikeni, Bulgaria

The building, situated in Pavlikeni's central square, underwent renovation as part of the "Reconstruction, Renovation, and Gasification of the Community Center" project. Thermal insulation with Baumit's system and final coatings in harmonized colors enhance its significance as a cultural institution.

Baumit insulation System: Baumit StarSystem EPS

Baumit Materials: StarTop, GranoporTop, MosaikTop, StarContact White, ProContact, openTherm

Life Colors: 0566 0198 0019

HEC administrative building



Photos: Borislav Danchov

Investor: Hydroenergy Company JSC
Applicator: Hydroenergy Company JSC
Location: Pokrovnik, Bulgaria

The façade of the administrative building "HEC" is constructed using the Baumit External Thermal Insulation Composite System Pro, final coatings SilikonTop K1.5 in colors 0833, 0698 and MosaikTop in color M326.

Baumit insulation System: Baumit ProSystem

Baumit Materials: SilikonTop, MosaikTop, ProContact

Life Colors: 0698 0833

Motobécane



Photos : A+M Architecture

Architect: A+M Architecture

Investor: Pantin Habitat

Constructor: Socateb

Location: Pantin, France

The Motobécane thermal renovation project aimed to honor the site's history as a former Motobécane moped factory. By extracting colors from Motobécane bodies, the façades were uniquely composed, enhancing a sense of belonging and paying homage to the area's past.

Baumit insulation System: Baumit StarSystem Mineral

Baumit Materials: NanoporTop

Life Colors: 0761 0321 0401

Kings Knoll



Photos: Sean Higgins

Constructor: Elliston Steady and Hawes Build Ltd

Location: Woodbridge, Suffolk, United Kingdom

As mentioned above this is a Listed Property so it was important in keeping some of the Characteristics of the Property.

To do this once the Baunit System had been installed we then had to create all the Heads of Windows to pass Architects Specifications, which we achieved.

Baunit insulation

System: Baunit StarSystem EPS

Baunit Materials: SilikonTop, StarContact

Life Colors: 0879

Student dormitory N



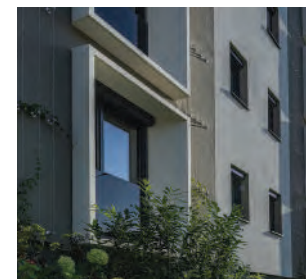
Architect: Euroing d.o.o. Bihać
Investor: Ministarstvo komunalne privrede, infrastrukture, prostornog uređenja, građenja i zaštite okoliša KS
Applicator: EKOTEH doo
Location: Sarajevo, Bosnia and Herzegovina

The thermal renovation of the Student dormitory in Sarajevo aimed to enhance energy efficiency as part of a broader initiative for public buildings. Constructed in the 1970s during the city's expansion phase, it accommodates 960 beds alongside various amenities.

Baumit Insulation System: Baumit ProSystem

Life Colors: 0899 0894

WHA ÖBB



Architect:
Architekturbüro DORN ZT
GmbH

Investor: ÖBB
Infrastruktur AG

Applicator: Lederer-
Grabner Baugesellschaft
mbH

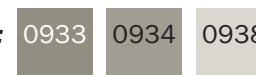
Location: Vienna, Austria

The building in Villach, constructed around 1950 as a simple, purist residential building, was completely renovated with a focus on sustainability and energy efficiency. The green façade of the residential building is an eye-catching feature that not only enhances the cityscape, but also protects against extreme weather conditions and helps to save energy and heating costs.

Baumit insulation System: Baumit
StarSystem EPS

Baumit Materials: SilikonTop, SilikonColor

Life Colors: 0933 0934 0938



The Holly



Photos: Kurt Hörbst

Architect: WGA ZT GmbH

Investor: Lilihill DevCon GmbH

Applicator: Hoffmann Fassaden GmbH

Location: Klagenfurt, Austria

The new uses and the striking façade design create a new centre point in this highly frequented area. In the course of the refurbishment, the façades were renewed, creating a contemporary appearance. The generous openings ensure that the building is well lit and create a strong relationship between the interior and exterior spaces. The renovation will make “The Holly” a new eye-catcher on Heiligengeistplatz and a landmark in the city centre.

Baumit insulation

System: Baumit

StarSystem EPS

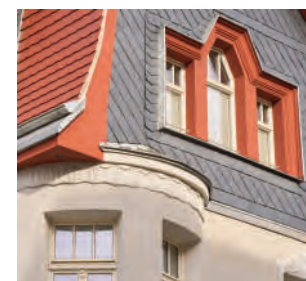
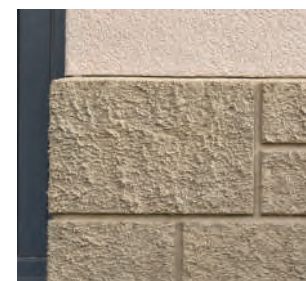
Baumit Materials:

GranoporTop, CreativTop,

FineTop, StarColor,

SilikonColor, Metallic

Charming residential atmosphere



Investor: Pluntke & Schubert
Grundstücksgemeinschaft
Constructor: Sinot Bau GmbH
Location: Pegau, Germany

The property reflects "Heimatstil and Reformarchitektur" of 1910, underwent façade reconstruction in line with heritage norms. Damage necessitated old plaster removal, replaced with HR range plaster matching texture and color. Stucco elements were secured and recreated. Sanova restoration plasters addressed salt-related issues sustainably, while Baumit KP 37 lime machine plaster ensured a healthy indoor environment.

Baumit insulation
System: Baumit
StarSystem Mineral
Baumit Materials:
StarColor, SanovaColor,
Multi MC 55 W, Multi
HM 50, Sanova SP Grey,
KlimaLight

II Secondary School



Architect: Przedsiębiorstwo Handlowo-Usługowe Taros Tadeusz Rostkowski

Investor: Gmina Miasta Gdyni

Constructor: Polska Inżynieria Artur Klejna

Location: Gdynia, Poland

The building of the Secondary School No. 2 is one of many examples of the modernist style in the architecture of Gdynia in the interwar period.

Baumit insulation

System: Baumit ProSystem

Baumit Materials: StellaporTop, ProContact

Glass School



Photos: andruk

Architect: PH Taros Tadeusz Rostkowski
Investor: Urząd Miasta Gdynia
Constructor: PHU Frontex Tomasz Dyczj
Location: Gdynia, Poland

Built in 1957 in Gdynia's new downtown, Primary School No. 14 gained fame for its bold design, earning the nickname "glass school" due to its airy and functional layout. Located at Władysława IV Street 54, it quickly became an admired landmark for its innovative architecture.

Baumit insulation System: Baumit ProSystem
Baumit Materials: SilikonTop, ProContact, NivoFix

Kindergarten Pagnacco



Architect: Arch. Giulio Moras
Investor: Comune di Pagnacco
Constructor: Alpina Costruzioni Srl
Applicator: Alpina Costruzioni
Location: Pagnacco (UD), Italy

Liveliness and cheerfulness are the watchwords of this building. Color and shapes create the ideal harmony for this area entirely dedicated to children and their airiness.

Baumit insulation
System: Baumit ProSystem
Baumit Materials: GranoporTop, ProContact

Nemunas Park



Architect: Kančo studija, G.Kančaitė
Investor: Windowsa
Constructor: Windowsa
Location: Prienai, Lithuania

The conversion of the Prienai Special School into modern apartments aimed to offer high-quality living in harmony with nature. Preserving the existing structure, the building now features enlarged windows for ample light, adapted floor plans, and a façade design reflecting the original window layout, with added loggias and balconies.

Baumit insulation
System: Baumit ProSystem
Baumit Materials: MosaikTop

Farsetti Art Gallery



Architect: Studio Arch. Bernardi, Cortina (BL)

Constructor: Fontana Srl

Location: Cortina (BL), Italy

The redevelopment of this façade has brought new light to the classic and original appearance of this building, which hosts an elegant art gallery, some apartments and a large underground car park.



Baumit insulation

System: Baumit StarSystem EPS

Baumit Materials:

StellaporTop, ProContact White, StarContact White, Pre, Primo Sicuro

Ecole Alain Fournier



Photos: Marianne Liegeois

Architect:
Faun Architecte
Investor:
Nantes Métropole
Constructor:
Paul Turpeau
Location: Nantes, France

The project is part of an urban project with the creation of an urban green network based on existing public spaces. The nursery extension and restoration are seen as the continuity of these green “strips” spreading around the nursery school. The façades have a brick base, while the floors receive an ITE and a paint finish. The new extensions are entirely made of brick, establishing a balanced dialogue with the existing. The brick, with its scale and nuanced hue, characterizes the school as a domestic and sustainable establishment. Its design allows for play of shadows and reliefs, adding a variety of textures to the façades.

Baumit insulation System: Baumit StarSystem EPS, StarSystem Ceramic
Baumit Materials: SilikonTop

Château des Rentiers



Architect: AVP architectes /
Vincent Poirier architecte
Investor: Paris Habitat / Direction
Territoriale Sud-Est
Constructor: SOCATEB
Location: Paris, France

The guidelines of this 1969 building were preserved with different proportions, improving its elegance: an alternation of ensembles composed of loggias and the common circulations windows coated with Glitter and ensembled only made of loggias covered in white.

Baumit insulation
System: Baumit
StarSystem Mineral
Baumit Materials: Glitter,
StarTop, NanoporTop Fine

Casale Resana



Investor: Sig. Antonio Bianchi
Location: Resana (TV), Italy

The renovation of this farmhouse in the Treviso countryside has given the building a modern and homogeneous design, maintaining original elements such as the exposed stone of the fireplace.

*Architecture should speak of its time and
place, but yearn for timelessness.*
(Frank Gehry)



Park Avenue



Architect: LUCA Architecture

Constructor: Ecofix Ltd

Location: Sandymount, Dublin, Ireland

The vaults and arched steel windows and white brick are a nod to old coachhouse architecture and materiality. One of the vaults at ground floor wraps around the side of the house and gives a glimpse to the front of what lies behind. Our brief has covered the project from inception through planning to construction and a full interiors service.



Baumit insulation System:
Baumit StarSystem Mineral

Baumit Materials: SilikonTop, CeramicFix

Life Colors: 0019

Bulgarian Academy of Sciences



Architect: arch. Milena Krachanova, Aglika Ikononova, eng. Marin Valchev,
eng. Rosen Yovchev

Investor: Bulgarian Academy of Sciences

Applicator: EM Building 2020 Association

Location: Sofia, Bulgaria

The implemented project for conservation-restoration activities on the façades and artistic elements of the Central Building of the Bulgarian Academy of Sciences preserves its physical structure and restores its authentic brilliance, accentuating its presence in the night silhouette of the historical center of Sofia through artistic lighting.



Baumit Insulation System: Baumit
StarSystem Mineral

Baumit Materials: PuraTop, MosaikTop,
PuraColor, MultiWhite, MultiRenova

Life Colors: 0019 0214 0213

Children's Hospice Caritas



Architect: Biuro Architektoniczne “GADOMSCY” Piotr Gadomski

Investor: CARITAS Archidiecezji Warmińskiej

Constructor: Przedsiębiorstwo Budowlane “Skorłutowski” sp.j. Jerzy i Ewa Skorłutowscy

Location: Olsztyn, Poland

Originally built in 1883–1884, the facility served various functions over time. Initially an officers’ casino, it later housed a guard-house during WWI, then converted into apartments for servicemen post-war. Despite enduring a fire in 2015, it now operates as Caritas children’s hospice since 2021. Renovations encompassed structural and installation updates while preserving historical elements like tiled stoves and ceiling moldings. The building’s footprint expanded to accommodate new spaces, including a main hall and chapel. Its distinctive façade blends old brick with modern ceramics, reflecting its military heritage while embracing contemporary design.



Baumit insulation System: Baumit ProSystem

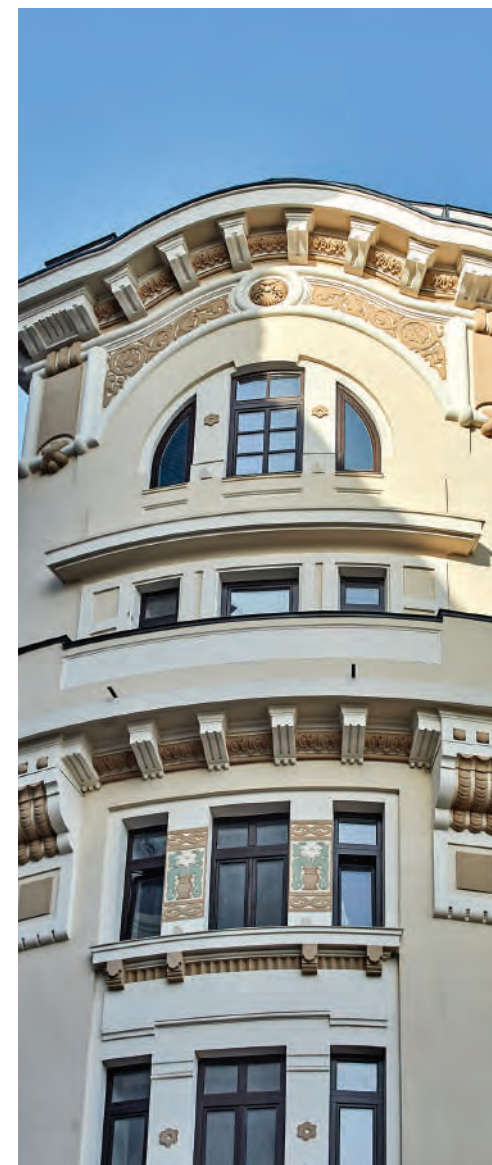
Baumit Materials: StellaporTop, DuoContact, NivoFix, MPI 25, TrassZement, TrassitPlus

Royal Palace Hotel



Architect: VMM Architects Associates
Investor: Hofmann Autotech Romania
Constructor: Hofmann Construct
Location: Bucharest, Romania

*Located on Brezoianu str corner with Constantin Mille , “Royal Palace” Hotel, is a eclectic building with Art Deco elements and a radical interwar architectural intervention on a older building from 1880 -1885. In this building after 1892, functioned the School of Romanian Architects Society.
The building was redesigned by the French architect Ernest Dorneaux in 1927.*



Baumit Materials: NanoporColor

Humboldt-Universität Berlin



Architect: Ingrid Hentschel, Prof. Axel Oestreich Architekten BDA

Investor: Senatsverwaltung für Stadtentwicklung und Wohnen

Constructor: Universal Putz GmbH

Location: Berlin, Germany

The Prinz-Heinrich-Palais, Humboldt-Universität Berlin's main building, built 1748, a historical monument. Renovation repairs damage, enhances fire safety, restores Baroque style with techniques like plaster replication, rail construction. Upper façade grooved plaster, lower ashlar plaster, preserving historical structure, color. Joints meticulously worked with stucco tools. Slurry coat, glaze maintain historical appearance.



Baumit Materials: MP 69,
KalkzementPutz KZP 65,
MultiFine RK 70 N

Otto Wagner Schleusengebäude



Architect: Metz und Partner Baumanagement ZT GmbH

Investor: DHK / viadonau

Applicator: Leyrer + Graf GmbH

Location: Vienna, Austria

Former lock building, Viennese Art Nouveau gem, now MA45/Vienna Waters HQ. Façade restored to original state, balancing history with modern use. Detailed examination with Monuments Office confirmed Otto Wagner's design. Green elements to be white. Includes Schemerlbrücke, crane depot, part of Wagner's late 19th-century plan.



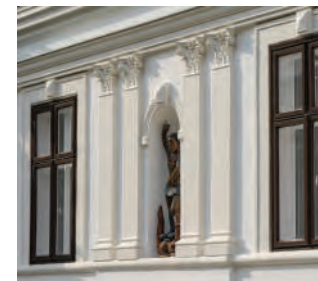
Baumit Materials: Sumpfkalk, BioKalk Color, NHL Multi, NHL Fine, NHL Manu, NHL Pre

August Senoa – Croatian Club



Architect: Péter BALÁZS,
János CSIZMADIA, Attila SZABADICS
Investor: Croatian National Self-
Municipality
Constructor: Pécsi Generál Kft.
Location: Pécs, Hungary

The listed building was built in the early 1800s in the centre of Pécs. During the renovation, structural damage, waterproofing problems and decorative plasterwork were repaired. The prominent façade plinth was restored. The light color emphasizes the sculpture in the niche.



Baumit Materials:
SilikatColor, Sanova
MonoTrass

Life Colors:

0017

0019

Protestant Church



Architect: Colorblock Kft. –
Zsolt VINCZELLÉR

Investor: Reformed Parish of Kecskemét

Constructor: Leon Bau Kft.

Location: Kecskemét, Hungary

The church was built in 1684, and over the centuries, as the congregation grew, it was enlarged in various styles and a market was added. Before the renovation, it was overgrown with vegetation, so the entire façade had to be knocked down and replastered, using Baumit materials.

Baumit Materials:
SilikatColor, KlimaColor,
KlimaGlatt

Life Colors:

0018

0019

0907

Miernicza 9



Architect: Fabjanowski Mariusz. BOB
Biuro Obsługi Budownictwa Wrocław
Investor: Expert Dom Zarządzanie
Nieruchomościami Wrocław
Constructor: STAKO Sebastian Bęś
Location: Wrocław, Poland

A historic building after a full renovation located in Wrocław, Miernicza street. The building was built in 1887 and was frequently used as a movie background. Some of the films that have been shot here include Steven Spielberg's "Bridges of Spies", "The Doll"(1997), "A Lonely Woman"(1981), "A Woman at War"(1991), "Miasto 44"(2013) and "Cold War"(2017).

Baumit Insulation System: Baumit ProSystem

Baumit Materials: SilikonTop, Mosaik Superfine, SilikonColor, ProContact, NivoFix, SanovaMonoTrass, Multi MC 55 W, Stucco Mono

Life Colors: 0018 0834 0795

Episcopal Residence



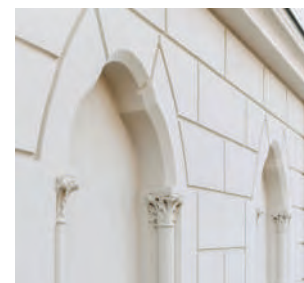
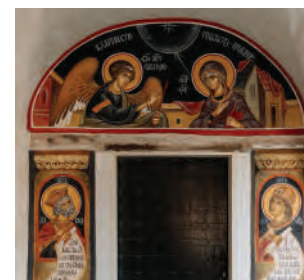
Architect: Zoran Fumić dipl.ing.arh.
KOPING d.o.o. Požega

Investor: Srpska Pravoslavna Crkva
u Hrvatskoj, Eparhija Slavonska

Constructor: DOLN d.o.o. Nova Gradiška

Location: Pakrac, Croatia

In Pakrac, an old episcopal palace by the Pakra River, witnessed history. Despite wear, the community united to restore it. With Baumit products, they preserved its heritage, using old materials and techniques. The restoration made the palace both authentic and energy-efficient.



Photos: Tomislav Marcijuš

Baumit Materials:
SilikonColor, NHL Manu,
MultiStar Fine

Life Colors: 0167

Grand Hotel Savoy



Architect: Intramuros Építész Kft. –
Botond Zsolt DOBOS DLA

Investor: Vantap Hungária Kft.

Constructor: Torrione Kft.

Location: Budapest, Hungary

It was originally built in 1897 as a circular apartment block, shortly afterwards it was converted into a hotel, then a dormitory, and stood empty for decades. Its reconstruction was completed in 2022, the two street façades and also the interior one were renovated giving it a more modern look.



Baumit Materials:
openTop, SilikonTop,
SilikatTop, openContact,
openTherm

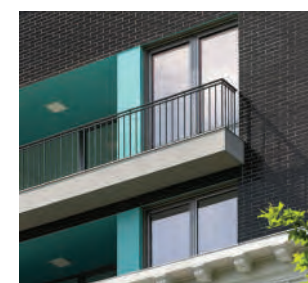
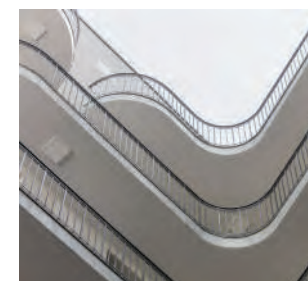
Life Colors: 0889

Old and Modern Corner House



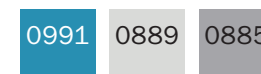
Architect: Intramuros Építész Kft. –
Botond Zsolt DOBOS DLA
Investor: Vopi-Mester Kft.
Constructor: BEST CENTRUM Kft.
Location: Budapest, Hungary

Dark floors were built over the white walls of the neoclassical façade. The original projecting cornice helps to separate the different parts. The varied openings, projecting balconies and recessed loggias with white and turquoise plastered surfaces are decorative elements from the 21st century.



Baunit Materials:
SilikatTop, StarContact,
Baumacol FlexTop

Life Colors:



Bolesława Śmiałego 17



Architect: GRUPA MIASTO

Investor: Wspólnota Mieszkaniowa ul. Bolesława Śmiałego 17

Constructor: JK Systemy Budowlane Kania & Jaroszewski

Location: Szczecin, Poland

The tenement house and outbuilding at 17 Bolesława Śmiałego Street, in Śródmieście Szczecin, are listed in the Municipal Register of Monuments. Situated on the corner near Stefana Żółkiewskiego Street, renovation concluded in 2022. Façade colors were chosen from fragment tests. Extensive renovation included façades, doors, and windows.

Baumit insulation

System: Baumit ProSystem

Baumit Materials: SilikonColor, Multi MC 55 W, MPA 66 LL plus

Villa Wojska Polskiego 68



Architect: Orłowski Szymański Architekci
Investor: Windclub Sp. o.o.
Constructor: Perito-Mct Maciej Szmigiel
Location: Szczecin, Poland

The ornaments decorating the façade have been refreshed with attention to detail. The building's shape has been supplemented with a modern, glazed part that works on the principle of contrast. Thanks to this procedure, the villa is visually duplicated, reflected in the glass façade. The windows were recreated and inserted in accordance with their historical shape. The roof geometry has been changed. A glass element was created on it.

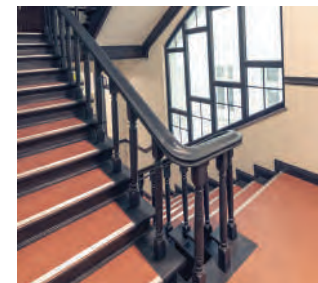
Baumit insulation

System: Baumit ProSystem

Baumit Materials:

MosaikTop, SilikonColor, RK 39, Multi MC 55 W, Stuccoco Mono, Stuccoco Grosso, Stuccoco Fine

Paderewskiego 1



Photos: ABR

Architect: Paul Sellner

Investor: Wspólnota Mieszkaniowa
Paderewskiego 1 Bydgoszcz

Constructor: Zakład Ogólnobudowlany
Dariusz Krzemkowski

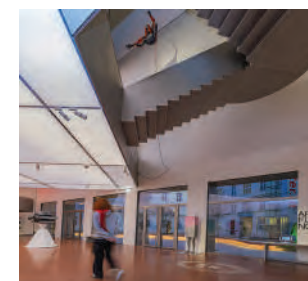
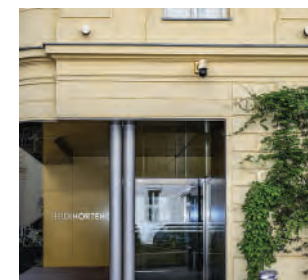
Location: Bydgoszcz, Poland

Built 1905-08 by architect Paul Sellner, the Berlin Art Nouveau-style tenement features an L-shaped structure, gable roof, historic dormers, and bay windows with onion-shaped cupolas. Its original appearance, based on archival documents, was faithfully recreated, including façade and stucco reconstruction, under conservator guidance.

Baumit Materials:

SilikonColor, Multi MC
55 W, Stuccoco Mono,
Stuccoco Guss, Stuccoco
Grosso, Stuccoco Fine

The Heidi Horten Collection



Architect: the next ENTERprise Architects
ZT GmbH Harnoncourt, Fuchs & Partner
Investor: Heidi Horten Collection
Constructor: Leyrer & Graf GmbH
Applicator: Hirsch Malerei und mehr
Location: Vienna, Austria

A complex of residential, administrative and stable buildings constructed in 1801-1805 for Archduke Friedrich was turned into a state-of-the-art museum of a famous art collection. On request of the builder the historic façade of the house had to remain preserved in order to create the romantic character of a small hidden palace in the courtyard of an old building complex.

Baumit Materials:
SilikonColor,
SanovaMonoTrass,
Sumpfkalk, NHL Pre,
NHL Manu, NHL Fine
MultiWhite

The Pea



Photos: Baunit/Christian Postl

Architect: pumar Pesendorfer und Machalek Architekten

Investor: Oberwarter Bau-, Wohn- und Siedlungsgenossenschaft

Applicator: Unideko GmbH

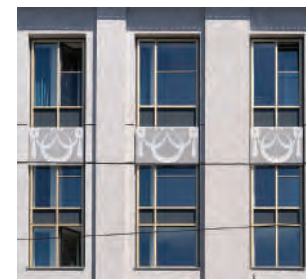
Location: Bruckneudorf, Austria

The historic former pea shelling factory built in 1896 – a fascinating industrial building in architectural culture – today is home to an elementary school and an event centre. By a sustainable remodeling the history of the building was transferred into a readable present in a fresh and friendly way.

Baunit Materials:

SpeziKalk, Sumpfkalk, NHL 3,5

Dorotheum & Motel One



Photos: pierer.net

Architect: Hohensinn Architektur
ZT GmbH
Investor: Motel One Group
Applicator: Narrath Putze GmbH
Location: Graz, Austria

Exhibition and auction rooms on the ground floor were redesigned and a contemporary use was achieved on the floors above with a design city hotel. During the course of the remodeling the appearance of the building was also radically changed – façades from the Sixties have been removed and classic façade divisions and ornamentation of the original English house from the turn of the century were uncovered and reinterpreted.

Baumit Materials:
CreativTop, Lasur,
StarContact,
ThermoExtra, Sanova S

Fuchsl Palace



Architect: PRO ARH SRL

Investor: Oradea Heritage - Fundatia de Protectie a Monumentelor

Constructor: Constructorul Salard SRL

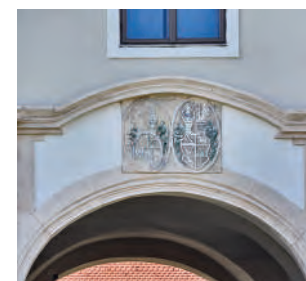
Location: Oradea, Romania

Füchsl Palace, Lechnerian style in Oradea, built 1902-1903 by architects Zoltán Bálint, Lajos Jámbo. Funded by Vilmos Rendes, owned by wine merchants Arnold, Mór Füchsl. Ground floor shops, upper floor apartments, hidden courtyards. Ornate façade with “TF” monograms, curvilinear hardware, unique style.

Baumit Materials:

SilikatTop, NHL Thermo, NHL Multi, NHL SuperFino

Teleki Castel



Architect: SC Utilitas CCPDRPC SRL
Investor: Complexul Muzeal Bistrita Nasaud
Constructor: SC EURAS SRL
Location: Posmus City, Bistrita Nasaud, Romania

Teleki Castle, built after 1746, features Teleki-Haller coat of arms and 1752 inscription. Posmuş building, a baroque-style residence, painted blue, with whitewashed corners. U-shaped layout reflects baroque castle design. Damaged in 1824 fire, rebuilt with turret in 1828. Statues flanked entrance until 1945. Abandoned post-1989 revolution.

Baumit Materials:
 SilikatColor, KlimaFino, KlimaColor, NHL Multi

Csello Cselley Mill



Architect: Smertnik Kraut ZT GmbH
Investor: Mario und Ulrike Müller
Applicator: Unideko GmbH
Location: Oslip, Austria

The Cselley Mill, dating back to 1515, features an eight-axis arcade and a distinctive dovescote. Renovated in compliance with monument protection guidelines, the historic mill now serves as an interdisciplinary cultural event center, attracting Austria's cultural scene to its picturesque Rust hills location.

Baumit Materials:
FeinKalk, TrassitPlus,
MPA 35 Speed

Dacia One



Architect: STUDIO 10 M
Investor: Victoriei Bussines Development
Constructor: KESZ Constructii Romania
Location: Romania

DACIA ONE, a mixed-use project in Bucharest, revitalizes the Dacia-Victoriei crossroads. It integrates the restored Casa Cesianu, a listed monument, with modern design. The polygonal glass façade reflects the old theater, while stone and glass blend modern and historical styles. The urban composition features a grid element reminiscent of Art Deco architecture, inviting exploration.

Baumit Materials:
MultiRenova, NHL Multi,
NHL Pre, MultiWhite

Cepari Church



Architect: SC ARHI BEAST SRL

Investor: Parohia Ortodoxa Romana
Cepari

Constructor: SC EURAS SRL

Location: Cepari, judetul Bistrita Nasaud,
Romania

The “Buna Vestire” church, dated back to the 15th century (first noted in 1407), initially Gothic in style, with preserved windows and frames. Stone-built and fortified, it was enlarged in 1893-1896 by architect Friedrich Weingartner.

Baumit Materials:

SilikatColor, NHL MP

High school Nikolaus Lenau



Investor: Primaria Timisoara
Constructor: Alex Dia Construct
Location: Timisoara, Romania

Established in 1870, "Nikolaus Lenau" high school in Timișoara occupies a building from 1761, originally a magistrate's house and theater. Renovated in 1878, it initially taught in German and is named after poet Nikolaus Lenau, from Banat's Lenauheim.

Baumit Materials:
SilikatColor, Sanova L

Officers' pavilion



Architect: JAKAB DESIGN STUDIO s.r.o.,
Komárno

Investor: Mesto Komárno

Constructor: Árpád Mézes, RENON s.r.o.,
Komárno

Location: Komárno, Slovakia

The majestic Officers Pavilion is one of the most beautiful cultural and historical monuments of the city. It was built in the mid-19th century in the English Neo-Gothic style and now houses various institutions and restaurants. Between the wings of the pavilion is an open-air courtyard.



Baumit Materials:
SilikonColor, Sanova S,
SanovaMonoTrass,
MultiRenova

Comenius University Faculty of Theology



Architect: Ing. Marta Píchová
Investor: Univerzita Komenského
 - Rímskokatolícka cyrilometodská
 bohoslovecká fakulta
Constructor: STAFIN PLUS, s.r.o.,
 Bratislava
Location: Bratislava, Slovakia

The late Renaissance building, in which priests were to be educated during the Counter-Reformation period, was built in 1628-1635. The school later became a place for the education of the Slovak intelligentsia, which started the national movement in the 19th century. Today it is the seat of the Roman Catholic Cyril and Methodius Divinity Faculty of Comenius University.

Baumit Materials:
 SilikonColor, Sanova S,
 MultiRenova

Town House



Architect: Mgr. arch. Lucia Marušicová,
Ing. Marta Píchová (autorka sanácie)

Investor: Obec Modra

Constructor: Želiar s.r.o.

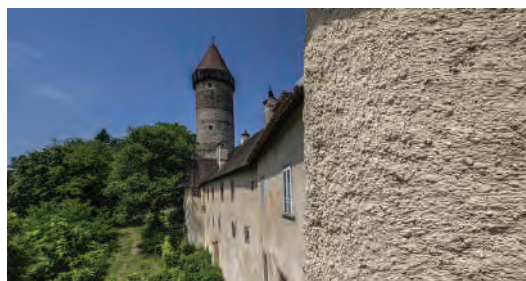
Location: Modra, Slovakia

The late Renaissance two-storey townhouse is located in a terraced development on an exposed part of the square. The house has an older core dating from the 16th century and has been modified in later stages. It has undergone various alterations throughout its existence and therefore the main task of restoration has been to remove inappropriate materials and repainting.

Baumit Materials:

SanovaColor, NHL Manu,
NHL Pre, NHL Fine

Castle Clam



Investor: Privat
Applicator: Bad Zeller Bau GmbH
Location: Klam, Austria

Burg Clam, dating back to 1142, hosts major cultural events. Managing the castle spans generations, requiring periodic renovations. The historic natural stone masonry façade and tower wing were recently restored using traditional craftsmanship methods.

Baumit Materials:
Sumpfkalk, NHL Pre, NHL Manu, NHL 3,5

Zwickau, police headquarters



Architect: CODE UNIQUE
Architekten GmbH

Investor: SIB Zwickau

Constructor: Leon-Restaurierung Flöha
GmbH

Location: Zwickau, Germany

Zwickau police HQ underwent major renovation, preserving heritage buildings while adding new office space. The project accommodates 500+ officers and includes labs, garages, and technical rooms. Historic main building retains its external appearance, with careful restoration of sgraffito plaster.

Baumit Materials:
SanovaColor, Classico
KRP Jura , Stuccoco
Guss, MPA 66 LL plus

Chocolaterie and café

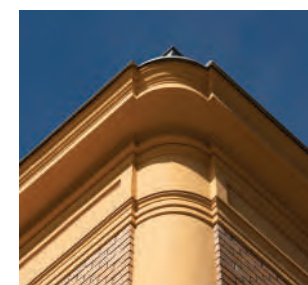
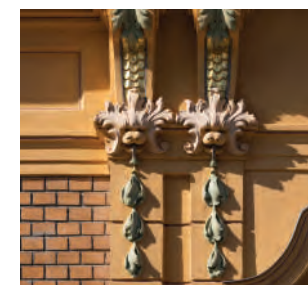


Investor: Peter Müller

Constructor: Heinz Haberland
Farbdesigner & Malermeister

Location: Schwabmünchen, Germany

Villa Brutscher (1896), now a café, underwent extensive renovation. Restored stucco, reconstructed architectural elements, and refurbished surfaces. Tradition emphasized, meeting heritage requirements. Close partnership with restorers formed, reflecting labor of love.



Baumit Materials:

*Fascina SEP, StarContact
Light, ProContact, MPA
35 Speed, Multi HM 50,
MPA Sockel 62 Speed*

Slavonski Brod Fortress



Architect: Orking d.o.o.

Investor: Grad Slavonski Brod, EU Fondovi

Constructor: Hidromont Slavonski Brod

Applicator: Hidromont Slavonski Brod

Location: Slavonski Brod, Croatia

Brod Fortress, a symbol of Slavonski Brod, underwent reconstruction using Baumit materials. Works included rehabilitating interior walls, reinforcing structure, and renovating façades and passageways.

Baumit Materials: NHL MP, Klinker, SanovaUni, NHL SicuroProtect

Manor House in Moravany



Architect: Ing.arch. Nikoleta Jančeková,
Bratislava

Constructor: High Tech construction
s. r. o., Bratislava

Location: Moravany nad Váhom, Slovakia

The manor house with medieval origins has a restored expression presenting its Renaissance appearance with Baroque modifications. The former residence of famous noble families became a meeting place for Slovak artists and architects in the 20th century. The current owner has restored the manor to its former glory and it is once again alive with art.

Baumit Materials:
SilikonColor, SilColor,
Sanova L, SanovaPutz L,
Sanova S, SanovaPutz
S, SanovaMonoTrass,
Sanova EinlagenTrassPutz

Life Colors: 0165



Baumit's Vision for 2030
Building Sustainably

GO2morrow

GO2morrow is sustainability at Baunit

GO2morrow represents the very essence of sustainability at Baunit. It transcends being a mere label for products crafted from recycled materials, resource conservation, or CO₂e reduction. Instead, it embodies an attitude and a powerful driving force all at once.

Attitude

GO2morrow is our attitude to think beyond generations.

Claim

It is our claim to shape the future positively.

Incentive

It is our incentive, as leading manufacturer of building materials in Europe, to show ecological, economic and social responsibility at all our locations in 24 countries.

“Sustainability succeeds when you can put a tick under three pillars: social, environmental and economic.”

CEO Baunit Group, Robert Schmid



Our G02morrow achievements by now



45
million m²



facade insulation

every year across Europe

**Saving 1 million
tons CO₂e / year**



1 m² of facade insulation
saves **24 kg of CO₂e per year**

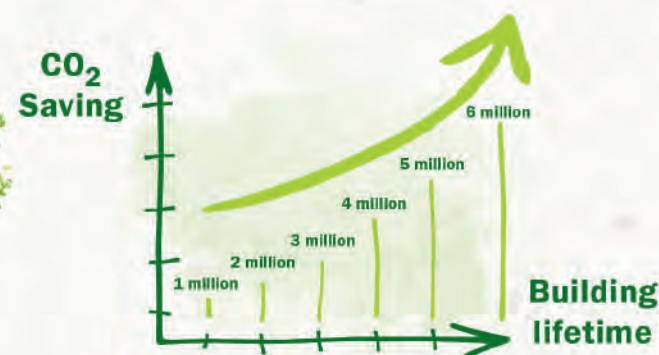


**Equals oxygen production
of 90 million trees
per year**



1 tree binds
12 kg CO₂ per year

CO₂e savings multiply



CO₂e savings multiply each year
over the entire lifetime of each
building we insulate.



Baumit insulation is applied on an impressive 45 million square meters to European facades. **Each square meter of insulation acts as a powerful environmental champion, saving a remarkable amount of CO₂e.** The carbon dioxide savings achieved by just one square meter of insulation equals the oxygen production of two trees over a year. However, the CO₂e savings don't end there; they multiply each year over the entire lifetime of each insulated building.

800 million tons CO₂e saved since the beginning of Baumit's ETICS success story

Making up for 10 million cars during the whole lifetime circle

The positive contributions of Baumit's facade insulation efforts have effectively counterbalanced the CO₂ emissions produced by approx. 10 million cars in their lifetime (15 years 5 to/year).

Saving totals of annual CO₂ emissions by Germany

This amount surpasses the total yearly CO₂ emissions of Germany, Europe's largest economies.

Skyrocketing savings like 300,000 trips to the moon

CO₂e savings through insulated facades by Baumit can be compared to the environmental impact of approximately 300,000 trips to the moon and back.





The most important GO2morrow goal by 2030



20%

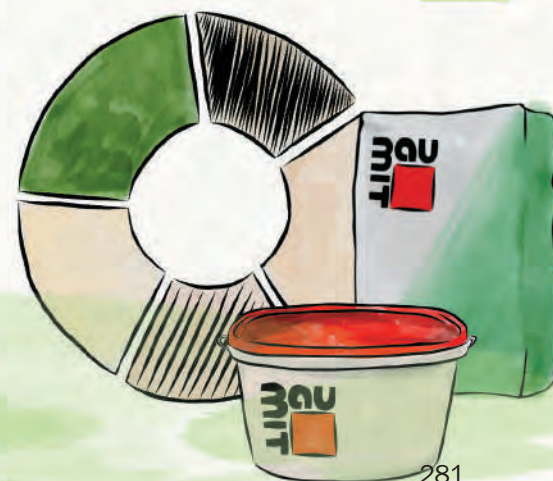
less CO₂e

Environmental

Our main focus goes to upgrading our product recipes and optimize them in order to reduce the amount of CO₂e.

We achieve this by continually adjusting our recipes, embracing environmentally friendly binder alternatives, and prioritizing the use of recycled packaging materials.

The constant reduction of the size of the Group's CO₂e-footprint is strictly monitored and compared to the estimated CO₂e-reduction per year.





less or green energy per ton of building materials produced

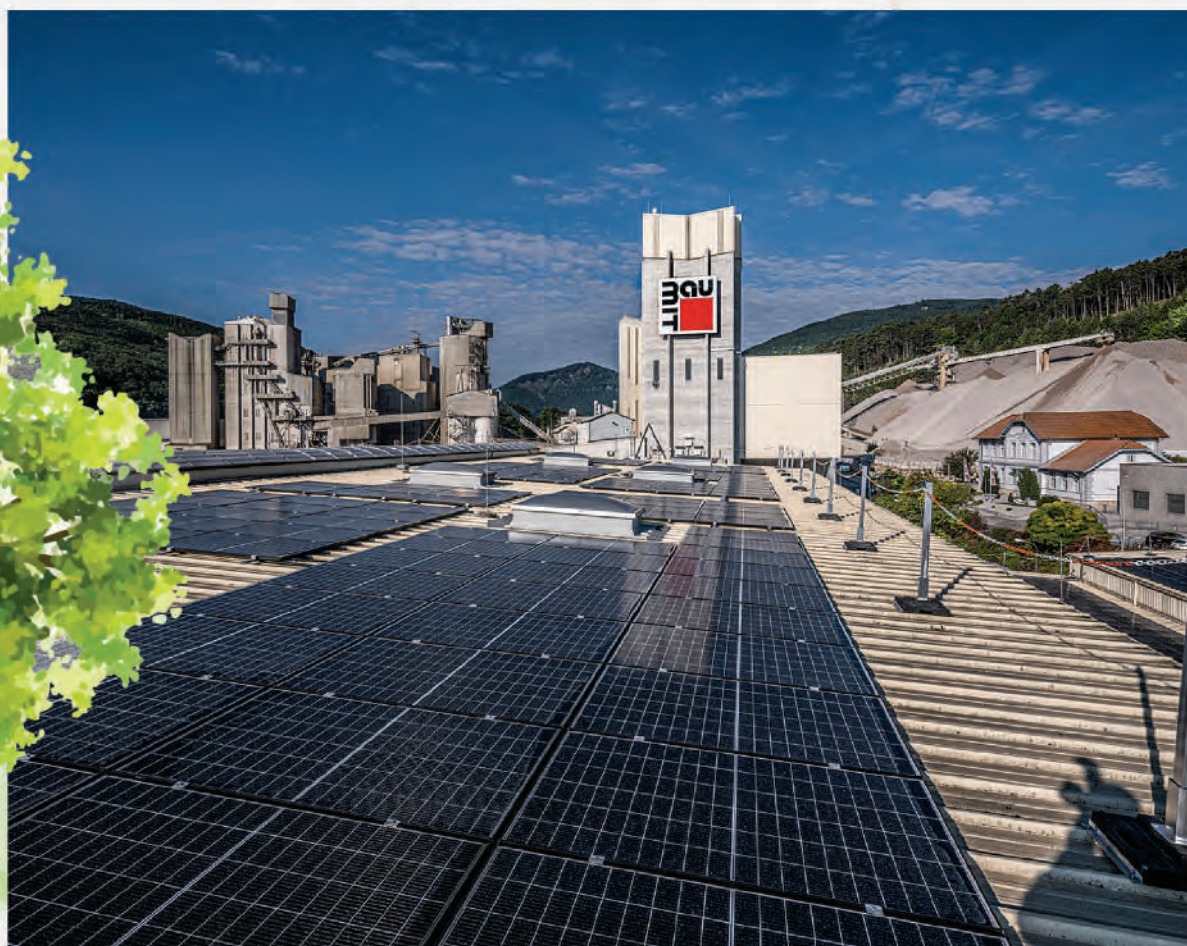
We have set an ambitious goal of **reducing energy** consumption or switching to green energy during product manufacture **by a remarkable 10%**. This means more than just a switch – it's an optimization of our entire power mix and drives real change.





Our efforts in **extending the reach of solar panels** across multiple company-related buildings throughout Europe are a testament to our dedication to embracing renewable energy sources. By harnessing the sun's power we take a significant step towards achieving our energy reduction goal.

To make a meaningful impact, we **use energy efficiently** and make use of the **best available technology** at every stage. With dedication, we carefully check and analyze energy usage during production, and evaluate areas of improvement to achieve the best possible .



GO2morrow



10%

circular economy throughout Baumit

With the development of GO2morrow recycling concrete made from 100% recycled aggregate, Baumit is leading the way as a pioneer. We kicked off a new era in which we roll out this pilot to more and more products. Our goal is to reach 10% recycled concrete. Crucial to achieving this goal is also the development of innovative technologies that helps us reach our circular economy goals.





Considering the separation of building materials by type already during their development is an important principle of the circular economy. Here, too, we set standards, such as with our focus on easier deconstruction. For example, StarTrack technology makes it possible for ETICS to be bonded rather than doweled. ETICS thus become a degradable building material. Another step is the initiated switch to buckets made of recycled material.

Environmental





Social goals to be achieved by 2030

People are the essence of Baunit. Our employees, our communities, our partners, and our customers. Together they define our ideology, drive our success, and shape our future. For this reason, we as Baunit have set ourselves three goals, which we want to achieve by joining forces.



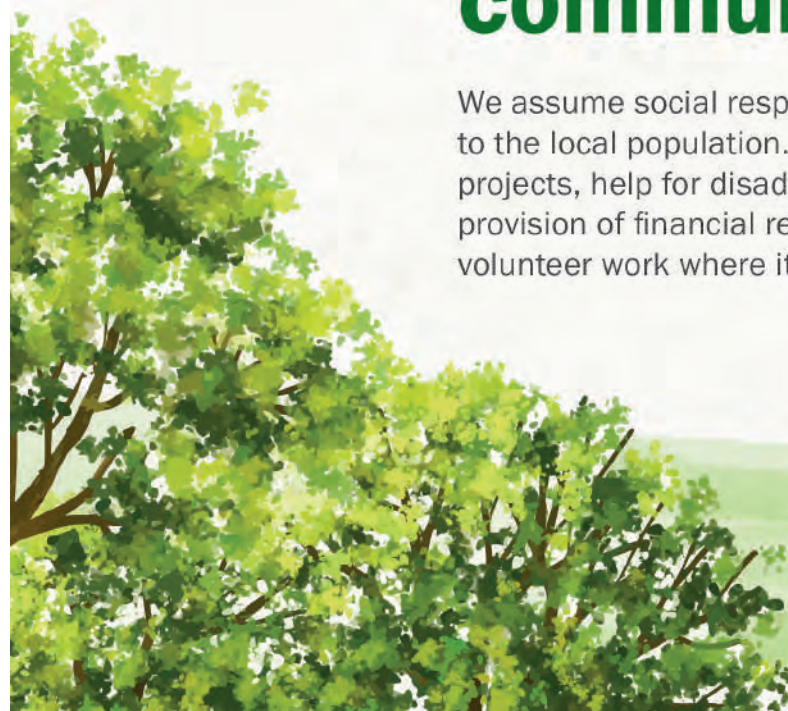
Equal opportunities for our workforce

We value the dedication and expertise of our employees, considering them the driving force behind our company's success. Our goal is to create an even more inclusive workplace that nurtures their personal and professional growth. We are committed to achieving a management team that is diverse and gender-balanced. Diversity is the key of our success. By embracing this alongside inclusion, and offering comprehensive training programs, we strive to enhance job satisfaction and foster a motivated workforce.

Support local communities

We assume social responsibility and make an important contribution to the local population. Whether it is support for selected social projects, help for disadvantaged people, local sponsoring, the provision of financial resources or Baumit building materials, or volunteer work where it is needed.

Social





Healthy workplace without accidents

With our Safety, Order and Sanitation guide (SOS) we make occupational safety a central issue; The „SOS guide“ improves the handling of work equipment and loads. Constant training courses are dedicated to the proper use of tools and materials. Our aim is to eliminate health hazards and accidents are also to be prevented by stepping up preventive occupational medicine.

Social



Economic goals to be achieved by 2030

Economic revolves around a conscientious approach to production. Circular economy, limiting waste and using renewable raw material show our commitment to energy efficiency and, at the same time, help us shift our budget towards future-oriented projects. What we do, we do for the long term.

“We are firm believers in thinking long-term, which is why sustainability is a natural fit for Baumit.”

CEO Baumit Group, Robert Schmid

Secure growth

As a privately owned company with strong values, we want to grow in the long term. Secure growth also guarantees the market leadership that we are striving for in all segments. Furthermore, long-term success secures jobs. Quality and prudence instead of quantity and rapid profit maximization have set the direction here since our company was founded.

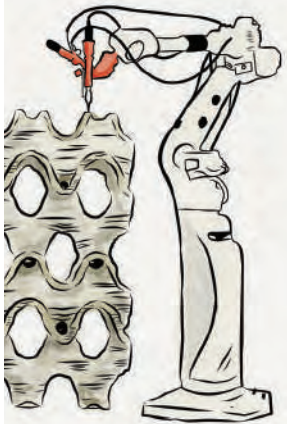




Saving raw materials and conserving nature

Good resource management starts with the responsible use of raw materials. With quarries in close proximity to our factories we are saving transport kilometers. Smart logistics help us optimize routes and shorten distances when needed. Turning used buildings into a valuable material for our products is a path that we at Baunit are aiming for.

An essential factor of functioning circular economy is also the extension of the life cycle of products. This conserves resources and reduces the need for recycling. By building with the Baunit 3D printer „BauMinator“ constructions save material and up to 30-50% of weight which results in CO₂e reduction up to 50%.



Regionalism in the supply chains



We are leading the way when it comes to selecting sustainable partners and suppliers according to high-quality standards. The decisive factor is not the lowest price, but regionalism, short distances and fair trading. The awareness of our responsibility for the entire life cycle of our products and services, a clear vision and consistent transparency make us fit for the future and competitive.

Economic





☒ Recycling



☒ Packaging

☒ Binders

☒ Logistics

☒ Success

☒ Photovoltaic



☒ Diversity

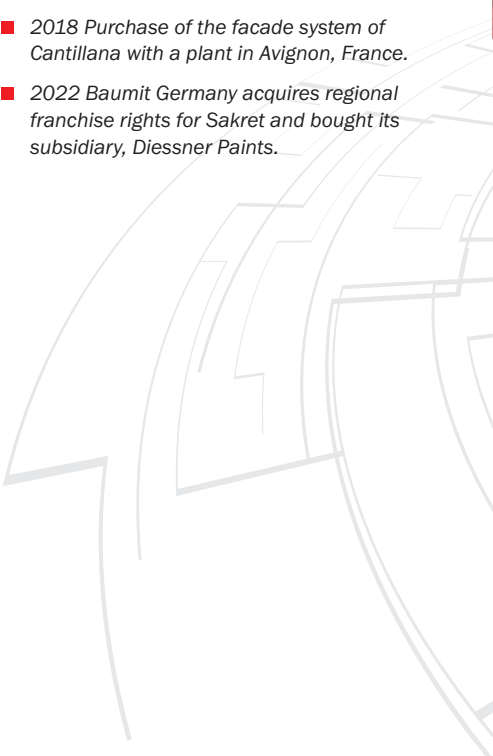


☒ Raw Material



Learn more about G02morrow
and our goals for 2030
Baumit.com/go2morrow

Baumit History

- 1988 KR Friedrich Schmid (Wopfinger) and Dieter Kern (Wietersdorfer&Peggauer) found “Baumit” building materials.
 - 1990 Baumit goes international: Start with the establishment of foreign subsidiaries.
 - 1999 Baumit develops “Baumit open”, the breathable thermal insulation system.
 - 2002 Commission of Europe’s largest wet plaster production in Wopfing.
 - 2005 Introduction of Baumit StarTrack – the revolution in facade technology.
 - 2006 Baumit develops Baumit Nanopor – the self cleaning facade.
 - 2007 Baumit launches the “Healthy Living” product range with Baumit Klima.
 - 2008 Robert Schmid takes over the management of Schmid Industrie Holding.
 - 2012 Baumit develops Europe’s most comprehensive colour system for facades – Baumit “Life” with 888 colours.
 - 2013 Introduction of Baumit CreativTop for individual and creative facade design.
 - 2014 First Baumit LifeChallenge takes place in Vienna.
 - 2017 Baumit (Wopfinger) acquires all subsidiaries from Wietersdorfer&Peggauer and becomes one big Baumit family.
 - 2018 Purchase of the facade system of Cantillana with a plant in Avignon, France.
 - 2022 Baumit Germany acquires regional franchise rights for Sakret and bought its subsidiary, Diessner Paints.
- 

LIFE
CHALLENGE
LJUBLJANA

